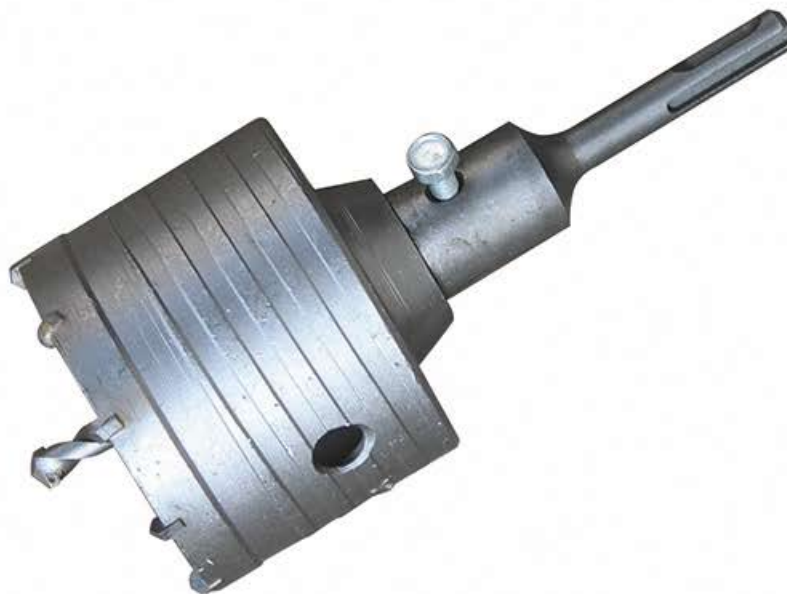


WALL HOLE SAW

CUTTING TOOLS

CUTTING TOOLS



HEX SHANK



SDS+ SHANK



SDS MAX SHANK



HEX SHANK MODE II



Specification of extension rod(mm)

22 × 110	22 × 400
22 × 125	22 × 430
22 × 140	22 × 450
22 × 160	22 × 500
22 × 200	22 × 530
22 × 220	22 × 600
22 × 250	22 × 700
22 × 280	22 × 800
22 × 300	22 × 1000
22 × 350	

Specification of keyhole saw(mm)

25 × 72 × 22 × 4	90 × 72 × 22 × 11
30 × 72 × 22 × 4	95 × 72 × 22 × 11
35 × 72 × 22 × 4	100 × 72 × 22 × 12
40 × 72 × 22 × 5	105 × 72 × 22 × 12
45 × 72 × 22 × 5	110 × 72 × 22 × 12
50 × 72 × 22 × 6	115 × 72 × 22 × 12
55 × 72 × 22 × 6	120 × 72 × 22 × 13
60 × 72 × 22 × 7	125 × 72 × 22 × 13
65 × 72 × 22 × 8	130 × 72 × 22 × 13
68 × 72 × 22 × 8	135 × 72 × 22 × 13
70 × 72 × 22 × 9	140 × 72 × 22 × 15
75 × 72 × 22 × 9	150 × 72 × 22 × 15
80 × 72 × 22 × 10	160 × 72 × 22 × 15
85 × 72 × 22 × 10	

HIGH-SPEED STEEL HOLE SAW



RADAR HOLE SAW



TCT HOLE SAW

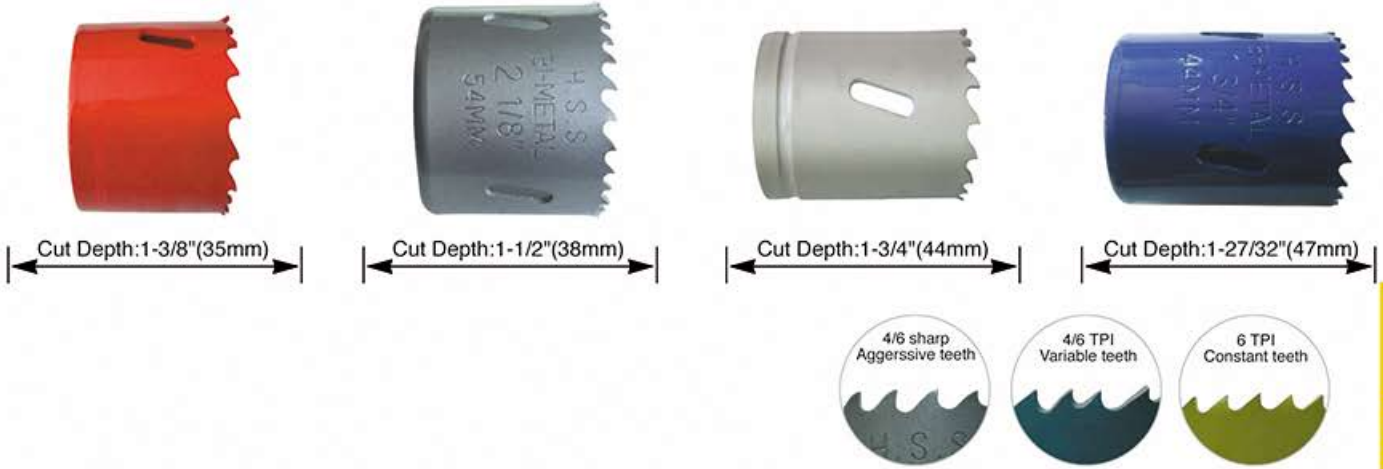


PACKAGING SHOW



Art No.	SIZE	
	INCHES	MM
EC02-0012	15/32"	12
EC02-0013	1/2"	13
EC02-0014	9/16"	14
EC02-0015	19/32"	15
EC02-0016	5/8"	16
EC02-0017	21/32"	17
EC02-0019	3/4"	19
EC02-0020	25/32"	20
EC02-0021	13/16"	21
EC02-0022	7/8"	22
EC02-0024	15/16"	24
EC02-0025	1"	25
EC02-0026	1-1/32"	26
EC02-0027	1-3/32"	27
EC02-0028	1-1/8"	28
EC02-0030	1-3/16"	30
EC02-0032	1-1/4"	32
EC02-0034	1-11/32"	34
EC02-0035	1-3/8"	35
EC02-0038	1-1/2"	38
EC02-0040	1-2/16"	40
EC02-0042	1-21/32"	42
EC02-0045	1-25/32"	45
EC02-0048	1-7/8"	48
EC02-0050	1-31/32"	50
EC02-0052	2-1/16"	52
EC02-0054	2-1/8"	54
EC02-0055	2-5/32"	55
EC02-0058	2-9/32"	58
EC02-0060	2-3/5"	60
EC02-0065	2-9/16"	65
EC02-0070	2-3/4"	70
EC02-0075	2-15/16"	75
EC02-0080	2-3/32"	80
EC02-0085	2-13/32"	85
EC02-0090	2-17/32"	90
EC02-0095	3-3/4"	95
EC02-0100	4"	100

BI-METAL HOLE SAW



CUTTING TOOLS

CUTTING TOOLS



Bi-Metal Hole Saws

1. M3/M42 HSS Bi-metal edge welded to alloy steel back for heavy duty cutting;
2. 4/6TPI variable teeth;4/6 sharp Aggerssive teeth;6 TPIConstant teeth
3. Cutting safely and efficiently, the best way to cut large holes, clearing the chips in touch materials;
4. Cutting depth to 1-3/8"(35mm);1-1/2"(38mm); 1-3/4"(44mm) and 1-27/32"(47mm).
5. Diameters from 9/16"(14mm) -- 9-27/32" (250mm);
6. Can be used in portable electric or pneumatic tools, vertical drill machines, lathe, Boring/Milling, Machines and Other Machine Tools;
7. Cuts Through Stainless Steel and Other Materials Pipe, Nail-Embedded wood, Hard Wood Floors, Plywood and Plastics;
8. All the specifications for arbored hole saws are the same as hole saws. There is an extra charge for the pilots on the arbored hole saws;



Shank: 3/8" (9.5mm)



Shank: 7/16" (11.1mm)

Bi-Metal Hole Saws Built-in Arbor

1. High Speed Steel M3 Bi-Metal Edge Welded to Alloy Steel Back for Heavy Duty Cutting.
2. Veriable Teeth 4/6 TPI Teeth
3. Cutting Safely and Efficiently, the Best Way to Cut Large Holes, Clearing the Chips in Touch Materials.
4. Cutting depth to 1-3/8"(35mm);1-1/2"(38mm); 1-3/4"(44mm) and 1-27/32"(47mm).
5. Diameters from 9/16"(14mm) -- 9-27/32"(250mm);
6. Can be Used in Portable Electric or Pneumatic Tools, Vertical Drill Machines, Lathe,Boring/ Milling Machines and Other Machine Tools.
7. Cuts Through Stainless Steel and Other Material Pipe, Nail-Embedded Wood, Hard Wood Floors, Plywood and Plastics.
8. All the specifications for arbored hole saws are the same as hole saws. There is an extra charge for the pilots on the arbored hole saws.

BI-METAL HOLE SAW

Please kindly note this packing information is only fit for cut depth 38mm(1-1/2")

Art No.	Diameter		N.T Wet(KG)	Unit meas (white box) (mm)	Q'ty/Carton	Size of carton (cm)
1014	14	9/16"	0.020	60×27×27	400	48×27×29
1016	16	5/8"	0.020	60×27×27	400	48×27×29
1017	17	11/16"	0.025	60×27×27	400	48×27×29
1019	19	3/4"	0.030	60×27×27	400	48×27×29
1020	20	25/32"	0.030	60×27×27	400	48×27×29
1021	21	13/16"	0.035	60×27×27	400	48×27×29
1022	22	7/8"	0.040	60×27×27	400	48×27×29
1024	24	15/16"	0.045	60×27×27	400	48×27×29
1025	25	1"	0.050	60×27×27	400	48×27×29
1027	27	1-1/16"	0.060	60×38×38	300	48×27×29
1029	29	1-1/8"	0.070	60×38×38	300	48×27×29
1030	30	1-3/16"	0.075	60×38×38	300	48×27×29
1032	32	1-1/4"	0.075	60×38×38	300	48×27×29
1033	33	1-5/16"	0.080	60×38×38	300	48×27×29
1035	35	1-3/8"	0.090	60×38×38	300	48×27×29
1037	37	1-7/16"	0.060	60×52×52	160	48×27×29
1038	38	1-1/2"	0.065	60×52×52	160	48×27×29
1040	40	1-9/16"	0.070	60×52×52	160	48×27×29
1041	41	1-5/8"	0.075	60×52×52	160	48×27×29
1043	43	1-11/16"	0.080	60×52×52	160	48×27×29
1044	44	1-3/4"	0.085	60×52×52	160	48×27×29
1046	46	1-13/16"	0.090	60×52×52	160	48×27×29
1048	48	1-7/8"	0.100	60×62×50	160	48×27×29
1051	51	2"	0.110	60×62×50	140	48×27×29
1052	52	2-1/16"	0.115	60×62×50	140	48×27×29
1054	54	2-1/8"	0.125	60×62×50	140	48×27×29
1057	57	2-1/4"	0.140	60×62×50	140	48×27×29
1059	59	2-5/16"	0.150	73×50×73	100	48×27×29
1060	60	2-3/8"	0.155	73×50×73	100	48×27×29
1064	64	2-1/2"	0.170	73×50×73	100	48×27×29
1065	65	2-9/16"	0.180	73×50×73	100	48×27×29
1067	67	2-5/8"	0.190	73×50×73	100	48×27×29
1068	68	2-11/16"	0.195	73×50×73	100	48×27×29
1070	70	2-3/4"	0.200	73×50×73	100	48×27×29
1073	73	2-7/8"	0.225	84×50×84	75	48×27×29
1076	76	3"	0.230	84×50×84	75	48×27×29
1079	79	3-1/8"	0.260	84×50×84	75	48×27×29
1083	83	3-1/4"	0.280	98×50×98	50	48×27×29
1086	86	3-3/8"	0.310	98×50×98	50	48×27×29
1089	89	3-1/2"	0.310	98×50×98	50	48×27×29
1092	92	3-5/8"	0.335	98×50×98	50	48×27×29
1095	95	3-3/4"	0.345	98×50×98	50	48×27×29
1098	98	3-7/8"	0.365	128×50×128	36	48×27×29
1102	102	4"	0.410	128×50×128	36	48×27×29
1105	105	4-1/8"	0.410	128×50×128	36	48×27×29
1108	108	4-1/4"	0.430	128×50×128	36	48×27×29
1111	111	4-3/8"	0.450	128×50×128	36	48×27×29
1114	114	4-1/2"	0.480	128×50×128	36	48×27×29
1121	121	4-3/4"	0.560	128×50×128	36	48×27×29
1127	127	5"	0.610	143×50×143	20	48×27×29
1133	133	5-1/4"	0.650	143×50×143	20	48×27×29
1140	140	5-1/2"	0.700	143×50×143	20	48×27×29
1146	146	5-3/4"	0.750	160×50×160	15	48×27×29
1152	152	6"	0.820	160×50×160	15	48×27×29
1160	160	6-19/64"	1.000	180×50×180	15	48×27×29
1165	165	6-1/2"	1.050	180×50×180	15	48×27×29
1168	168	6-5/8"	1.100	180×50×180	15	48×27×29
1177	177	6-31/32"	1.200	180×50×180	15	48×27×29
1200	200	7-7/8"	1.400	215×50×215	10	48×27×29
1210	210	8-17/64"	1.550	215×50×215	10	48×27×29
1220	220	8-43/64"	1.700	255×50×255	10	48×27×29
1225	225	8-55/64"	1.800	255×50×255	10	48×27×29
1250	250	9-27/32"	1.900	255×50×255	10	48×27×29

ARBORS FOR BI-METAL HOLE SAWS

Pictures	Art No.	Shank Size	Thread Size	Fit Holesaw
	3001	1/4 Round	1/2"-20 UNF	14-30mm($\frac{7}{16}$ "- $1\frac{1}{16}$ ")
	3001A	1/4 Hex	1/2"-20 UNF	14-30mm($\frac{7}{16}$ "- $1\frac{1}{16}$ ")
	3001B	1/4 Quick Change Hex	1/2"-20 UNF	14-30mm($\frac{7}{16}$ "- $1\frac{1}{16}$ ")
	3002	3/8 Hex	1/2"-20 UNF	14-30mm($\frac{7}{16}$ "- $1\frac{1}{16}$ ")
	3003	7/16 Hex	1/2"-20 UNF	14-30mm($\frac{7}{16}$ "- $1\frac{1}{16}$ ")
	3004	7/16 Hex	1/2"-20 UNF	14-30mm($\frac{7}{16}$ "- $1\frac{1}{16}$ ")
	3005	7/16 Hex	5/8"-18 UNF	32-60mm($1\frac{1}{4}$ "- $2\frac{7}{8}$ ")
	3006	7/16 Hex	5/8"-18 UNF	32-250mm($1\frac{1}{4}$ "- $9\frac{7}{32}$ ")
	3007	3/8 Hex	5/8"-18 UNF	32-250mm($1\frac{1}{4}$ "- $9\frac{7}{32}$ ")
	3008	7/16 Hex	5/8"-18 UNF	32-250mm($1\frac{1}{4}$ "- $9\frac{7}{32}$ ")
	3008A	7/16 Quick chang Hex	5/8"-18 UNF	32-250mm($1\frac{1}{4}$ "- $9\frac{7}{32}$ ")
	3008B	7/16 Quick-Push	5/8"-18 UNF	32-250mm($1\frac{1}{4}$ "- $9\frac{7}{32}$ ")
	3009	5/8 Hex	5/8"-18 UNF	32-250mm($1\frac{1}{4}$ "- $9\frac{7}{32}$ ")
	3010	SDS Plus	1/2"-20 UNF	14-30mm($\frac{7}{16}$ "- $1\frac{1}{16}$ ")
	3011	SDS Plus	5/8"-18 UNF	32-250mm($1\frac{1}{4}$ "- $9\frac{7}{32}$ ")

ACCESSORIES FOR BI-METAL HOLE SAWS

Pictures	Art No.	Description
	4001	Adapters arbors with 1/2"-20UNF thread to fit holesaws 5/8-18 UNF thread
	4002	5-1/2"(140mm)Extension For shank of 7/16"(or 3/8")arbors
	4003	10"(250mm)Extension for shank of 7/16"(or 3/8")arbors
	4004	12"(300mm)Extension for shank of 7/16"(or 3/8")arbors
	4005	18"(450mm)Extension For shank of 7/16"(or 3/8")arbors
	4006	Ejector Spring, fits all 1/4" pilot drills
	4007	3" x 1/4"(76mm x 6.35mm) pilot drills
	4008	4-1/8" x 1/4"(105mm x 6.35mm) pilot drills
	4009	Hex key Wrench
	4010	Hole saws drive plate for 2-5/8" to 6"(67mm-152mm)
	4011	Hole saws drive plate for 4-1/8" to 9-27/32"(105mm-250mm)

BI-METAL HOLE SAW SET

6PCS HOLE SAWS SET

ITEM.NO.: 5001
 4PC Hole Saws: 2-1/2" (64mm), 3" (76mm), 3-1/2" (89mm), 4" (102mm)
 1PC Arbor: 7/16" Hex, Fit 32 - 210mm,
 1PC Pilot Drill: 1/4" x 76mm

Packing:
 Q'TY: 10sets/carton
 MEAS: 41.5 x 25.5 x 33.5cm
 GW/NW: 21/20kgs



7PCS HOLE SAWS SET

ITEM.NO.: 5002
 5PC Hole Saws: 7/8" (22mm), 1" (25mm), 1-1/8" (29mm), 1-1/4" (32mm),
 1-1/2" (38mm)
 1PC Arbor: 3/8" Hex, Fit 14 - 30mm
 1PC Adapter: 1/2-20UNF - 5/8-18UNF

Packing:
 Q'TY: 10sets/carton
 MEAS: 41.5 x 25.5 x 33.5cm
 GW/NW: 11/10kgs



7PCS HOLE SAWS SET

ITEM.NO.: 5003
 5PC Hole Saws: 3/4" (19mm), 7/8" (22mm), 1" (25mm),
 1-1/8" (29mm), 1-1/4" (32mm)
 1PC Arbor: 3/8" Hex, Fit 14 - 30mm
 1PC Adapter: 1/2-20UNF - 5/8-18UNF

Packing:
 Q'TY: 10sets/carton
 MEAS: 41.5 x 25.5 x 33.5cm
 GW/NW: 10/9kgs



7PCS HOLE SAWS SET

ITEM.NO.: 5004
 4PC Hole Saws: 3/4" (19mm), 7/8" (22mm), 1-1/8" (29mm), 1-3/8" (35mm)
 1PC Arbors: 3/8" Hex, Fit 14 - 30mm
 1PC Pilot Drill: 1/4" x 76mm
 1PC Adapter: 1/2-20UNF - 5/8-18UNF

Packing:
 Q'TY: 10sets/carton
 MEAS: 41.5 x 25.5 x 33.5cm
 GW/NW: 11/10kgs



* Other set are available.

BI-METAL HOLE SAW SET

CUTTING TOOLS

CUTTING TOOLS



9PCS HOLE SAWS SET

ITEM.NO.: 5005
6PC Hole Saws: 5/8" (16mm), 25/32" (20mm), 1" (25mm), 1-1/4" (32mm),
1-9/16" (40mm), 2" (51mm)
2PC Arbors: 3/8" Hex, Fit 14 - 30mm; 7/16"Hex, Fit 32 - 210mm
1PC Adapter: 1/2-20UNF - 5/8-18UNF

Packing:
Q'TY: 10sets/carton
MEAS: 41.5 x 25.5 x 33.5cm
GW/NW: 12.5/11.5kgs



Electrician



9PCS HOLE SAWS SET

ITEM.NO.: 5006
6PC Hole Saws: 3/4" (19mm), 7/8" (22mm), 1-1/8" (29mm), 1-1/2" (38mm),
1-3/4" (44mm), 2-1/4" (57mm)
2PC Arbors: 3/8" Hex, Fit 14 - 30mm; 7/16"Hex, Fit 32 - 210mm
1PC Adapter: 1/2-20UNF - 5/8-18UNF

Packing:
Q'TY: 10sets/carton
MEAS: 41.5 x 25.5 x 33.5cm
GW/NW: 13/12kgs



Maintenance



9PCS HOLE SAWS SET

ITEM.NO.: 5007
6PC Hole Saws: 7/8" (22mm), 1-1/8" (29mm), 1-3/8" (35mm), 1-3/4" (44mm),
2" (51mm), 2-1/2" (64mm)
2PC Arbors: 3/8" Hex, Fit 14 - 30mm; 7/16"Hex, Fit 32 - 210mm
1PC Adapter: 1/2-20UNF - 5/8-18UNF

Packing:
Q'TY: 10sets/carton
MEAS: 41.5 x 25.5 x 33.5cm
GW/NW: 14.5/13.5kgs



Industrial



9PCS HOLE SAWS SET

ITEM.NO.: 5008
6PC Hole Saws: 3/4" (19mm), 7/8" (22mm), 1-1/8" (29mm), 1-1/2" (38mm),
1-3/4" (44mm), 2-11/16" (68mm)
2PC Arbors: 3/8" Hex, Fit 14 - 30mm; 7/16"Hex, Fit 32 - 210mm
1PC Adapter: 1/2-20UNF - 5/8-18UNF

Packing:
Q'TY: 10sets/carton
MEAS: 41.5 x 25.5 x 33.5cm
GW/NW: 11/10kgs



Plumber

* Other set are available.

BI-METAL HOLE SAW SET

9PCS HOLE SAWS SET

ITEM.NO.: 5009

6PC Hole Saws: 1-1/4" (32mm), 1-1/2" (38mm), 1-3/4" (44mm),
2-1/4" (57mm), 2-3/8" (60mm), 2-11/16" (68mm)

2PC Arbors: 3/8" Hex, Fit 14 - 30mm; 7/16"Hex, Fit 32 - 210mm

1PC Adapter: 1/2-20UNF - 5/8-18UNF

Packing:

Q'TY: 10sets/carton

MEAS: 41.5 x 25.5 x 33.5cm

GW/NW: 16/15kgs



Journeyman



13PCS HOLE SAWS SET

ITEM.NO.: 5010

9PC Hole Saws: 3/4" (19mm), 7/8" (22mm), 1-1/8" (29mm), 1-3/8" (35mm),
1-1/2" (38mm), 1-3/4" (44mm), 2" (51mm), 2-1/4" (57mm),
2-1/2" (64mm)

2PC Arbors: 3/8" Hex, Fit 14 - 30mm; 7/16"Hex, Fit 32 - 210mm

1PC Pilot Drill: 1/4" x 76mm

1PC Adapter: 1/2-20UNF - 5/8-18UNF

Packing:

Q'TY: 10sets/carton

MEAS: 41.5 x 25.5 x 33.5cm

GW/NW: 18/17kgs



Industrial



14PCS HOLE SAWS SET

ITEM.NO.: 5011

11PC Hole Saws: 3/4" (19mm), 7/8" (22mm), 1" (25mm), 1-1/8" (29mm),
1-1/4" (32mm), 1-3/8" (35mm), 1-1/2" (38mm), 1-3/4" (44mm),
2" (51mm), 2-1/4" (57mm), 2-1/2" (64mm)

2PC Arbors: 3/8" Hex, Fit 14 - 30mm; 7/16"Hex, Fit 32 - 210mm

1PC Adapter: 1/2-20UNF - 5/8-18UNF

Packing:

Q'TY: 10sets/carton

MEAS: 41.5 x 25.5 x 33.5cm

GW/NW: 17/16kgs



Plumber



14PCS HOLE SAWS SET

ITEM.NO.: 5012

11PC Hole Saws: 3/4" (19mm), 7/8" (22mm), 1" (25mm), 1-1/4" (32mm),
1-3/8" (35mm), 1-1/2" (38mm), 1-3/4" (44mm), 2" (51mm),
2-1/4" (57mm), 2-1/2" (64mm), 3" (76mm)

2PC Arbors: 3/8" Hex, Fit 14 - 30mm; 7/16"Hex, Fit 32 - 210mm

1PC Adapter: 1/2-20UNF - 5/8-18UNF

Packing:

Q'TY: 10sets/carton

MEAS: 41.5 x 25.5 x 33.5cm

GW/NW: 21/20kgs



Maintenance



* Other set are available.

WOOD HOLE SAW

CUTTING TOOLS



CUTTING TOOLS



WOOD HOLE SAW SET

For cutting woods, plastics and composite materials up to 3/4" thick. Teeth are precision sharpened to produce smooth cuts. Constructed of hardened and tempered alloy steel for longer life.



Art No.	Diameter	
10401019	3/4"	19mm
10401022	7/8"	22mm
10401025	1"	25mm
10401028	1-1/8"	28mm
10401032	1-1/4"	32mm
10401035	1-3/8"	35mm
10401038	1-1/2"	38mm
10401041	1-5/8"	41mm
10401044	1-3/4"	44mm
10401048	1-7/8"	48mm
10401051	2"	51mm
10401054	2-1/8"	54mm
10401057	1-1/4"	57mm
10401060	1-3/8"	60mm

Art No.	Diameter	
10401064	2-1/2"	64mm
10401067	2-5/8"	67mm
10401070	2-3/4"	70mm
10401073	2-7/8"	73mm
10401076	3"	76mm
10401080	3-1/8"	80mm
10401082	3-1/4"	82mm
10401089	3-1/2"	89mm
10401092	3-5/8"	92mm
10401095	3-3/4"	95mm
10401002	4"	102mm
10401115	4-1/2"	115mm
10401127	5"	127mm

CUTTING TOOLS

CUTTING TOOLS



3PCS LOCK INSTALLATION KIT

ITEM.NO.:10402001
 SIZE:2-1/8"(54mm)
 Flat drill:22-1PC
 Large triangle:1PC

Packing:
 NW/GW:16/18KGS
 Q'TY:100 SETS/CTN
 MEAS:46.5 x 36.5 x 45.5CM



3PCS LOCK INSTALLATION KIT

ITEM.NO.:10402002
 SIZE:2-1/8"(54mm)
 Flat drill:22-1PC
 Large triangle:1PC

Packing:
 NW/GW:18/19KGS
 Q'TY:100 SETS/CTN
 MEAS:56.5 x 38 x 43.5CM



5PCS HOLE SAW SET

ITEM.NO.:10402003
 SIZE:1-1/4"(32mm), 1-1/2"(38mm), 1-3/4"(44mm), 2-1/8"(54mm),
 Large triangle:1PC

Packing:
 NW/GW:16/17KGS
 Q'TY:60 SETS/CTN
 MEAS:46 x 46 x 34CM

* Other set are available.

WOOD HOLE SAW SET

5PCS CONTRACTER HOLE SAW SET

ITEM.NO.:10402004
 SIZE:1-1/4"(32mm),1-1/2"(38mm),
 1-3/4"(44mm),2-1/8"(54mm),
 Large triangle:1PC
 Inner hex key arber:1PC

Packing:
 NW/GW:18/19KGS
 Q'TY:100 SETS/CTN
 MEAS:56.5 x 38 x 43.5CM



8PCS HOLE SAW SET

ITEM.NO.:10402005
 SIZE:2-1/2"(64mm),3"(76mm),
 3-3/2"(89mm),4"(102mm),5"(127mm),
 Large triangle:1PC
 Enhance mat slice:1PC
 Inner hex key arber:1PC

Packing:
 NW/GW:20/19KGS
 Q'TY:30 SETS/CTN
 MEAS:47 x 40.5 x 23CM



9PCS CONTRACTER HOLE SAW SET

ITEM.NO.:10402006
 SIZE:2"(51mm),2-3/8"(60mm),2-1/2"(64mm),2-7/8"(72mm),
 3"(76mm),3-3/8"(86mm),
 Large triangle:1PC
 Inner hex key arber:1PC
 Enhance mat slice:1PC

Packing:
 NW/GW:20/21KGS
 Q'TY:40 SETS/CTN
 MEAS:46.5 x 24 x 64CM



11PCS HOLE SAW SET

ITEM.NO.:10402007
 SIZE:3/4"(19mm),7/8"(22mm),1"(25mm),
 1-1/8"(29mm),1-1/2"(38mm),1-3/4"(44mm),
 2"(51mm),2-1/2"(64mm),
 Large triangle:1PC
 Small triangel:1PC
 Inner hex key arber:1PC

Packing:
 NW/GW:17/18KGS
 Q'TY:40 SETS/CTN
 MEAS:43 x 39.5 x 24.5CM



* Other set are available.

WOOD HOLE SAW SET

CUTTING TOOLS

CUTTING TOOLS



7PCS 1" OPENING HOLE SAW SET

ITEM.NO.:10402016
 SIZE:63",60",56",45",38",32",26",

Packing:
 NW/GW:16/17KGS
 Q'TY:100 SETS/CTN
 MEAS:49 x 30.5 x 49CM



7PCS 2" OPENING HOLE SAW SET

ITEM.NO.:10402017
 SIZE:63",60",56",45",38",32",26",

Packing:
 NW/GW:18/19KGS
 Q'TY:100 SETS/CTN
 MEAS:48.5 x 36 x 46.5CM



CARBIDE ADJUS TABLE CIRCLE HOLE CUTTER

ITEM.NO.:10402018
 SIZE:40-180mm

Packing:
 NW/GW:10/11KGS
 Q'TY:20 SETS/CTN
 MEAS:43 x 27 x 26CM



ADJUSTABLE HOLE SAW FOR ENAMEL TILE WITH CARD PACKING

ITEM.NO.:10402019
 SIZE:30-120mm

Packing:
 NW/GW:20/21KGS
 Q'TY:60 SETS/CTN
 MEAS:43 x 36 x 32CM

* Other set are available.