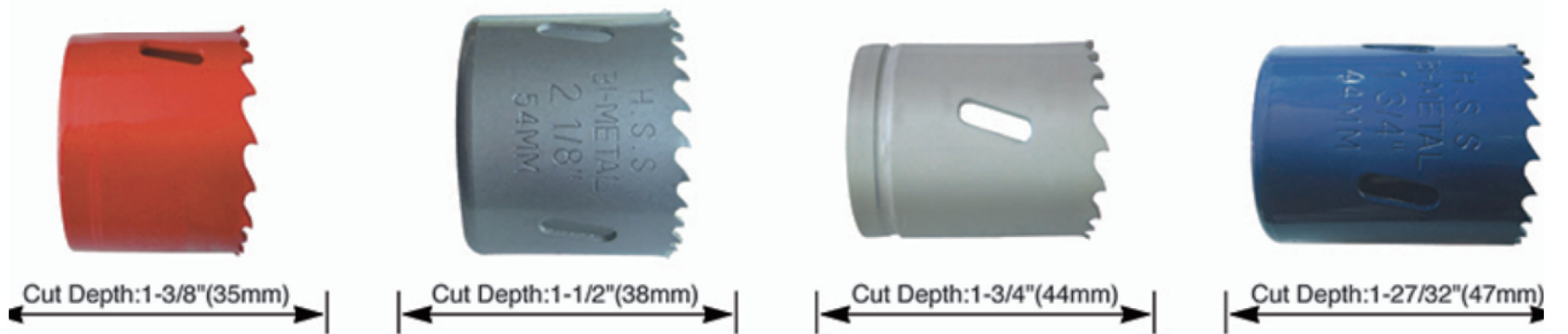
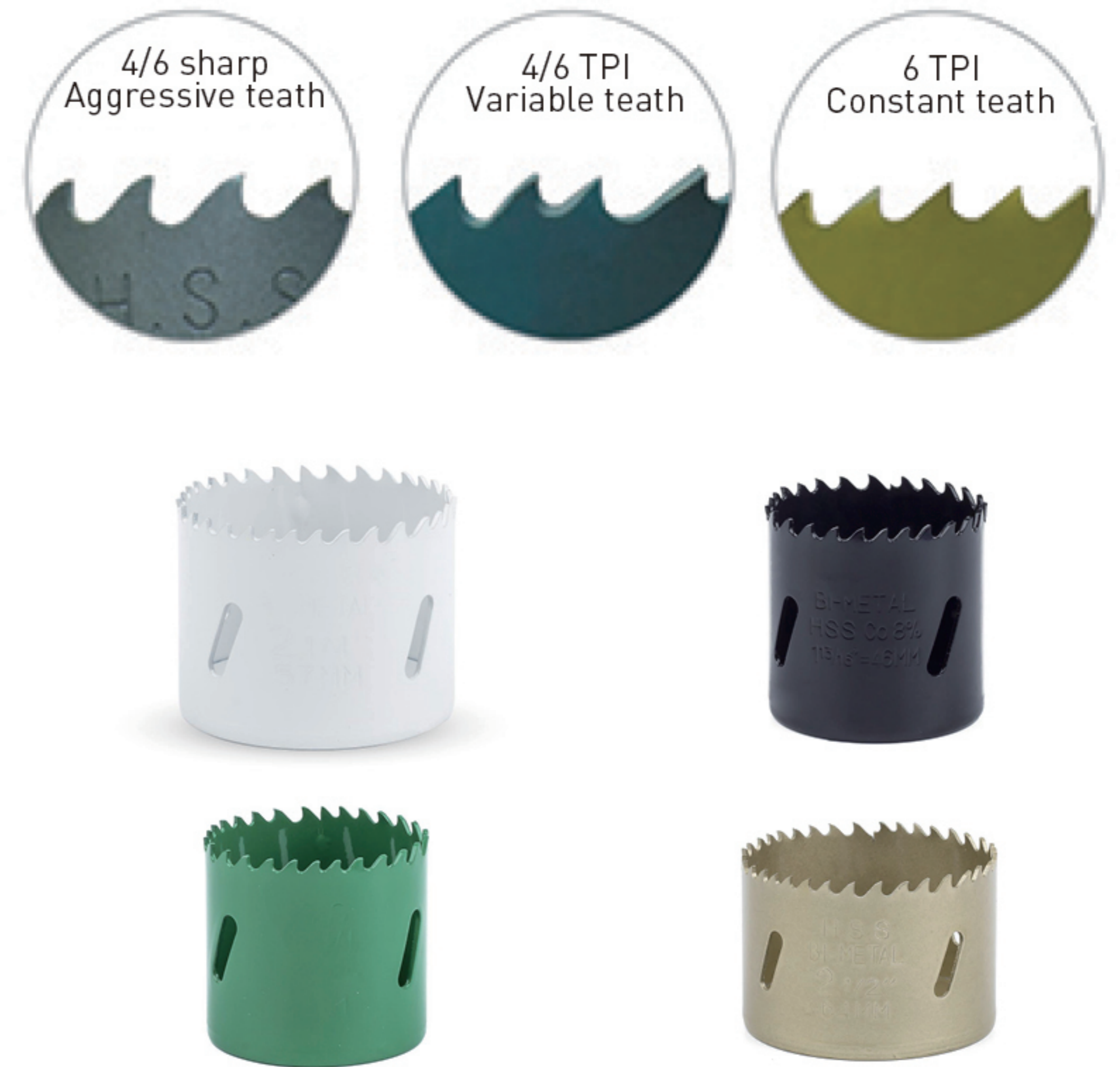


BI-METAL HOLE SAW



BI-METAL HOLE SAWS

1. M3/M42 HSS Bi-metal edge welded to alloy steel back for heavy duty cutting;
2. 4/6TPI variable teeth: 4/6 sharp Aggressive teeth; 6 TPI Constant teeth
3. Cutting safely and efficiently, the best way to cut large holes, clearing the chips in tough materials;
4. Cutting depth to 1-3/8" (35mm): 1-1/2" (38mm): 1-3/4" (44mm) and 1-27/32" (47mm).
5. Diameters from 9/16" (14mm) -- 9-27/32" (250mm);
6. Can be used in portable electric or pneumatic tools, vertical drill machines, lathe, Boring/Milling, Machines and Other Machine Tools;
7. Cuts Through Stainless Steel and Other Materials Pipe, Nail-Embedded wood, Hard Wood Floors, Plywood and Plastics;
8. All the specifications for arbored hole saws are the same as hole saws. There is an extra charge for the pilots on the arbored hole saws:



Size		Size		Size		Size		Size	
MM	Inch	MM	Inch	MM	Inch	MM	Inch	MM	Inch
14	9/16"	37	1-7/16"	65	2-9/16"	108	4-1/4"	220	8-43/64"
16	5/8"	38	1-1/2"	67	2-5/8"	111	4-3/8"	225	8-55/64"
17	11/16"	40	1-9/16"	68	2-11/16"	114	4-1/2"	250	9-27/32"
19	3/4"	41	1-5/8"	70	2-3/4"	121	4-3/4"		
20	25/32"	43	1-11/16"	73	2-7/8"	127	5"		
21	13/16"	44	1-3/4"	76	3"	133	5-1/4"		
22	7/8"	46	1-13/16"	79	3-1/8"	140	5-1/2"		
24	15/16"	48	1-7/8"	83	3-1/4"	146	5-3/4"		
25	1"	51	2"	86	3-3/8"	152	6"		
27	1-1/16"	52	2-1/16"	89	3-1/2"	160	6-19/64"		
29	1-1/8"	54	2-1/8"	92	3-5/8"	165	6-1/2"		
30	1-3/16"	57	2-1/4"	95	3-3/4"	168	6-5/8"		
32	1-1/4"	59	2-5/16"	98	3-7/8"	177	6-31/32"		
33	1-5/16"	60	2-3/8"	102	4"	200	7-7/8"		
35	1-3/8"	64	2-1/2"	105	4-1/8"	210	8-17/64"		

BI-METAL HOLE SAWS BUILT-IN ARBOR



BI-METAL HOLE SAWS SET



ARBORS FOR BI-METAL HOLE SAW

	Art No.	Shank Size	Thread Size	Fit Holesaw
	3001	1/4 Round	1/2"-20 UNF	14-30mm
	3001A	1/4 Hex	1/2"-20 UNF	14-30mm
	3001B	1/4 Quick Change Hex	1/2"-20 UNF	14-30mm
	3002	3/8 Hex	1/2"-20 UNF	14-30mm
	3003	7/16 Hex	1/2"-20 UNF	14-30mm
	3004	7/16 Hex	1/2"-20 UNF	14-30mm
	3005	7/16 Hex	5/8"-18 UNF	32-60mm
	3006	7/16 Hex	5/8"-18 UNF	32-250mm
	3007	3/8 Hex	5/8"-18 UNF	32-250mm
	3008	7/16 Hex	5/8"-18 UNF	32-250mm
	3008A	7/16 Quick chang Hex	5/8"-18 UNF	32-250mm
	3008B	7/16 Quick-Push	5/8"-18 UNF	32-250mm
	3009	5/8 Hex	5/8"-18 UNF	32-250mm
	3010	SDS Plus	1/2"-20 UNF	14-30mm
	3011	SDS Plus	5/8"-18 UNF	32-250mm

WOOD HOLE SAW



© BLACK OXID



© ELECTRICAL
DEPOSITION FINISH

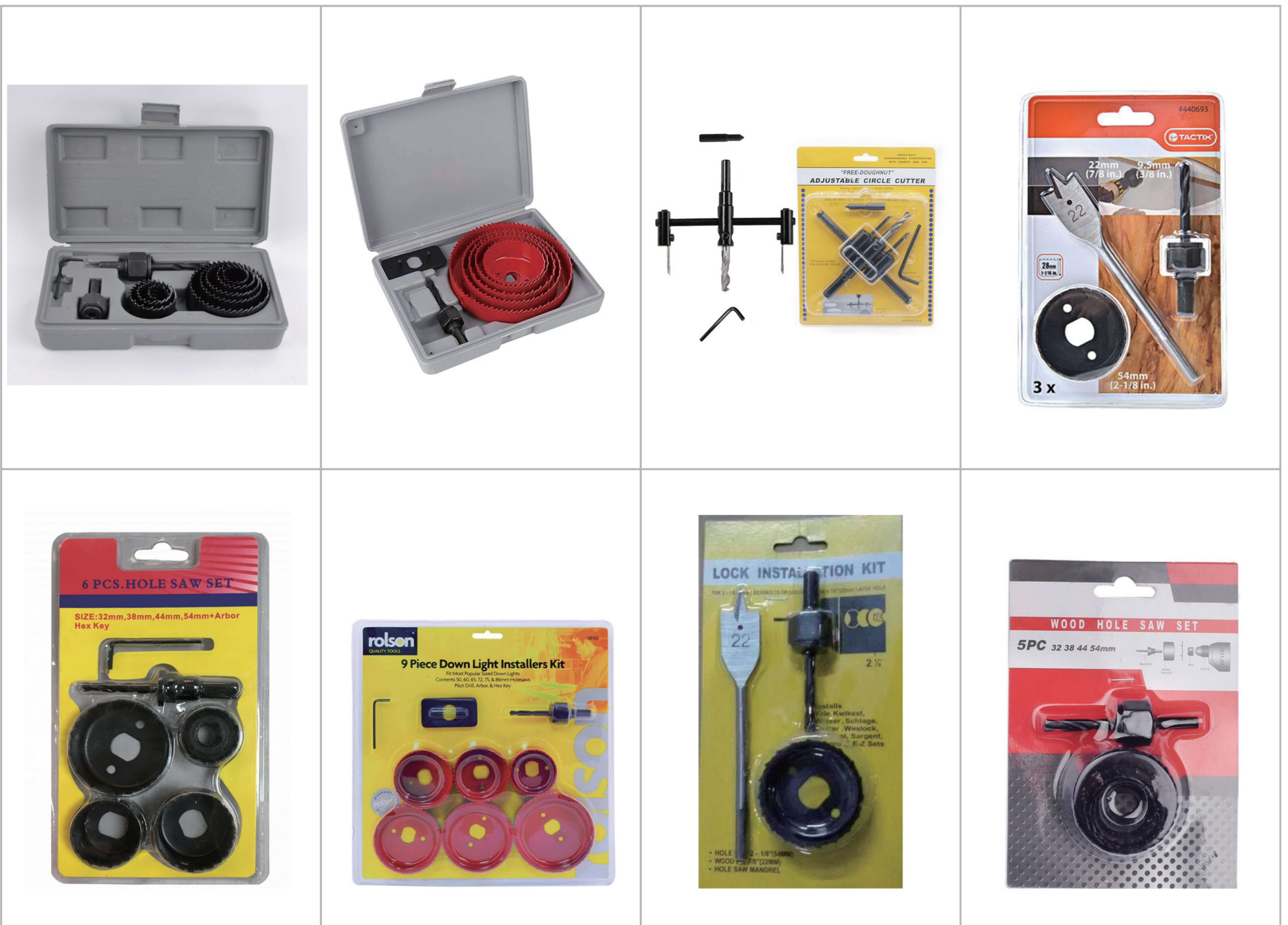


© PAINTED

Size	
MM	Inch
19mm	3/4"
22mm	7/8"
25mm	1"
28mm	1-1/8"
32mm	1-1/4"
35mm	1-3/8"
38mm	1-1/2"
41mm	1-5/8"
44mm	1-3/4"

Size	
MM	Inch
48mm	1-7/8"
51mm	2"
54mm	2-1/8"
57mm	1-1/4"
60mm	1-3/8"
64mm	2-1/2"
67mm	2-5/8"
70mm	2-3/4"
73mm	2-7/8"

Size	
MM	Inch
76mm	3"
80mm	3-1/8"
82mm	3-1/4"
89mm	3-1/2"
92mm	3-5/8"
95mm	3-3/4"
102mm	4"
115mm	4-1/2"
127mm	5"

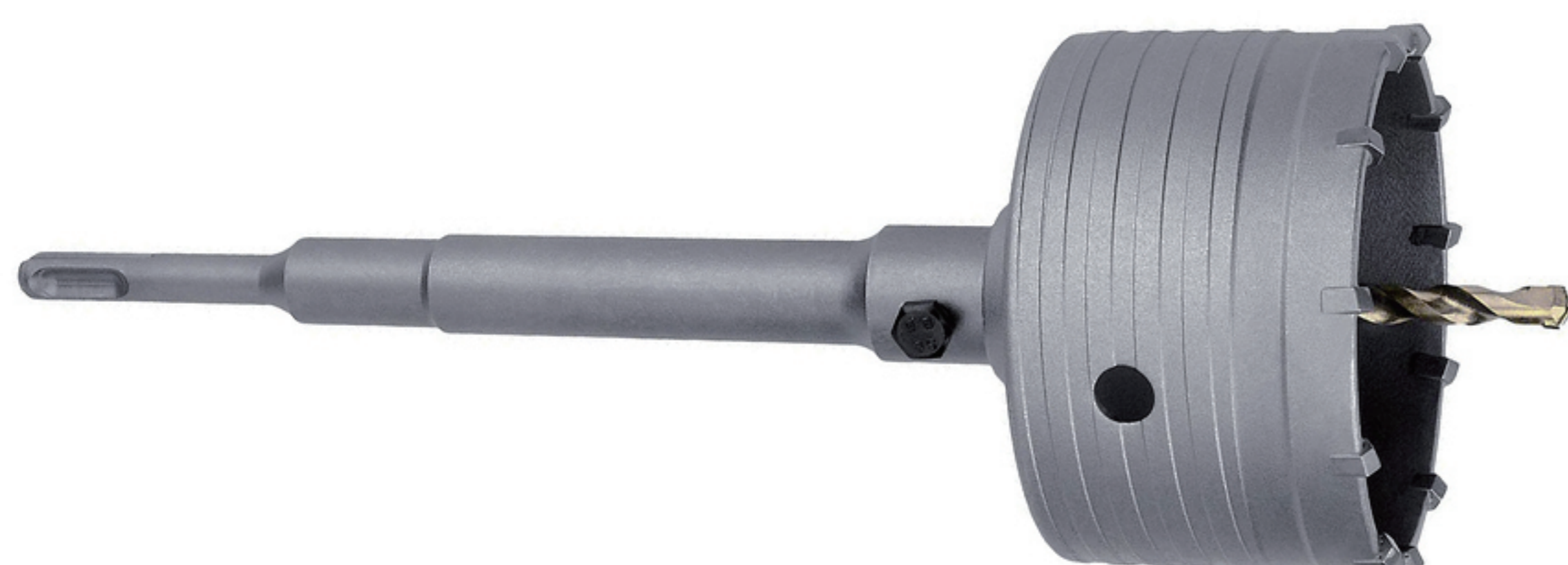
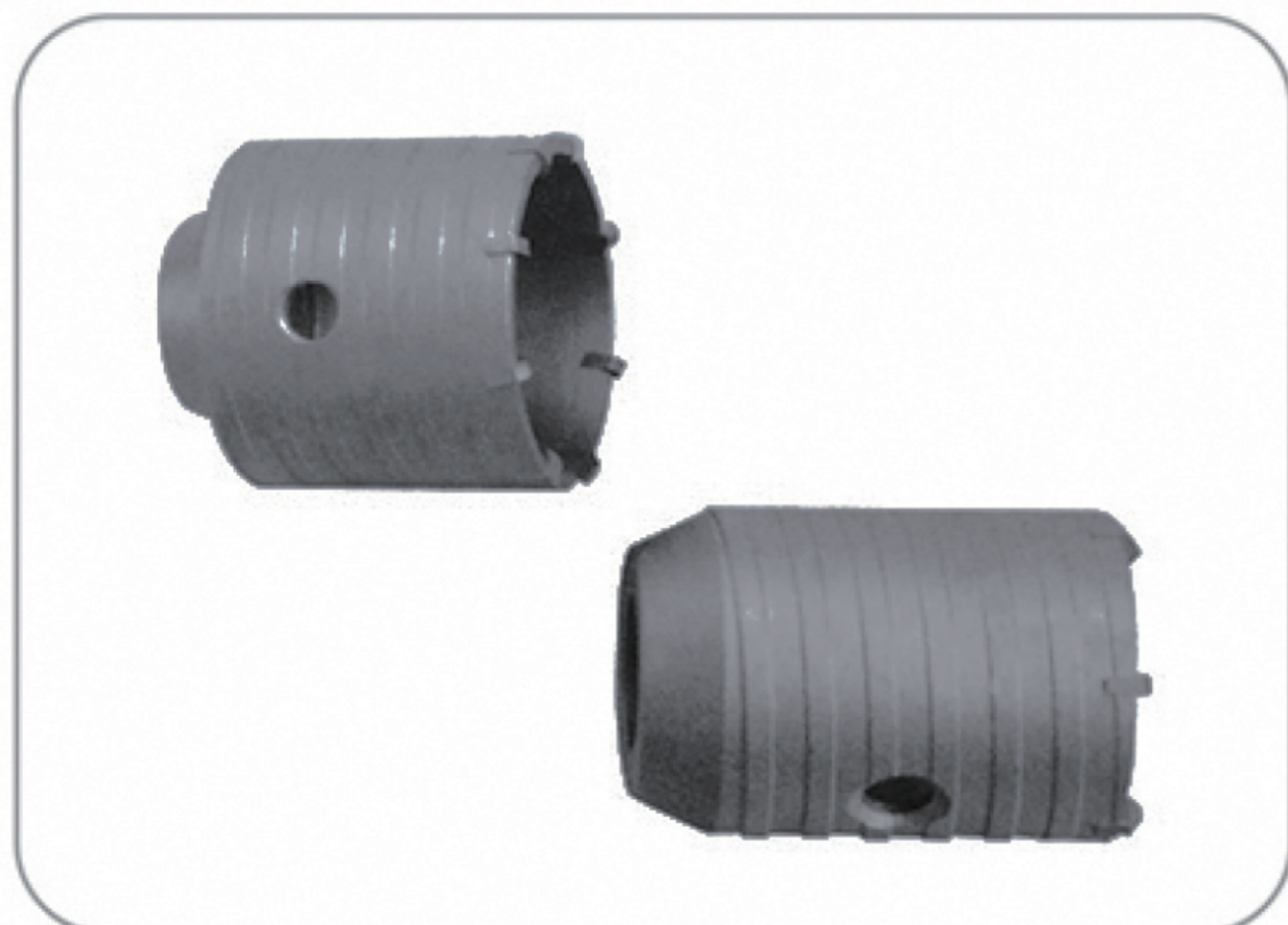


HSS HOLE SAW



Size		Size		Size		Size		Size	
MM	Inch	MM	Inch	MM	Inch	MM	Inch	MM	Inch
12	15/32"	21	13/16"	32	1-1/4"	50	1-31/2"	75	2-15/16"
13	1/2"	22	7/8"	34	1-11/32"	52	2-1/16"	80	2-3/32"
14	9/16"	24	15/16"	35	1-3/8"	54	2-1/8"	85	2-13/32"
15	19/32"	25	1"	38	1-1/2"	55	2-5/32"	90	2-17/32"
16	5/8"	26	1-1/32"	40	1-2/16"	58	2-9/32"	95	3-3/4"
17	21/32"	27	1-3/32"	42	1-21/32"	60	2-3/5"	100	4"
19	3/4"	28	1-1/8"	45	1-25/32"	65	2-9/16"		
20	25/32"	30	1-3/16"	48	1-7/8"	70	2-3/4"		

CONCRETE HOLE SAW



Arbor size /MM	
22x110	22x400
22x125	22x430
22x140	22x450
22x160	22x500
22x200	22x530
22x220	22x600
22x250	22x700
22x280	22x800
22x300	22x1000
22x350	

Concrete Hole saw size / MM	
25x72x22x4	90x72x22x11
30x72x22x4	95x72x22x11
35x72x22x4	100x72x22x12
40x72x22x5	105x72x22x12
45x72x22x5	110x72x22x12
50x72x22x6	115x72x22x12
55x72x22x6	120x72x22x13
60x72x22x7	125x72x22x13
65x72x22x8	130x72x22x13
68x72x22x8	135x72x22x13
70x72x22x9	140x72x22x15
75x72x22x9	150x72x22x15
80x72x22x10	160x72x22x15
85x72x22x10	

TCT HOLE SAW



Size/MM	Industry quality		Medium quality		Size/MM	Industry quality		Medium quality	
	Overall length	Cutting depth/MM	Overall length	Cutting depth/MM		Overall length	Cutting depth/MM	Overall length	Cutting depth/MM
12	95mm	20mm	85mm	5mm	55	95mm	20mm	85mm	5mm
13	95mm	20mm	85mm	5mm	56	95mm	20mm	85mm	5mm
14	95mm	20mm	85mm	5mm	57	95mm	20mm	85mm	5mm
15	95mm	20mm	85mm	5mm	58	95mm	20mm	85mm	5mm
16	95mm	20mm	85mm	5mm	59	95mm	20mm	85mm	5mm
17	95mm	20mm	85mm	5mm	60	95mm	20mm	85mm	5mm
18	95mm	20mm	85mm	5mm	61	95mm	20mm	85mm	5mm
19	95mm	20mm	85mm	5mm	62	95mm	20mm	85mm	5mm
20	95mm	20mm	85mm	5mm	63	95mm	20mm	85mm	5mm
21	95mm	20mm	85mm	5mm	64	95mm	20mm	85mm	5mm
22	95mm	20mm	85mm	5mm	65	95mm	20mm	85mm	5mm
23	95mm	20mm	85mm	5mm	68	95mm	20mm	85mm	5mm
24	95mm	20mm	85mm	5mm	70	95mm	20mm	85mm	5mm
25	95mm	20mm	85mm	5mm	72	95mm	20mm	85mm	5mm
26	95mm	20mm	85mm	5mm	75	95mm	20mm	85mm	5mm
27	95mm	20mm	85mm	5mm	80	95mm	20mm	85mm	5mm
28	95mm	20mm	85mm	5mm	82	95mm	20mm	85mm	5mm
29	95mm	20mm	85mm	5mm	85	95mm	20mm	85mm	5mm
30	95mm	20mm	85mm	5mm	90	95mm	20mm	85mm	5mm
31	95mm	20mm	85mm	5mm	95	95mm	20mm	85mm	5mm
32	95mm	20mm	85mm	5mm	100	95mm	20mm	85mm	5mm
33	95mm	20mm	85mm	5mm	102	95mm	20mm	85mm	5mm
34	95mm	20mm	85mm	5mm	110	95mm	20mm	85mm	5mm
35	95mm	20mm	85mm	5mm	115	95mm	20mm	85mm	5mm
36	95mm	20mm	85mm	5mm	120	95mm	20mm	85mm	5mm
37	95mm	20mm	85mm	5mm	125	95mm	20mm	85mm	5mm
38	95mm	20mm	85mm	5mm	130	95mm	20mm	85mm	5mm
39	95mm	20mm	85mm	5mm	135	95mm	20mm	85mm	5mm
40	95mm	20mm	85mm	5mm	140	95mm	20mm	85mm	5mm
41	95mm	20mm	85mm	5mm	145	95mm	20mm	85mm	5mm
42	95mm	20mm	85mm	5mm	150	95mm	20mm	85mm	5mm
43	95mm	20mm	85mm	5mm	155	95mm	20mm	85mm	5mm
44	95mm	20mm	85mm	5mm	160	95mm	20mm	85mm	5mm
45	95mm	20mm	85mm	5mm	165	95mm	20mm	85mm	5mm
46	95mm	20mm	85mm	5mm	170	95mm	20mm	85mm	5mm
47	95mm	20mm	85mm	5mm	175	95mm	20mm	85mm	5mm
48	95mm	20mm	85mm	5mm	180	95mm	20mm	85mm	5mm
49	95mm	20mm	85mm	5mm	185	95mm	20mm	85mm	5mm
50	95mm	20mm	85mm	5mm	190	95mm	20mm	85mm	5mm
51	95mm	20mm	85mm	5mm	195	95mm	20mm	85mm	5mm
52	95mm	20mm	85mm	5mm	200	95mm	20mm	85mm	5mm
53	95mm	20mm	85mm	5mm					
54	95mm	20mm	85mm	5mm					

DIAMOND CORE DRILL



Outer diameter	Inch	Outer diameter	Inch	Outer diameter	Inch	Outer diameter	Inch	Outer diameter	working length
8mm	1/3"	110mm	4-1/3"	8mm	1/3"	56mm	2-1/5"	19mm	75mm
10mm	2/5"	120mm	4-5/7"	10mm	2/5"	63mm	2-1/12"	20mm	75mm
12mm	1/2"	127mm	5"	12mm	1/2"	66mm	2-3/5"	25mm	75mm
14mm	5/9"	132mm	5-1/5"	14mm	5/9"	71mm	2-4/5"	30mm	75mm
16mm	5/8"	152mm	6"	16mm	5/8"	76mm	3"	35mm	75mm
18mm	5/7"	159mm	6-3/8"	18mm	5/7"	83mm	3-1/4"	40mm	75mm
20mm	4/5"	168mm	6-3/5"	20mm	4/5"	89mm	3-1/2"	45mm	75mm
22mm	7/8"	180mm	7"	22mm	7/8"	96mm	3-4/5"	50mm	75mm
24mm	15/16"	202mm	8"	24mm	15/16"	102mm	4"	53mm	75mm
26mm	1-1/27"	220mm	8-7/10"	24mm	15/16"	108mm	4-1/4"	55mm	75mm
28mm	1-1/9"	245mm	9-3/5"	25mm	1"	110mm	4-1/3"	60mm	75mm
30mm	1-3/16"	300mm	12"	26mm	1-1/27"	114mm	4-2/9"	65mm	75mm
32mm	1-1/4"	350mm	14"	27mm	1-1/16"	120mm	4-5/7"	70mm	75mm
38mm	1-1/2"	400mm	15-1/2*	28mm	1-1/9"	127mm	5"	75mm	75mm
40mm	1-3/5"	450mm	17-7/10"	30mm	1-3/16"	132mm	5-1/5"	80mm	75mm
44mm	1-7/10"	500mm	19-7/10"	32mm	1-1/4"	140mm	5-1/2"	85mm	75mm
51mm	2"	550mm	21-7/10"	35mm	1-3/8"	152mm	6"	90mm	75mm
56mm	2-1/5"	600mm	23-3/5"	36mm	1-2/5"			95mm	75mm
63mm	2-1/21"	650mm	25-3/5"	38mm	1-1/2"			100mm	75mm
66mm	2-3/5"	700mm	27-3/5"	40mm	1-3/5"			105mm	75mm
71mm	2-4/5"	800mm	31-1/2"	44mm	1-7/10"			110mm	75mm
76mm	3"	1000mm	39"	46mm	1-4/5"			115mm	75mm
83mm	3-1/4"			51mm	2"			120mm	75mm
89mm	3-1/2"							150mm	75mm
102mm	4"							165mm	75mm
108mm	4-1/4"							220mm	75mm

*Other sizes are available

DIAMOND CORE DRILL SET



DIAOMOND HOLE SAW



Diamond hole saw for glass,ceramics

6x55mm
8x55mm
10x55mm
12x55mm
14x55mm
16x55mm
18x55mm
20x55mm
22x55mm

Diamond hole saw for glass,ceramics

25x55mm
28x55mm
30x55mm
32x55mm
35x55mm
38x55mm
40x55mm
42x55mm
45x55mm

Diamond hole saw for glass,ceramics

50x55mm
55x55mm
60x55mm
65x55mm
68x55mm
70x55mm
75x55mm
80x55mm
85x55mm

Diamond hole saw for glass,ceramics

90x55mm
95x55mm
100x55mm
105x55mm
110x55mm
115x55mm
120x55mm



Diamond hole saw with center drill for ceramics/marble/granite

16x70mm
18x70mm
20x70mm
22x70mm
25x70mm
28x70mm
30x70mm
32x70mm
35x70mm
38x70mm
40x70mm
42x70mm

Diamond hole saw with center drill for ceramics/marble/granite

45x70mm
50x70mm
55x70mm
60x70mm
65x70mm
68x70mm
70x70mm
75x70mm
80x70mm
90x70mm
100x70mm

Diamond hole saw for ceramics/marble/granite

6x65mm
8x65mm
10x65mm
12x65mm

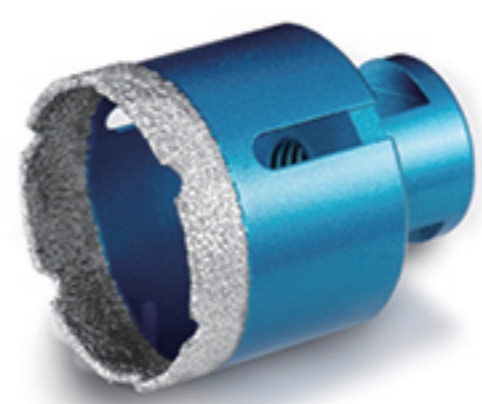


*Other sizes are available

VACUUM BRAZED HOLE SAW



HEX shank



M14 shank



SIZE (mm)	SIZE (mm)	SIZE (mm)	SIZE (mm)	SIZE (mm)
6	16	28	40	65
8	18	30	45	68
10	20	32	50	70
12	22	35	55	
14	25	38	60	

*Other sizes are available

SIZE (mm)	SIZE (mm)	SIZE (mm)	SIZE (mm)	SIZE (mm)
6	18	32	55	80
8	20	35	60	90
10	22	38	65	100
12	25	40	68	
14	28	45	70	
16	30	50	75	