

ISO standard

GB standard TAP

DIN standard TAP

MACHINE & HAND TAPS

High-Speed Steel-Ground Thread

Carbon Steel-Cut Thread

Metric coarse and fine thread



Size	Overall Length	Thread Length	Model No.	Model No.	Size	Overall Length	Thread Length	Model No.	Model No.
M1X0.2	38.5	5.5	A10-1001	A11-1001	M10X0.75	73	20	A10-1044	A11-1044
M1X0.25	38.5	5.5	A10-1002	A11-1002	M10X1	80	24	A10-1045	A11-1045
M1.1X0.2	38.5	5.5	A10-1003	A11-1003	M10X1.25	80	24	A10-1046	A11-1046
M1.1X0.25	38.5	5.5	A10-1004	A11-1004	M10X1.5	80	24	A10-1047	A11-1047
M1.2X0.2	38.5	5.5	A10-1005	A11-1005	M11X0.75	80	22	A10-1048	A11-1048
M1.2X0.25	38.5	5.5	A10-1006	A11-1006	M11X1	80	22	A10-1049	A11-1049
M1.4X0.2	40	7	A10-1007	A11-1007	M11X1.25	85	25	A10-1050	A11-1050
M1.4X0.3	40	7	A10-1008	A11-1008	M11X1.5	85	25	A10-1051	A11-1051
M1.6X0.2	41	8	A10-1009	A11-1009	M12X1	80	22	A10-1052	A11-1052
M1.6X0.35	41	8	A10-1010	A11-1010	M12X1.25	89	29	A10-1053	A11-1053
M1.8X0.2	41	8	A10-1011	A11-1011	M12X1.5	89	29	A10-1054	A11-1054
M1.8X0.35	41	8	A10-1012	A11-1012	M12X1.75	89	29	A10-1055	A11-1055
M2X0.25	41	8	A10-1013	A11-1013	M13X1	80	22	A10-1056	A11-1056
M2X0.4	41	8	A10-1014	A11-1014	M13X1.25	89	29	A10-1057	A11-1057
M2.2X0.25	44.5	9.5	A10-1015	A11-1015	M13X1.5	89	29	A10-1058	A11-1058
M2.2X0.45	44.5	9.5	A10-1016	A11-1016	M14X1	87	22	A10-1059	A11-1059
M2.5X0.35	44.5	9.5	A10-1017	A11-1017	M14X1.25	95	30	A10-1060	A11-1060
M2.5X0.45	44.5	9.5	A10-1018	A11-1018	M14X15	95	30	A10-1061	A11-1061
M3X0.35	48	11	A10-1019	A11-1019	M14X2	95	30	A10-1062	A11-1062
M3X0.5	48	11	A10-1020	A11-1020	M15X1	87	22	A10-1063	A11-1063
M3.5X0.35	50	13	A10-1021	A11-1021	M15X1.5	95	30	A10-1064	A11-1064
M3.5X0.6	50	13	A10-1022	A11-1022	M15X2	95	30	A10-1065	A11-1065
M4X0.5	53	13	A10-1023	A11-1023	M16X1	92	22	A10-1066	A11-1066
M4X0.7	53	13	A10-1024	A11-1024	M16X1.5	102	32	A10-1067	A11-1067
M4.5X0.5	53	13	A10-1025	A11-1025	M16X2	102	32	A10-1068	A11-1068
M4.5X0.75	53	13	A10-1026	A11-1026	M17X1	92	22	A10-1069	A11-1069
M5X0.5	58	16	A10-1027	A11-1027	M17X1.5	102	32	A10-1070	A11-1070
M5X0.8	58	16	A10-1028	A11-1028	M18X1	97	22	A10-1071	A11-1071
M5.5X0.5	62	17	A10-1029	A11-1029	M18X1.5	112	37	A10-1072	A11-1072
M6X0.5	66	19	A10-1030	A11-1030	M18X2	112	37	A10-1073	A11-1073
M6X0.75	66	19	A10-1031	A11-1031	M18X2.5	112	37	A10-1074	A11-1074
M6X1.0	66	19	A10-1032	A11-1032	M20X1	102	22	A10-1075	A11-1075
M7X0.5	66	19	A10-1033	A11-1033	M20X1.5	112	37	A10-1076	A11-1076
M7X0.75	66	19	A10-1034	A11-1034	M20X2	112	37	A10-1077	A11-1077
M7X1.0	66	19	A10-1035	A11-1035	M20X2.5	112	37	A10-1078	A11-1078
M8X0.5	66	19	A10-1036	A11-1036	M22X1	109	24	A10-1079	A11-1079
M8X0.75	66	19	A10-1037	A11-1037	M22X1.5	118	38	A10-1080	A11-1080
M8X	72	22	A10-1038	A11-1038	M22X2	118	38	A10-1081	A11-1081
M8X1.25	72	22	A10-1039	A11-1039	M22X2.5	118	38	A10-1082	A11-1082
M9X0.5	66	19	A10-1040	A11-1040	M24X1	114	24	A10-1083	A11-1083
M9X0.75	66	19	A10-1041	A11-1041	M24X1.5	130	45	A10-1084	A11-1084
M9X	72	22	A10-1042	A11-1042	M24X2	130	45	A10-1085	A11-1085
M9X1.25	72	22	A10-1043	A11-1043	M24X3	130	45	A10-1086	A11-1086
					M25X1.5	130	45	A10-1087	A11-1087
					M25X2	130	45	A10-1088	A11-1088
					M26X1	120	25	A10-1089	A11-1089
					M26X1.5	120	35	A10-1090	A11-1090
					M27X1	120	25	A10-1091	A11-1091
					M27X1.5	127	37	A10-1092	A11-1092
					M27X2	127	37	A10-1093	A11-1093
					M27X3	135	45	A10-1094	A11-1094

MACHINE & HAND TAPS

Size	Overall Length	Thread Length	Model No.	Model No.	Size	Overall Length	Thread Length	Model No.	Model No.
M28X1	120	25	A10-1095	A11-1095	M56X1.5	175	45	A10-1149	A11-1149
M28X1.5	127	37	A10-1096	A11-1096	M56X2	175	45	A10-1150	A11-1150
M28X2	127	37	A10-1097	A11-1097	M56X3	200	70	A10-1151	A11-1151
M30X1	120	25	A10-1098	A11-1098	M56X4	200	70	A10-1152	A11-1152
M30X1.5	127	37	A10-1099	A11-1099	M56X5.5	200	70	A10-1153	A11-1153
M30X2	127	37	A10-1100	A11-1100	M58X1.5	193	76	A10-1154	A11-1154
M30X3	138	48	A10-1101	A11-1101	M58X2	193	76	A10-1155	A11-1155
M30X3.5	138	48	A10-1102	A11-1102	M58X3	209	76	A10-1156	A11-1156
M32X1.5	137	37	A10-1103	A11-1103	M58X4	209	76	A10-1157	A11-1157
M32X2	137	37	A10-1104	A11-1104	M60X1.5	193	76	A10-1158	A11-1158
M33X1.5	137	37	A10-1105	A11-1105	M60X2	193	76	A10-1159	A11-1159
M33X2	137	37	A10-1106	A11-1106	M60X3	209	76	A10-1160	A11-1160
M33X3	151	51	A10-1107	A11-1107	M60X4	209	76	A10-1161	A11-1161
M33X3.5	151	51	A10-1108	A11-1108	M60X5.5	221	76	A10-1162	A11-1162
M35X1.5	144	39	A10-1109	A11-1109	M62X1.5	193	76	A10-1163	A11-1163
M36X1.5	144	39	A10-1110	A11-1110	M62X2	193	76	A10-1164	A11-1164
M36X2	144	39	A10-1111	A11-1111	M62X3	209	76	A10-1165	A11-1165
M36X3	162	57	A10-1112	A11-1112	M62X4	209	76	A10-1166	A11-1166
M36X4	162	57	A10-1113	A11-1113	M64X1.5	193	79	A10-1167	A11-1167
M38X1.5	149	39	A10-1114	A11-1114	M64X2	193	79	A10-1168	A11-1168
M39X1.5	149	39	A10-1115	A11-1115	M64X3	209	79	A10-1169	A11-1169
M39X2	149	39	A10-1116	A11-1116	M64X4	209	79	A10-1170	A11-1170
M39X3	170	60	A10-1117	A11-1117	M64X6	224	79	A10-1171	A11-1171
M39X4	170	60	A10-1118	A11-1118	M65X1.5	193	79	A10-1172	A11-1172
M40X1.5	149	39	A10-1119	A11-1119	M65X2	193	79	A10-1173	A11-1173
M40X2	149	39	A10-1120	A11-1120	M65X3	209	79	A10-1174	A11-1174
M40X3	170	60	A10-1121	A11-1121	M65X4	209	79	A10-1175	A11-1175
M42X1.5	149	39	A10-1122	A11-1122	M68X1.5	203	79	A10-1176	A11-1176
M42X2	149	39	A10-1123	A11-1123	M68X2	203	79	A10-1177	A11-1177
M42X3	170	60	A10-1124	A11-1124	M68X3	219	79	A10-1178	A11-1178
M42X4	170	60	A10-1125	A11-1125	M68X4	219	79	A10-1179	A11-1179
M42X4.5	170	60	A10-1126	A11-1126	M68X6	234	79	A10-1180	A11-1180
M45X1.5	165	45	A10-1127	A11-1127					
M45X2	165	45	A10-1128	A11-1128					
M45X3	187	67	A10-1129	A11-1129					
M45X4	187	67	A10-1130	A11-1130					
M45X4.5	187	67	A10-1131	A11-1131					
M48X1.5	165	45	A10-1132	A11-1132					
M48X2	165	45	A10-1133	A11-1133					
M48X3	187	67	A10-1134	A11-1134					
M48X4	187	67	A10-1135	A11-1135					
M48X5	187	67	A10-1136	A11-1136					
M50X1.5	165	45	A10-1137	A11-1137					
M50X2	165	45	A10-1138	A11-1138					
M50X3	187	67	A10-1139	A11-1139					
M52X1.5	175	45	A10-1140	A11-1140					
M52X2	175	45	A10-1141	A11-1141					
M52X3	200	70	A10-1142	A11-1142					
M52X4	200	70	A10-1143	A11-1143					
M52X5		70	A10-1144	A11-1144					
M55X1.5	175	45	A10-1145	A11-1145					
M55X2	175	45	A10-1146	A11-1146					
M55X3	200	70	A10-1147	A11-1147					
M55X4	200	70	A10-1148	A11-1148					

ISO standard

GB standard TAP

DIN standard TAP

MACHINE & HAND TAPS

High-Speed Steel-Ground Thread

Carbon Steel-Cut Thread



Size	Overall Length	Thread Length	Model No.	Model No.	Size	Overall Length	Thread Length	Model No.	Model No.
NO.0-80UNF	41	8	A12-1001	A36-1001					
NO.1-64UNC	41	8	A12-1002	A36-1002	1-3/8-6UNC	162	57	A12-1044	A36-1044
NO.1-72UNF	41	8	A12-1003	A36-1003					
NO.2-56UNC	445	95	A12-1004	A36-1004	1-3/8-12UNF	144	39	A12-1045	A36-1045
NO.2-64UNF	445	95	A12-1005	A36-1005					
NO.3-48UNC	445	95	A12-1006	A36-1006	1-1/2-6UNC	170	60	A12-1046	A36-1046
NO.3-56UNF	445	95	A12-1007	A36-1007					
NO.4-40UNC	48	11	A12-1008	A36-1008	1-1/2-12UNF	149	39	A12-1047	A36-1047
NO.4-48UNF	48	11	A12-1009	A36-1009					
NO.5-40UNC	48	11	A12-1010	A36-1010	1-3/4-5UNC	187	67	A12-1048	A36-1048
NO.5-44UNF	48	11	A12-1011	A36-1011					
NO.6-32UNC	50	13	A12-1012	A36-1012	2-4-1/2UNC	200	70	A12-1049	A36-1049
NO.6-40UNF	50	13	A12-1013	A36-1013					
NO.8-32UNC	53	13	A12-1014	A36-1014	2-1/4-4-1/2UNC	221	76	A12-1050	A36-1050
NO.8-36UNF	53	13	A12-1015	A36-1015					
NO.10-24UNC	58	16	A12-1016	A36-1016	2-1/2-4UNC	224	79	A12-1051	A36-1051
NO.10-32UNF	58	16	A12-1017	A36-1017					
NO.12-24UNC	62	17	A12-1018	A36-1018	2-3/4-4UNC	234	79	A12-1052	A36-1052
NO.12-28UNF	62	17	A12-1019	A36-1019					
1/4-20UNC	66	19	A12-1020	A36-1020	3-4UNC	258	83	A12-1053	A36-1053
1/4-28UNF	66	19	A12-1021	A36-1021					
5/16-18UNC	72	22	A12-1022	A36-1022	3-1/4-4UNC	261	86	A12-1054	A36-1054
5/16-24UNF	72	22	A12-1023	A36-1023					
3/8-16UNC	80	24	A12-1024	A36-1024	3-1/2-4UNC	261	86	A12-1055	A36-1055
3/8-24UNF	80	24	A12-1025	A36-1025					
7/16-14UNC	85	25	A12-1026	A36-1026	3-3/4-4UNC	279	89	A12-1056	A36-1056
7/16-20UNF	85	25	A12-1027	A36-1027					
1/2-13UNC	89	29	A12-1028	A36-1028	4-4UNC	279	89	A12-1057	A36-1057
1/2-20UNF	89	29	A12-1029	A36-1029					
9/16-12UNC	95	30	A12-1030	A36-1030					
9/16-18UNF	95	30	A12-1031	A36-1031					
5/8-11UNC	102	32	A12-1032	A36-1032					
5/8-18UNF	102	32	A12-1033	A36-1033					
3/4-10UNC	112	37	A12-1034	A36-1034					
3/4-16UNF	112	37	A12-1035	A36-1035					
7/8-9UNC	118	38	A12-1036	A36-1036					
7/8-14UNF	118	38	A12-1037	A36-1037					
1-8UNC	130	45	A12-1038	A36-1038					
1-12UNF	130	45	A12-1039	A36-1039					
1-1/8-7UNC	138	48	A12-1040	A36-1040					
1-1/8-12UNF	127	37	A12-1041	A36-1041					
1-1/4-7UNC	151	51	A12-1042	A36-1042					
1-1/4-12UNF	137	37	A12-1043	A36-1043					

ISO standard

GB standard TAP

DIN standard TAP

MACHINE & HAND TAPS

High-Speed Steel-Ground Thread

Carbon Steel-Cut Thread



Size	Overall Length	Thread Length	Model No.	Model No.	Size	Overall Length	Thread Length	Model No.	Model No.
1/8-40BSW	48	11	A13-1001	A37-1001	2-1/2-4BSW	224	79	A13-1044	A37-1044
3/16-24BSW	58	16	A13-1002	A37-1002	2-1/2-6BSF	224	79	A13-1045	A37-1045
3/16-32BSF	58	16	A13-1003	A37-1003	2-3/4-3-1/2BSW	234	79	A13-1046	A37-1046
7/32-28BSF	62	17	A13-1004	A37-1004	2-3/4-6BSF	234	79	A13-1047	A37-1047
1/4-20BSW	66	19	A13-1005	A37-1005	3-3-1/2BSW	258	83	A13-1048	A37-1048
1/4-26BSF	66	19	A13-1006	A37-1006	3-5BSF	258	83	A13-1049	A37-1049
9/32-26BSF	66	19	A13-1007	A37-1007	3-1/4-3-1/4BSW	261	86	A13-1050	A37-1050
5/16-18BSW	72	22	A13-1008	A37-1008	3-1/4-5BSW	261	86	A13-1051	A37-1051
5/16-22BSF	72	22	A13-1009	A37-1009	3-1/2-3-1/4BSW	261	86	A13-1052	A37-1052
3/8-16BSW	80	24	A13-1010	A37-1010	3-1/2-4-1/2BSF	261	86	A13-1053	A37-1053
3/8-20BSF	80	24	A13-1011	A37-1011	3-3/4-3BSW	279	89	A13-1054	A37-1054
7/16-14BSW	85	25	A13-1012	A37-1012	3-3/4-4-1/2BSF	279	89	A13-1055	A37-1055
7/16-18BSF	85	25	A13-1013	A37-1013	4-3BSW	279	89	A13-1056	A37-1056
1/2-12BSW	89	29	A13-1014	A37-1014	4-4-1/2BSF	279	89	A13-1057	A37-1057
1/2-16BSF	89	29	A13-1015	A37-1015					
9/16-12BSW	95	30	A13-1016	A37-1016					
9/16-16BSF	95	30	A13-1017	A37-1017					
5/8-11BSW	102	32	A13-1018	A37-1018					
5/8-14BSF	102	32	A13-1019	A37-1019					
11/16-11BSW	112	37	A13-1020	A37-1020					
11/16-14BSF	112	37	A13-1021	A37-1021					
3/4-10BSW	112	37	A13-1022	A37-1022					
3/4-12BSF	112	37	A13-1023	A37-1023					
7/8-9BSW	118	38	A13-1024	A37-1024					
7/8-11BSF	118	38	A13-1025	A37-1025					
1-8BSW	130	45	A13-1026	A37-1026					
1-10BSF	130	45	A13-1027	A37-1027					
1-1/8-7BSW	138	48	A13-1028	A37-1028					
1-1/8-9BSF	138	48	A13-1029	A37-1029					
1-1/4-7BSW	151	51	A13-1030	A37-1030					
1-1/4-9BSF	151	51	A13-1031	A37-1031					
1-3/8-6BSW	162	57	A13-1032	A37-1032					
1-3/8-8BSF	162	57	A13-1033	A37-1033					
1-1/2-6BSW	170	60	A13-1034	A37-1034					
1-1/2-8BSF	170	60	A13-1035	A37-1035					
1-5/8-5BSW	170	60	A13-1036	A37-1036					
1-5/8-8BSF	170	60	A13-1037	A37-1037					
1-3/4-5BSW	187	67	A13-1038	A37-1038					
1-3/4-7BSF	187	67	A13-1039	A37-1039					
2-4-1/2BSW	200	70	A13-1040	A37-1040					
2-7BSF	200	70	A13-1041	A37-1041					
2-1/4-4BSW	221	76	A13-1042	A37-1042					
2-1/4-6BSF	221	76	A13-1043	A37-1043					

High-Speed Steel-Ground Thread



Size	Overall Length	Thread Length	Model No.
BANO.14	38.5	5.5	A14-1001
BANO.13	38.5	5.5	A14-1002
BANO.12	40	7	A14-1003
BANO.11	41	8	A14-1004
BANO.10	41	8	A14-1005
BANO.9	41	8	A14-1006
BANO.8	44.5	9.5	A14-1007
BANO.7	44.5	9.5	A14-1008
BANO.6	44.5	9.5	A14-1009
BANO.5	48	11	A14-1010
BANO.4	50	13	A14-1011
BANO.3	53	13	A14-1012
BANO.2	58	16	A14-1013
BANO.1	62	17	A14-1014
BANO.0	66	19	A14-1015

NUT TAPS

GB-T967-94

Ground Thread, High Speed Steel



Size	Overall Length	Thread Length	Model No.
M2X0.4	36	12	A23-1001
M2.2X0.45	36	14	A23-1002
M2.5X0.45	36	14	A23-1003
M3X0.35	40	11	A23-1004
M3X0.5	40	15	A23-1005
M3.5X0.35	45	11	A23-1006
M3.5X0.6	45	18	A23-1007
M4X0.5	50	15	A23-1008
M4X0.7	50	21	A23-1009
M5X0.5	55	15	A23-1010
M5X0.8	55	24	A23-1011
M6X0.75	55	22	A23-1012
M6X1	60	30	A23-1013
M8X0.75	55	22	A23-1014
M8X1	60	30	A23-1015
M8X1.25	65	36	A23-1016
M10X0.75	55	22	A23-1017
M10X1	60	30	A23-1018
M10X1.25	65	36	A23-1019
M10X1.5	70	40	A23-1020
M12X1	65	30	A23-1021
M12X1.25	70	36	A23-1022
M12X1.5	80	45	A23-1023
M12X1.75	80	47	A23-1024
M14X1	70	30	A23-1025
M14X1.5	80	45	A23-1026
M14X2	90	54	A23-1027
M16X1	70	30	A23-1028
M16X1.5	85	45	A23-1029
M16X2	95	58	A23-1030
M18X1	80	30	A23-1031
M18X1.5	90	45	A23-1032
M18X2	100	54	A23-1033
M18X2.5	110	62	A23-1034
M20X1	80	30	A23-1035
M20X1.5	90	45	A23-1036
M20X2	100	54	A23-1037
M20X2.5	110	62	A23-1038
M22X1	80	30	A23-1039
M22X1.5	90	45	A23-1040
M22X2	100	54	A23-1041
M22X2.5	110	62	A23-1042
M24X1	90	30	A23-1043
M24X1.5	100	45	A23-1044
M24X2	110	54	A23-1045
M24X3	130	72	A23-1046

Size	Overall Length	Thread Length	Model No.
M2X0.4	36	12	A23-1001
M2.2X0.45	36	14	A23-1002
M2.5X0.45	36	14	A23-1003
M3X0.35	40	11	A23-1004
M3X0.5	40	15	A23-1005
M3.5X0.35	45	11	A23-1006
M3.5X0.6	45	18	A23-1007
M4X0.5	50	15	A23-1008
M4X0.7	50	21	A23-1009
M5X0.5	55	15	A23-1010
M5X0.8	55	24	A23-1011
M6X0.75	55	22	A23-1012
M6X1	60	30	A23-1013
M8X0.75	55	22	A23-1014
M8X1	60	30	A23-1015
M8X1.25	65	36	A23-1016
M10X0.75	55	22	A23-1017
M10X1	60	30	A23-1018
M10X1.25	65	36	A23-1019
M10X1.5	70	40	A23-1020
M12X1	65	30	A23-1021
M12X1.25	70	36	A23-1022
M12X1.5	80	45	A23-1023
M12X1.75	80	47	A23-1024
M14X1	70	30	A23-1025
M14X1.5	80	45	A23-1026
M14X2	90	54	A23-1027
M16X1	70	30	A23-1028
M16X1.5	85	45	A23-1029
M16X2	95	58	A23-1030
M18X1	80	30	A23-1031
M18X1.5	90	45	A23-1032
M18X2	100	54	A23-1033
M18X2.5	110	62	A23-1034
M20X1	80	30	A23-1035

METRIC TAPER THREAD TAPS

Ground Thread, High Speed Steel



Size	Overall Length	Thread Length	Model No.
ZM6	45	17	A25-1001
ZM8	50	17	A25-1002
ZM10	55	17	A25-1003
ZM14	60	26	A25-1004
ZM18	70	26	A25-1005
ZM22	75	26	A25-1006
ZM27	80	34	A25-1007
ZM33	95	34	A25-1008
ZM42	105	35	A25-1009
ZM48	110	35	A25-1010
ZM60	120	36	A25-1011
M6X0.75	55	22	A23-1012

LONG SHANK MACHINE TAPS

Ground Thread, High Speed Steel



Size	Overall Length	Thread Length	Model No.
M3X0.5	66	11	A24-1001
M3X0.35	66	11	A24-1002
M3.6X0.6	68	13	A24-1003
M3.5X0.35	68	13	A24-1004
M4X0.7	73	13	A24-1005
M4X0.5	73	13	A24-1006
M4.5X0.75	73	13	A24-1007
M4.5X0.5	73	13	A24-1008
M5X0.8	79	16	A24-1009
M5X0.5	79	16	A24-1010
M5.5X0.5	84	17	A24-1011
M6X1	89	19	A24-1012
M6X0.75	89	19	A24-1013
M7X1	89	19	A24-1014
M7X0.75	89	19	A24-1015
M8X1.25	97	22	A24-1016
M8X1	97	19	A24-1017
M9X1.25	97	22	A24-1018
M9X1	97	19	A24-1019
M10X1.5	108	24	A24-1020
M10X1	108	20	A24-1021
M10X1.25	108	20	A24-1022
M11X1.5	115	25	A24-1023
M12X1.75	119	29	A24-1024
M12X1.25	119	24	A24-1025
M12X1.5	119	29	A24-1026
M14X2	127	30	A24-1027
M14X1.25	127	25	A24-1028
M14X1.5	127	30	A24-1029
M15X1.5	127	30	A24-1030
M16X2	137	32	A24-1031
M16X1.5	137	32	A24-1032
M17X1.5	137	32	A24-1033
M18X2.5	149	37	A24-1034
M18X1.5	149	29	A24-1035
M18X2	149	37	A24-1036
M20X2.5	149	37	A24-1037
M20X1.5	149	29	A24-1038
M20X2	149	37	A24-1039
M22X2.5	158	38	A24-1040
M22X1.5	158	33	A24-1041
M22X2	158	38	A24-1042
M24X3	172	45	A24-1043
M24X1.5	172	35	A24-1044
M24X2	172	35	A24-1045

CYLINDER TAPER THREAD TAPS

Ground Thread, High Speed Steel



Size	Overall Length	Thread Length	Model No.
pz19.2	75	32	A26-1001
pz27.8	85	40	A26-1002
pz30.3	85	40	A26-1003
pz39	95	42	A26-1004

AIRINLET VALVE TAPS

Ground Thread, High Speed Steel



Size	Overall Length	Thread Length	Model No.
5V1	62	17	A28-1001
5V	62	17	A28-1002
6V1	66	19	A28-1003
8V1	69	19	A28-1004
8V2	69	19	A28-1005
9V1	76	20	A28-1006
10V1	76	20	A28-1007
10V2	76	20	A28-1008
11V1	82	22	A28-1009
12V1	82	22	A28-1010
13V1	82	22	A28-1011
13V2	82	22	A28-1012
15V1	90	25	A28-1013
16V1	90	25	A28-1014
17V1	104	29	A28-1015
17V2	104	29	A28-1016
17V3	104	29	A28-1017
19V1	104	29	A28-1018
20V1	104	29	A28-1019

HAND TAPS

DIN-352

3Piece, High Speed Steel



Size	Overall Length	Thread Length	Model No.
M1X0.25	32	5.5	B10-1001
M1.1X0.25	32	5.5	B10-1002
M1.2X0.25	32	5.5	B10-1003
M1.4X0.3	32	7	B10-1004
M1.6X0.35	32	8	B10-1005
M1.7X0.35	32	8	B10-1006
M1.8X0.35	32	8	B10-1007
M2X0.4	36	8	B10-1008
M2.2X0.45	36	9	B10-1009
M2.3X0.4	36	9	B10-1010
M2.5X0.45	40	9	B10-1011
M2.6X0.45	40	9	B10-1012
M3X0.5	40	11	B10-1013
M3.5X0.6	45	13	B10-1014
M4X0.7	45	13	B10-1015
M4.5X0.75	50	16	B10-1016
M5X0.8	50	16	B10-1017
M6X1	50	19	B10-1018
M7X1	50	19	B10-1019
M8X1.25	56	22	B10-1020
M9X1.25	63	22	B10-1021
M10X1.5	70	24	B10-1022

Size	Overall Length	Thread Length	Model No.
M11X1.5	70	24	B10-1023
M12X1.75	75	29	B10-1024
M14X2	80	30	B10-1025
M16X2	80	32	B10-1026
M18X2.5	95	40	B10-1027
M20X2.5	95	40	B10-1028
M22X2.5	100	40	B10-1029
M24X3	110	50	B10-1030
M27X3	110	50	B10-1031
M30X3.5	125	56	B10-1032
M33X3.5	125	56	B10-1033
M36X4	150	63	B10-1034
M39X4	150	63	B10-1035
M42X4.5	150	63	B10-1036
M45X4.5	160	70	B10-1037
M48X5	180	75	B10-1038
M52X5	180	75	B10-1039
M56X5.5	200	85	B10-1040
M60X5.5	200	85	B10-1041
M64X6	220	90	B10-1042
M68X6	220	90	B10-1043

DIN-352/BSW

3Piece, High Speed Steel



Size	Overall Length	Thread Length	Model No.
1/16-60BSW	32	10	B11-1001
3/32-48BSW	36	11	B11-1002
1/8-40BSW	40	12	B11-1003
5/32-32BSW	45	14	B11-1004
3/16-24BSW	50	18	B11-1005
7/32-24BSW	50	18	B11-1006
1/4-20BSW	56	22	B11-1007
5/16-18BSW	63	25	B11-1008
3/8-16BSW	70	28	B11-1009
7/16-14BSW	75	30	B11-1010
1/2-12BSW	80	32	B11-1011
9/16-12BSW	80	32	B11-1012
5/8-11BSW	90	36	B11-1013

Size	Overall Length	Thread Length	Model No.
3/4-10BSW	105	40	B11-1014
7/8-9BSW	110	45	B11-1015
1-8BSW	110	50	B11-1016
1-1/8-7BSW	132	56	B11-1017
1-1/4-7BSW	132	56	B11-1018
1-3/8-6BSW	150	63	B11-1019
1-1/2-6BSW	150	63	B11-1020
1-5/8-5BSW	160	70	B11-1021
1-3/4-5BSW	160	70	B11-1022
1-7/8-4-1/2BSW	190	80	B11-1023
2"-4-1/2BSW	190	80	B11-1024

HAND TAPS

DIN-351/UNC

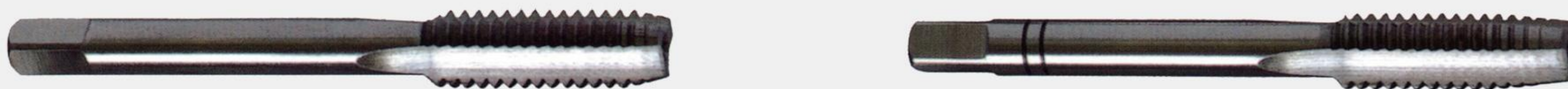
3Piece, High Speed Steel



Size	Overall Length	Thread Length	Model No.	Size	Overall Length	Thread Length	Model No.
No.1-64UNC	32	10	B12-1001	1/2-13UNC	80	32	B12-1014
No.2-56UNC	36	11	B12-1002	9/16-12UNC	80	32	B12-1015
No.3-48UNC	36	11	B12-1003	5/8-11UNC	90	36	B12-1016
No.4-40UNC	40	12	B12-1004	3/4-10UNC	105	40	B12-1017
No.5-40UNC	40	12	B12-1005	7/8-9UNC	110	45	B12-1018
No.6-32UNC	45	14	B12-1006	1-8UNC	110	50	B12-1019
No.8-32UNC	45	14	B12-1007	1-1/8-7UNC	132	56	B12-1020
No.10-24UNC	48	16	B12-1008	1-1/4-7UNC	132	56	B12-1021
No.12-24UNC	50	18	B12-1009	1-3/8-6UNC	150	63	B12-1022
1/4-20UNC	56	22	B12-1010	1-1/2-6UNC	150	63	B12-1023
5/16-18UNC	63	25	B12-1011	1-3/4-5UNC	160	70	B12-1024
3/8-16UNC	70	28	B12-1012	2"-4-1/2UNC	190	80	B12-1025
7/16-14UNC	75	30	B12-1013				

DIN-351/UNF

2Piece, High Speed Steel



Size	Overall Length	Thread Length	Model No.	Size	Overall Length	Thread Length	Model No.
No.0-80UNF	28	8	B12-1026	7/16-20UNF	63	18	B12-1039
No.1-72UNF	32	10	B12-1027	1/2-20UNF	63	20	B12-1040
No.2-64UNF	32	10	B12-1028	9/16-18UNF	70	20	B12-1041
No.3-56UNF	32	10	B12-1029	5/8-18UNF	70	20	B12-1042
No.4-48UNF	36	11	B12-1030	3/4-16UNF	80	22	B12-1043
No.5-44UNF	40	12	B12-1031	7/8-14UNF	80	22	B12-1044
No.6-40UNF	40	12	B12-1032	1-12UNF	90	22	B12-1045
No.8-36UNF	40	12	B12-1033	1-14UNF	90	22	B12-1046
No.10-32UNF	45	14	B12-1034	1-1/8-12UNF	100	28	B12-1047
No.12-28UNF	50	16	B12-1035	1-1/4-12UNF	100	28	B12-1048
1/4-28UNF	56	18	B12-1036	1-3/8-12UNF	110	32	B12-1049
5/16-24UNF	56	18	B12-1037	1-1/2-12UNF	110	32	B12-1050
3/8-24UNF	63	18	B12-1038				

HAND TAPS

DIN-2181/MF

2Piece, High Speed Steel



Size	Overall Length	Thread Length	Model No.	Size	Overall Length	Thread Length	Model No.
M3X0.35	40	9	B13-1001	M24X1.5	90	22	B13-1041
M4X0.35	45	10	B13-1002	M24X2	90	22	B13-1042
M4X0.5	45	10	B13-1003	M25X1.5	90	22	B13-1043
M5X0.5	50	12	B13-1004	M26X1.5	90	22	B13-1044
M6X0.5	50	14	B13-1005	M26X2	90	22	B13-1045
M6X0.75	50	14	B13-1006	M27X1.5	90	22	B13-1046
M7X0.75	50	14	B13-1007	M27X2	90	22	B13-1047
M8X0.5	50	19	B13-1008	M28X1.5	90	22	B13-1048
M8X0.75	50	19	B13-1009	M28X2	90	22	B13-1049
M8X1	56	22	B13-1010	M30X1	90	22	B13-1050
M9X1	63	22	B13-1011	M30X1.5	90	22	B13-1051
M10X0.75	63	20	B13-1012	M30X2	90	22	B13-1052
M10X1	63	20	B13-1013	M32X1.5	90	22	B13-1053
M10X1.25	70	24	B13-1014	M33X1.5	100	25	B13-1054
M11X1	63	20	B13-1015	M33X2	100	25	B13-1055
M12X1	70	22	B13-1016	M34X1.5	100	25	B13-1056
M12X1.25	70	22	B13-1017	M35X1.5	100	25	B13-1057
M12X1.5	70	22	B13-1018	M36X1.5	100	25	B13-1058
M13X1	70	22	B13-1019	M36X2	125	40	B13-1059
M13X1.5	70	22	B13-1020	M36X3	125	40	B13-1060
M14X1	70	22	B13-1021	M38X1.5	100	25	B13-1061
M14X1.25	70	22	B13-1022	M39X2	125	40	B13-1062
M14X1.5	70	22	B13-1023	M39X3	125	40	B13-1063
M15X1	70	22	B13-1024	M40X1.5	110	25	B13-1064
M15X1.5	70	22	B13-1025	M40X2	125	40	B13-1065
M16X1	70	22	B13-1026	M42X1.5	110	25	B13-1066
M16X1.25	70	22	B13-1027	M42X2	125	40	B13-1067
M16X1.5	70	22	B13-1028	M42X3	125	40	B13-1068
M18X1	80	22	B13-1029	M45X1.5	110	25	B13-1069
M18X1.25	80	22	B13-1030	M45X2	125	40	B13-1070
M18X1.5	80	22	B13-1031	M45X3	125	40	B13-1071
M18X2	80	22	B13-1032	M48X1.5	140	40	B13-1072
M20X1	80	22	B13-1033	M48X2	140	40	B13-1073
M20X1.25	80	22	B13-1034	M48X3	140	40	B13-1074
M20X1.5	80	22	B13-1035	M50X1.5	140	40	B13-1075
M20X2	80	22	B13-1036	M52X1.5	140	40	B13-1076
M22X1	80	22	B13-1037	M52X2	140	40	B13-1077
M22X1.5	80	22	B13-1038	M52X3	140	40	B13-1078
M22X2	80	22	B13-1039				
M24X1	90	22	B13-1040				

MACHINE TAPS

DIN-371/M

High Speed Steel



Size	Overall Length	Thread Length	Model No.	Size	Overall Length	Thread Length	Model No.
M1.4X0.3	40	7	B14-1001	M3X0.5	56	11	B14-1010
M1.6X0.35	40	8	B14-1002	M3.5X0.6	56	13	B14-1011
M1.7X0.35	40	8	B14-1003	M4X0.7	63	13	B14-1012
M1.8X0.35	40	8	B14-1004	M5X0.8	70	16	B14-1013
M2X0.4	45	8	B14-1005	M6X1	80	19	B14-1014
M2.2X0.45	45	9	B14-1006	M7X1	80	19	B14-1015
M2.3X0.4	45	9	B14-1007	M8X1.25	90	22	B14-1016
M2.5X0.45	50	9	B14-1008	M9X1.25	90	22	B14-1017
M2.6X0.45	50	9	B14-1009	M10X1.5	100	24	B14-1018

DIN-371/W/BSF

High Speed Steel



Size	Overall Length	Thread Length	Model No.	Size	Overall Length	Thread Length	Model No.
1/16-60BSW	40	8	B15-1001	5/16-18BSW	90	20	B15-1008
3/32-48BSW	50	9	B15-1002	3/8-16BSW	100	22	B15-1009
1/8-40BSW	56	11	B15-1003	3/16-32BSF	70	15	B15-1010
5/32-32BSW	63	13	B15-1004	1/4-26BSF	80	17	B15-1011
3/16-24BSW	70	15	B15-1005	5/16-22BSF	90	20	B15-1012
7/32-24BSW	80	16	B15-1006	3/8-20BSF	100	22	B15-1013
1/4-20BSW	80	17	B15-1007				

DIN-371/UNC/UNF

High Speed Steel



Size	Overall Length	Thread Length	Model No.	Size	Overall Length	Thread Length	Model No.
No.1-64UNC	40	8	B16-1001	No.1-72UNF	40	8	B16-1014
No.2-56UNC	45	9	B16-1002	No.2-64UNF	45	9	B16-1015
No.3-48UNC	50	9	B16-1003	No.3-56UNF	50	9	B16-1016
No.4-40UNC	56	11	B16-1004	No.4-48UNF	56	11	B16-1017
No.5-40UNC	56	11	B16-1005	No.5-44UNF	56	11	B16-1018
No.6-32UNC	56	12	B16-1006	No.6-40UNF	56	12	B16-1019
No.8-32UNC	63	13	B16-1007	No.8-36UNF	63	13	B16-1020
No.10-24UNC	70	15	B16-1008	No.10-32UNF	70	15	B16-1021
No.12-24UNC	80	16	B16-1009	No.12-28UNF	80	16	B16-1022
1/4-20UNC	80	17	B16-1010	1/4-28UNF	80	17	B16-1023
5/16-18UNC	90	20	B16-1011	5/16-24UNF	90	20	B16-1024
3/8-16UNC	100	22	B16-1012	3/8-24UNF	100	22	B16-1025
No.0-80UNF	40	8	B16-1013				

MACHINE AND HAND ROUND THREAD DIES

ISO-2568

High Speed Steel or Alloy Tool Steel



Size	Outside	HSS Model No.	9CrSi Model No.	Size	Outside	HSS Model No.	9CrSi Model No.
M1X0.2	16X5mm	E10-1001	E11-1001	M12X1.75	38x14mm	E10-1050	E11-1050
M1X0.25	16X5mm	E10-1002	E11-1002	M14X1	38X10mm	E10-1051	E11-1051
M1.1x0.2	16X5mm	E10-1003	E11-1003	M14X1.25	38X10mm	E10-1052	E11-1052
M1.1X0.25	16X5mm	E10-1004	E11-1004	M14X1.5	38X10mm	E10-1053	E11-1053
M1.2X0.2	16X5mm	E10-1005	E11-1005	M14X2	38X14mm	E10-1054	E11-1054
M1.2X0.25	16X5mm	E10-1006	E11-1006	M15X1.5	38X10mm	E10-1055	E11-1055
M1.4X0.2	16X5mm	E10-1007	E11-1007	M16X1	45X14mm	E10-1056	E11-1056
M1.4X0.3	16X5mm	E10-1008	E11-1008	M16X1.5	45X14mm	E10-1057	E11-1057
M1.6X0.2	16x5mm	E10-1009	E11-1009	M16X2	45X18mm	E10-1058	E11-1058
M1.6X0.35	16X5mm	E10-1010	E11-1010	M17X1.5	45X14mm	E10-1059	E11-1059
M1.8X0.2	16X5mm	E10-1011	E11-1011	M18X1	45X14mm	E10-1060	E11-1060
M1.8X0.35	16X5mm	E10-1012	E11-1012	M18X1.5	45X14mm	E10-1061	E11-1061
M2X0.25	16X5mm	E10-1013	E11-1013	M18X2	45X14mm	E10-1062	E11-1062
M2X0.4	16X5mm	E10-1014	E11-1014	M18X2.5	45X18mm	E10-1063	E11-1063
M2.2X0.25	16X5mm	E10-1015	E11-1015	M20X1	45X14mm	E10-1064	E11-1064
M2.2x0.45	16X5mm	E10-1016	E11-1016	M20X1.5	45X14mm	E10-1065	E11-1065
M2.5X0.35	16X5mm	E10-1017	E11-1017	M20X2	45X14mm	E10-1066	E11-1066
M2.5X0.45	16X5mm	E10-1018	E11-1018	M20X2.5	45X18mm	E10-1067	E11-1067
M3X0.35	20X5mm	E10-1019	E11-1019	M22X1	55X16mm	E10-1068	E11-1068
M3X0.5	20X5mm	E10-1020	E11-1020	M22X1.5	55X16mm	E10-1069	E11-1069
M3.5X0.35	20x5mm	E10-1021	E11-1021	M22X2	55X16mm	E10-1070	E11-1070
M3.5X0.6	20X5mm	E10-1022	E11-1022	M22X2.5	55X22mm	E10-1071	E11-1071
M4X0.5	20x5mm	E10-1023	E11-1023	M24X1	55X16mm	E10-1072	E11-1072
M4X0.7	20X5mm	E10-1024	E11-1024	M24X1.5	55X16mm	E10-1073	E11-1073
M4.5X0.5	20X5mm	E10-1025	E11-1025	M24X2	55X16mm	E10-1074	E11-1074
M4.5X0.75	20X7mm	E10-1026	E11-1026	M24X3	55X22mm	E10-1075	E11-1075
M5X0.5	20X5mm	E10-1027	E11-1027	M25X1.5	55X16mm	E10-1076	E11-1076
M5X0.8	20X7mm	E10-1028	E11-1028	M25X2	55X16mm	E10-1077	E11-1077
M5.5X0.5	20X5mm	E10-1029	E11-1029	M27X1	65X18mm	E10-1078	E11-1078
M6X0.75	20X7mm	E10-1030	E11-1030	M27X1.5	65X18mm	E10-1079	E11-1079
M6X1	20X7mm	E10-1031	E11-1031	M27X2	65X18mm	E10-1080	E11-1080
M7X0.75	25X9mm	E10-1032	E11-1032	M27X3	65X25mm	E10-1081	E11-1081
M7X1	25x9mm	E10-1033	E11-1033	M28X1	65X18mm	E10-1082	E11-1082
M8X0.75	25X9mm	E10-1034	E11-1034	M28X1.5	65X18mm	E10-1083	E11-1083
M8X	25X9mm	E10-1035	E11-1035	M28X2	65X18mm	E10-1084	E11-1084
M8X1.25	25X9mm	E10-1036	E11-1036	M30X1	65X18mm	E10-1085	E11-1085
M9X0.75	25X9mm	E10-1037	E11-1037	M30X1.5	65X18mm	E10-1086	E11-1086
M9X	25X9mm	E10-1038	E11-1038	M30X2	65X18mm	E10-1087	E11-1087
M9X1.25	25X9mm	E10-1039	E11-1039	M30X3	65X25mm	E10-1088	E11-1088
M10X0.75	30X11mm	E10-1040	E11-1040	M30X3.5	65X25mm	E10-1089	E11-1089
M10X1	30X11mm	E10-1041	E11-1041	M33X1.5	65X18mm	E10-1090	E11-1090
M10X1.25	30X11mm	E10-1042	E11-1042	M33X2	65X18mm	E10-1091	E11-1091
M10X1.5	30X11mm	E10-1043	E11-1043	M33X3	65X25mm	E10-1092	E11-1092
M11X0.75	30X11mm	E10-1044	E11-1044	M33X3.5	65X25mm	E10-1093	E11-1093
M11X1.25	30X11mm	E10-1045	E11-1045	M35X1.5	65X18mm	E10-1094	E11-1094
M11X1.5	30X11mm	E10-1046	E11-1046	M36X1.5	65X18mm	E10-1095	E11-1095
M12X1	38X10mm	E10-1047	E11-1047	M36X2	65X18mm	E10-1096	E11-1096
M12X1.25	38x10mm	E10-1048	E11-1048	M36X3	65X25mm	E10-1097	E11-1097
M12X1.5	38X10mm	E10-1049	E11-1049	M36X4	65X25mm	E10-1098	E11-1098

MACHINE AND HAND ROUND THREAD DIES

ISO-2568

High Speed Steel or Alloy Tool Steel



Size	Outside	HSS Model No.	9CrSi Model No.	Size	Outside	HSS Model No.	9CrSi Model No.
M39X1.5	75X20mm	E10-1099	E11-1099	NO.3-56UNF	16X5mm	E12-1007	E13-1007
M39X2	75X20mm	E10-1100	E11-1100	NO.4-40UNC	20X5mm	E12-1008	E13-1008
M39X3	75X30mm	E10-1101	E11-1101	NO.4-48UNF	20X5mm	E12-1009	E13-1009
M39X4	75X30mm	E10-1102	E11-1102	NO.5-40UNC	20X5mm	E12-1010	E13-1010
M40X1.5	75X20mm	E10-1103	E11-1103	NO.5-44UNF	20X5mm	E12-1011	E13-1011
M40X2	75x20mm	E10-1104	E11-1104	NO.6-32UNC	20X7mm	E12-1012	E13-1012
M40X3	75X30mm	E10-1105	E11-1105	NO.6-40UNF	20X5mm	E12-1013	E13-1013
M42X1.5	75X20mm	E10-1106	E11-1106	NO.8-32UNC	20X7mm	E12-1014	E13-1014
M42X2	75X20mm	E10-1107	E11-1107	NO.8-36UNF	20X7mm	E12-1015	E13-1015
M42X3	75X30mm	E10-1108	E11-1108	NO.10-24UNC	20X7mm	E12-1016	E13-1016
M42X4	75X30mm	E10-1109	E11-1109	NO.10-32UNF	20X7mm	E12-1017	E13-1017
M42X4.5	75X30mm	E10-1110	E11-1110	NO.12-24UNC	20X7mm	E12-1018	E13-1018
M45X1.5	90X22mm	E10-1111	E11-1111	NO.12-28UNF	20X7mm	E12-1019	E13-1019
M45X2	90X22mm	E10-1112	E11-1112	1/4-20UNC	20X7mm	E12-1020	E13-1020
M45X3	90X36mm	E10-1113	E11-1113	1/4-28UNF	20X7mm	E12-1021	E13-1021
M45X4	90X36mm	E10-1114	E11-1114	5/16-18UNC	25X9mm	E12-1022	E13-1022
M45X4.5	90X36mm	E10-1115	E11-1115	5/16-24UNF	25X9mm	E12-1023	E13-1023
M48X1.5	90X22mm	E10-1116	E11-1116	3/8-16UNC	30X11mm	E12-1024	E13-1024
M48X2	90x22mm	E10-1117	E11-1117	3/8-24UNF	30X11mm	E12-1025	E13-1025
M48X3	90X36mm	E10-1118	E11-1118	7/16-14UNC	30X11mm	E12-1026	E13-1026
M48X4	90X36mm	E10-1119	E11-1119	7/16-20UNF	30X11mm	E12-1027	E13-1027
M48X5	90X36mm	E10-1120	E11-1120	1/2-13UNC	38X14mm	E12-1028	E13-1028
M50X1.5	90X22mm	E10-1121	E11-1121	1/2-20UNF	38X10mm	E12-1029	E13-1029
M50X2	90X22mm	E10-1122	E11-1122	9/16-12UNC	38X14mm	E12-1030	E13-1030
M50X3	90X36mm	E10-1123	E11-1123	9/16-18UNF	38X10mm	E12-1031	E13-1031
M52X1.5	90X22mm	E10-1124	E11-1124	5/8-11UNC	45X18mm	E12-1032	E13-1032
M52X2	90X22mm	E10-1125	E11-1125	5/8-18UNF	45X14mm	E12-1033	E13-1033
M52X3	90X36mm	E10-1126	E11-1126	3/4-10UNC	45X18mm	E12-1034	E13-1034
M52X4	90X36mm	E10-1127	E11-1127	3/4-16UNF	45X14mm	E12-1035	E13-1035
M52X5	90X36mm	E10-1128	E11-1128	7/8-9UNC	55X22mm	E12-1036	E13-1036
M55X1.5	105X22mm	E10-1129	E11-1129	7/8-14UNF	55X16mm	E12-1037	E13-1037
M55X2	105X22mm	E10-1130	E11-1130	1-8UNC	55X22mm	E12-1038	E13-1038
M55X3	105X36mm	E10-1131	E11-1131	1-12UNF	55X16mm	E12-1039	E13-1039
M55X4	105X36mm	E10-1132	E11-1132	1-1/8-7UNC	65X25mm	E12-1040	E13-1040
M56X1.5	105X22mm	E10-1133	E11-1133	1-1/8-12UNF	65X18mm	E12-1041	E13-1041
M56X2	105X22mm	E10-1134	E11-1134	1-1/4-7UNC	65X25mm	E12-1042	E13-1042
M56X3	105X36mm	E10-1135	E11-1135	1-1/4-12UNF	65X18mm	E12-1043	E13-1043
M56X4	105X36mm	E10-1136	E11-1136	1-3/8-6UNC	65X25mm	E12-1044	E13-1044
M56X5.5	105X36mm	E10-1137	E11-1137	1-3/8-12UNF	65X18mm	E12-1045	E13-1045
M60X5.5	105X36mm	E10-1138	E11-1138	1-1/2-6UNC	75X30mm	E12-1046	E13-1046
M64X6	120X36mm	E10-1139	E11-1139	1-1/2-12UNF	75X20mm	E12-1047	E13-1047
M68X6	120X36mm	E10-1140	E11-1140	1-3/4-5UNC	90X36mm	E12-1048	E13-1048
NO.0-80UNF	16X5mm	E12-1001	E13-1001	2-4-1/2UNC	90X36mm	E12-1049	E13-1049
NO.1-64UNC	16X5mm	E12-1002	E13-1002	2-1/4-4-1/2UNC	105X36mm	E12-1050	E13-1050
NO.1-72UNF	16X5mm	E12-1003	E13-1003	2-1/2-4UNC	120X36mm	E12-1051	E13-1051
NO.2-56UNC	16X5mm	E12-1004	E13-1004	2-3/4-4UNC	120X36mm	E12-1052	E13-1052
NO.2-64UNF	16X5mm	E12-1005	E13-1005				
NO.3-48UNC	16X5mm	E12-1006	E13-1006				

GB standard TAP

DIN standard TAP

BS1127 standard

NFE-74001 standard

MACHINE AND HAND ROUND THREAD DIES

ISO-4230

High Speed Steel or Alloy Tool Steel



Size	Outside	HSS Model No.	9CrSi Model No.	Size	Outside	HSS Model No.	9CrSi Model No.
R1/16	30X11mm	E14-1001	E15-1001	R3/4	55X22mm	E14-1006	E15-1006
R1/8	30X11mm	E14-1002	E15-1002	R1	65X25mm	E14-1007	E15-1007
R1/4	38X14mm	E14-1003	E15-1003	R1-1/4	75X30mm	E14-1008	E15-1008
R3/8	45X18mm	E14-1004	E15-1004	R1-1/2	90X36mm	E14-1009	E15-1009
R1/2	55X22mm	E14-1005	E15-1005	R2	105X36mm	E14-1010	E15-1010

ISO-4231

High Speed Steel or Alloy Tool Steel



Size	Outside	HSS Model No.	9CrSi Model No.	Size	Outside	HSS Model No.	9CrSi Model No.
G1/16	25X9mm	E16-1001	E17-1001	G7/8	65X18mm	E16-1008	E17-1008
G1/8	30X11mm	E16-1002	E17-1002	G1	65X18mm	E16-1009	E17-1009
G1/4	38X10mm	E16-1003	E17-1003	G1-1/4	75X20mm	E16-1010	E17-1010
G3/8	45X14mm	E16-1004	E17-1004	G1-1/2	90X22mm	E16-1011	E17-1011
G1/2	45X14mm	E16-1005	E17-1005	G1-3/4	105X22mm	E16-1012	E17-1012
G5/8	55X16mm	E16-1006	E17-1006	G2	105X22mm	E16-1013	E17-1013
G3/4	55X16mm	E16-1007	E17-1007	G2-1/4	120X22mm	E16-1014	E17-1014

ISO-2568

High Speed Steel or Alloy Tool Steel



Size	Outside	HSS Model No.	9CrSi Model No.	Size	Outside	HSS Model No.	9CrSi Model No.
1/8-40BSW	20X5mm	E18-1001	E19-1001	7/8-9BSW	55X22mm	E18-1024	E19-1024
3/16-24BSW	20X7mm	E18-1002	E19-1002	7/8-11BSF	55X22mm	E18-1025	E19-1025
3/16-32BSF	20X7mm	E18-1003	E19-1003	1-8BSW	55X22mm	E18-1026	E19-1026
7/32-28BSF	20X7mm	E18-1004	E19-1004	1-10BSF	55X22mm	E18-1027	E19-1027
1/4-20BSW	25X9mm	E18-1005	E19-1005	1-1/8-7BSW	65X25mm	E18-1028	E19-1028
1/4-26BSF	25X9mm	E18-1006	E19-1006	1-1/8-9BSF	65X25mm	E18-1029	E19-1029
9/32-26BSF	25X9mm	E18-1007	E19-1007	1-1/4-7BSW	65X25mm	E18-1030	E19-1030
5/16-18BSW	25X9mm	E18-1008	E19-1008	1-1/4-9BSF	65X25mm	E18-1031	E19-1031
5/16-22BSF	25X9mm	E18-1009	E19-1009	1-1/2-6BSW	75X30mm	E18-1032	E19-1032
3/8-16BSW	30X11mm	E18-1010	E19-1010	1-1/2-8BSF	75X30mm	E18-1033	E19-1033
3/8-20BSF	30X11mm	E18-1011	E19-1011	1-5/8-5BSW	75X30mm	E18-1034	E19-1034
7/16-14BSW	30X11mm	E18-1012	E19-1012	1-5/8-8BSF	75X30mm	E18-1035	E19-1035
7/16-18BSF	30X11mm	E18-1013	E19-1013	1-3/4-5BSW	90X36mm	E18-1036	E19-1036
1/2-12BSW	38X14mm	E18-1014	E19-1014	1-3/4-7BSF	90X36mm	E18-1037	E19-1037
1/2-16BSF	38X10mm	E18-1015	E19-1015	2-4-1/2BSW	90X36mm	E18-1038	E19-1038
9/16-12BSW	38X14mm	E18-1016	E19-1016	2-7BSF	90X36mm	E18-1039	E19-1039
9/16-16BSF	38X10mm	E18-1017	E19-1017	2-1/4-4BSW	105X36mm	E18-1040	E19-1040
5/8-11BSW	45X18mm	E18-1018	E19-1018	2-1/4-6BSF	105X36mm	E18-1041	E19-1041
5/8-14BSF	45X14mm	E18-1019	E19-1019	2-1/2-4BSW	120X36mm	E18-1042	E19-1042
11/16-11BSW	45X18mm	E18-1020	E19-1020	2-1/2-6BSF	120X36mm	E18-1043	E19-1043
11/16-14BSF	45X14mm	E18-1021	E19-1021	2-3/4-3-1/2BSW	120X36mm	E18-1044	E19-1044
3/4-10BSW	45X18mm	E18-1022	E19-1022	2-3/4-6BSF	120X36mm	E18-1045	E19-1045
3/4-12BSF	45X14mm	E18-1023	E19-1023				

MACHINE AND HAND ROUND THREAD DIES

DIN-223

High Speed Steel or Alloy Tool Steel



Size	Outside	HSS Model No.	9CrSi Model No.	Size	Outside	HSS Model No.	9CrSi Model No.
M1X0.2	16X5mm	F10-1001	F11-1001	M5X0.75	20X7mm	F10-1050	F11-1050
M1X0.25	16x5mm	F10-1002	F11-1002	M5X0.8	20X7mm	F10-1051	F11-1051
M1.1X0.2	16X5mm	F10-1003	F11-1003	M5.5X0.35	20X5mm	E10-1052	F11-1052
M1.1X0.25	16X5mm	F10-1004	F11-1004	M5.5X0.5	20X5mm	F10-1053	F11-1053
M1.2X0.2	16X5mm	F10-1005	F11-1005	M5.5X0.75	20X7mm	F10-1054	F11-1054
M1.2X0.25	16X5mm	F10-1006	F11-1006	M5.5X0.9	20X7mm	F10-1055	F11-1055
M1.4X0.2	16X5mm	F10-1007	F11-1007	M6X0.35	20X5mm	F10-1056	F11-1056
M1.4X0.25	16X5mm	F10-1008	F11-1008	M6X0.5	20X5mm	F10-1057	F11-1057
M1.4X0.3	16X5mm	F10-1009	F11-1009	M6X0.75	20X7mm	F10-1058	F11-1058
M1.6X0.2	16X5mm	F10-1010	F11-1010	M6X1	20X7mm	F10-1059	F11-1059
M1.6X0.25	16X5mm	F10-1011	F11-1011	M7X0.5	25X9mm	F10-1060	F11-1060
M1.6X0.35	16X5mm	F10-1012	F11-1012	M7X0.75	25X9mm	F10-1061	F11-1061
M1.7X0.2	16X5mm	F10-1013	F11-1013	M7X1	25X9mm	F10-1062	F11-1062
M1.7X0.25	16X5mm	F10-1014	F11-1014	M8X0.5	25X9mm	F10-1063	F11-1063
M1.7X0.35	16X5mm	F10-1015	F11-1015	M8X0.75	25X9mm	F10-1064	F11-1064
M1.8X0.2	16X5mm	F10-1016	F11-1016	M8X	25X9mm	F10-1065	F11-1065
M1.8X0.25	16X5mm	F10-1017	F11-1017	M8X1.25	25X9mm	F10-1066	F11-1066
M1.8X0.35	16X5mm	F10-1018	F11-1018	M9X0.5	25X9mm	F10-1067	F11-1067
M2X0.2	16X5mm	F10-1019	F11-1019	M9X0.75	25X9mm	F10-1068	F11-1068
M2X0.25	16X5mm	F10-1020	F11-1020	M9X	25X9mm	F10-1069	F11-1069
M2X0.35	16X5mm	F10-1021	F11-1021	M9X1.25	25X9mm	F10-1070	F11-1070
M2X0.4	16X5mm	F10-1022	F11-1022	M10X0.5	30X11mm	F10-1071	F11-1071
M2.2X0.25	16X5mm	F10-1023	F11-1023	M10X0.75	30X11mm	F10-1072	F11-1072
M2.2X0.35	16X5mm	F10-1024	F11-1024	M10X1	30X11mm	F10-1073	F11-1073
M2.2X0.45	16X5mm	F10-1025	F11-1025	M10X1.25	30X11mm	F10-1074	F11-1074
M2.3X0.25	16X5mm	F10-1026	F11-1026	M10X1.5	30X11mm	F10-1075	F11-1075
M2.3X0.35	16X5mm	F10-1027	F11-1027	M11X0.5	30X11mm	F10-1076	F11-1076
M2.3X0.4	16X5mm	F10-1028	E11-1028	M11X0.75	30X11mm	F10-1077	F11-1077
M2.5X0.25	16X5mm	F10-1029	F11-1029	M11X1	30X11mm	F10-1078	F11-1078
M2.5X0.35	16X5mm	F10-1030	F11-1030	M1X1.5	30X11mm	F10-1079	F11-1079
M2.5X0.45	16X5mm	F10-1031	F11-1031	M12X0.5	38X10mm	F10-1080	F11-1080
M2.6X0.25	16X5mm	F10-1032	F11-1032	M12X0.75	38X10mm	F10-1081	F11-1081
M2.6X0.35	16X5mm	F10-1033	F11-1033	M12X1	38X10mm	F10-1082	F11-1082
M2.6X0.45	16X5mm	F10-1034	E11-1034	M12X1.25	38X10mm	F10-1083	F11-1083
M3X0.25	20X5mm	F10-1035	F11-1035	M12X1.5	38X10mm	F10-1084	F11-1084
M3X0.35	20X5mm	F10-1036	F11-1036	M12X1.75	38X14mm	F10-1085	F11-1085
M3X0.5	20x5mm	F10-1037	F11-1037	M13X0.5	38X10mm	F10-1086	F11-1086
M3.5X0.25	20X5mm	F10-1038	F11-1038	M13X0.75	38X10mm	F10-1087	F11-1087
M3.5X0.35	20X5mm	F10-1039	F11-1039	M13X1	38X10mm	F10-1088	F11-1088
M3.5X0.5	20X5mm	F10-1040	F11-1040	M13X1.5	38X10mm	F10-1089	F11-1089
M3.5X0.6	20X5mm	F10-1041	F11-1041	M14X0.5	38X10mm	F10-1090	F11-1090
M4X0.35	20X5mm	F10-1042	F11-1042	M14X0.75	38X10mm	F10-1091	F11-1091
M4X0.5	20X5mm	F10-1043	F11-1043	M14X1	38X10mm	F10-1092	F11-1092
M4X0.7	20X5mm	F10-1044	F11-1044	M14X1.25	38X10mm	F10-1093	F11-1093
M4.5X0.35	20X5mm	F10-1045	F11-1045	M14X1.5	38x10mm	F10-1094	F11-1094
M4.5X0.5	20X5mm	F10-1046	F11-1046	M14X2	38X14mm	F10-1095	F11-1095
M4.5X0.75	20X7mm	F10-1047	F11-1047	M15X0.5	38X10mm	F10-1096	F11-1096
M5X0.35	20X5mm	F10-1048	F11-1048	M15X0.75	38X10mm	F10-1097	F11-1097
M5X0.5	20X5mm	F10-1049	F11-1049	M15X1	38X10mm	F10-1098	F11-1098

MACHINE AND HAND ROUND THREAD DIES

Size	Outside	HSS Model No.	9CrSi Model No.	Size	Outside	HSS Model No.	9CrSi Model No.
M15X1.5	38X10mm	F10-1099	F11-1099	M26X0.75	55X16mm	F10-1157	F11-1157
M16X0.5	45X14mm	F10-1100	F11-1100	M26X1	55X16mm	F10-1158	F11-1158
M16X0.75	45X14mm	F10-1101	F11-1101	M26X1.5	55X16mm	F10-1159	F11-1159
M16X1	45X14mm	F10-1102	F11-1102	M26X2	55X16mm	F10-1160	F11-1160
M16X1.25	45X14mm	F10-1103	F11-1103	M27X0.5	65X18mm	F10-1161	F11-1161
M16X1.5	45X14mm	F10-1104	F11-1104	M27X0.75	65X18mm	F10-1162	F11-1162
M16X2	45X18mm	F10-1105	F11-1105	M27X1	65X18mm	F10-1163	F11-1163
M17X0.5	45X14mm	F10-1106	F11-1106	M27X1.5	65X18mm	F10-1164	F11-1164
M17X0.75	45X14mm	F10-1107	F11-1107	M27X2	65X18mm	F10-1165	F11-1165
M17X1	45X14mm	F10-1108	F11-1108	M27X3	65X25mm	F10-1166	F11-1166
M17X1.5	45X14mm	F10-1109	F11-1109	M28X0.5	65X18mm	F10-1167	F11-1167
M18X0.5	45X14mm	F10-1110	F11-1110	M28X0.75	65X18mm	F10-1168	F11-1168
M18X0.75	45X14mm	F10-1111	F11-1111	M28X1	65X18mm	F10-1169	F11-1169
M18X1	45X14mm	F10-1112	F11-1112	M28X1.5	65X18mm	F10-1170	F11-1170
M18X1.25	45X14mm	F10-1113	F11-1113	M28X2	65X18mm	F10-1171	F11-1171
M18X1.5	45X14mm	F10-1114	F11-1114	M30X0.5	65X18mm	F10-1172	F11-1172
M18X2	45X14mm	F10-1115	F11-1115	M30X0.75	65X18mm	F10-1173	F11-1173
M18X2.5	45X18mm	F10-1116	F11-1116	M30X1	65X18mm	F10-1174	F11-1174
M19X0.5	45X14mm	F10-1117	F11-1117	M30X1.5	65X18mm	F10-1175	F11-1175
M19X0.75	45X14mm	F10-1118	F11-1118	M30X2	65X18mm	F10-1176	F11-1176
M19X1	45X14mm	F10-1119	F11-1119	M30X3	65X25mm	F10-1177	F11-1177
M19X1.5	45X14mm	F10-1120	F11-1120	M30X3.5	65X25mm	F10-1178	F11-1178
M19X2	45X14mm	F10-1121	F11-1121	M32X1	65X18mm	F10-1179	F11-1179
M20X0.5	45X14mm	F10-1122	F11-1122	M32X1.5	65X18mm	F10-1180	F11-1180
M20X0.75	45X14mm	F10-1123	F11-1123	M32X2	65X18mm	F10-1181	F11-1181
M20X1	45X14mm	F10-1124	F11-1124	M33X1	65X18mm	F10-1182	F11-1182
M20X1.25	45X14mm	F10-1125	F11-1125	M33X1.5	65X18mm	F10-1183	F11-1183
M20X1.5	45X14mm	F10-1126	F11-1126	M33X2	65X18mm	F10-1184	F11-1184
M20X2	45X14mm	F10-1127	F11-1127	M33X3	65X25mm	F10-1185	F11-1185
M20X2.5	45X18mm	F10-1128	F11-1128	M33X3.5	65X25mm	F10-1186	F11-1186
M21X0.5	45X14mm	F10-1129	F11-1129	M34X1	65X18mm	F10-1187	F11-1187
M21X0.75	45X14mm	F10-1130	F11-1130	M34X1.5	65X18mm	F10-1188	F11-1188
M21X1	45X14mm	F10-1131	F11-1131	M34X2	65X18mm	F10-1189	F11-1189
M21X1.5	45X14mm	F10-1132	F11-1132	M34X3	65X25mm	F10-1190	F11-1190
M21X2	45X14mm	F10-1133	F11-1133	M35X1	65X18mm	F10-1191	F11-1191
M22X0.5	55X16mm	F10-1134	F11-1134	M35X1.5	65X18mm	F10-1192	F11-1192
M22X0.75	55X16mm	F10-1135	F11-1135	M35X2	65X18mm	F10-1193	F11-1193
M22X1	55X16mm	F10-1136	F11-1136	M35X3	65X25mm	F10-1194	F11-1194
M22X1.5	55X16mm	F10-1137	F11-1137	M36X1	65X18mm	F10-1195	F11-1195
M22X2	55X16mm	F10-1138	F11-1138	M36X1.5	65X18mm	F10-1196	F11-1196
M22X2.5	55X22mm	F10-1139	F11-1139	M36X2	65X18mm	F10-1197	F11-1197
M23X0.5	55X16mm	F10-1140	F11-1140	M36X3	65X25mm	F10-1198	F11-1198
M23X0.75	55X16mm	F10-1141	F11-1141	M36X4	65X25mm	F10-1199	F11-1199
M23X1	55X16mm	F10-1142	F11-1142	M38X1	75X20mm	F10-1200	F11-1200
M23X1.5	55X16mm	F10-1143	F11-1143	M38X1.5	75X20mm	F10-1201	F11-1201
M23X1	55X16mm	F10-1144	F11-1144	M38X2	75X20mm	F10-1202	F11-1202
M24X0.5	55X16mm	F10-1145	F11-1145	M38X3	75X30mm	F10-1203	F11-1203
M24X0.75	55X16mm	F10-1146	F11-1146	M39X1	75X20mm	F10-1204	F11-1204
M24X1	55X16mm	F10-1147	F11-1147	M39X1.5	75X20mm	F10-1205	F11-1205
M24X1.5	55X16mm	F10-1148	F11-1148	M39X2	75X20mm	F10-1206	F11-1206
M24X2	55X16mm	F10-1149	F11-1149	M39X3	75X30mm	F10-1207	F11-1207
M24X3	55X22mm	F10-1150	F11-1150	M39X4	75X30mm	F10-1208	F11-1208
M25X0.5	55X16mm	F10-1151	F11-1151	M40X1	75X20mm	F10-1209	F11-1209
M25X0.75	55X16mm	F10-1152	F11-1152	M40X1.5	75X20mm	F10-1210	F11-1210
M25X1	55X16mm	F10-1153	F11-1153	M40X2	75X20mm	F10-1211	F11-1211
M25X1.5	55X16mm	F10-1154	F11-1154	M40X3	75X30mm	F10-1212	F11-1212
M25X2	55X16mm	F10-1155	F11-1155	M42X1	75X20mm	F10-1213	F11-1213
M26X0.5	55X16mm	F10-1156	F11-1156	M42X1.5	75X20mm	F10-1214	F11-1214

MACHINE AND HAND ROUND THREAD DIES

DIN-223 UNC/UNF



High Speed Steel or Alloy Tool Steel

Size	Outside	HSS Model No.	9CrSi Model No.	Size	Outside	HSS Model No.	9CrSi Model No.
M42X2	75X20mm	F10-1215	F11-1215	M68X6	120X36mm	F10-1267	F11-1267
M42X3	75X30mm	F10-1216	F11-1216	NO.0-80NF	16X5mm	F12-1001	F13-1001
M42X4.5	75X30mm	F10-1217	F11-1217	NO.1-64NC	16X5mm	F12-1002	F13-1002
M45X1	90X22mm	F10-1218	F11-1218	NO.1-72NF	16X5mm	F12-1003	F13-1003
M45X1.5	90X22mm	F10-1219	F11-1219	NO.2-56NC	16X5mm	F12-1004	F13-1004
M45X2	90X22mm	F10-1220	F11-1220	NO.2-64NF	16X5mm	F12-1005	F13-1005
M45X3	90X36mm	F10-1221	F11-1221	NO.3-48NC	16X5mm	F12-1006	F13-1006
M45X4.5	90X36mm	F10-1222	F11-1222	NO.3-56NF	16X5mm	F12-1007	F13-1007
M48X1	90X22mm	F10-1223	F11-1223	NO.4-40NC	20X5mm	F12-1008	F13-1008
M48X1.5	90x22mm	F10-1224	F11-1224	NO.4-48NF	20X5mm	F12-1009	F13-1009
M48X2	90x22mm	F10-1225	F11-1225	NO.5-40NC	20X5mm	F12-1010	F13-1010
M48X3	90X36mm	F10-1226	F11-1226	NO.5-44NF	20X5mm	F12-1011	F13-1011
M48X4	90X36mm	F10-1227	F11-1227	NO.6-32NC	20X5mm	F12-1012	F13-1012
M48X5	90X36mm	F10-1228	F11-1228	NO.6-40NF	20X5mm	F12-1013	F13-1013
M50X1	90X22mm	F10-1229	F11-1229	NO.8-32NC	20X5mm	F12-1014	F13-1014
M50X1.5	90X22mm	F10-1230	F11-1230	NO.8-36NF	20X5mm	F12-1015	F13-1015
M50X2	90x22mm	F10-1231	F11-1231	NO.10-24NC	20X7mm	F12-1016	F13-1016
M50X3	90X36mm	F10-1232	F11-1232	NO.10-32NF	20X7mm	F12-1017	F13-1017
M50X4	90X36mm	F10-1233	F11-1233	NO.12-24NC	20X7mm	F12-1018	F13-1018
M52X1	90X22mm	F10-1234	F11-1234	NO.12-28NF	20X7mm	F12-1019	F13-1019
M52X1.5	90X22mm	F10-1235	F11-1235	1/4-20NC	20X7mm	F12-1020	F13-1020
M52X2	90X22mm	F10-1236	F11-1236	1/4-28NF	20X7mm	F12-1021	F13-1021
M52X3	90X36mm	F10-1237	F11-1237	5/16-18NC	25X9mm	F12-1022	F13-1022
M52X4	90X36mm	F10-1238	F11-1238	5/16-24NF	25X9mm	F12-1023	F13-1023
M52X5	90X36mm	F10-1239	F11-1239	3/8-16NC	30X11mm	F12-1024	F13-1024
M55X2	105X22mm	F10-1240	F11-1240	3/8-24NF	30X11mm	F12-1025	F13-1025
M55X3	105X36mm	F10-1241	F11-1241	7/16-14NC	30X11mm	F12-1026	F13-1026
M55X4	105X36mm	F10-1242	F11-1242	7/16-20NF	30X11mm	F12-1027	F13-1027
M56X2	105X22mm	F10-1243	F11-1243	1/2-13NC	38X14mm	F12-1028	E13-1028
M56X3	105X36mm	F10-1244	F11-1244	1/2-20NF	38X10mm	F12-1029	F13-1029
M56X4	105X36mm	F10-1245	F11-1245	9/16-12NC	38X14mm	F12-1030	F13-1030
M56X5.5	105X36mm	F10-1246	F11-1246	9/16-18NF	38X10mm	F12-1031	F13-1031
M58X2	105X22mm	F10-1247	F11-1247	5/8-11NC	45X18mm	F12-1032	F13-1032
M58X3	105X36mm	F10-1248	F11-1248	5/8-18NF	45X14mm	F12-1033	F13-1033
M58X4	105X36mm	F10-1249	F11-1249	3/4-10NC	45X18mm	F12-1034	F13-1034
M60X2	105X22mm	F10-1250	F11-1250	3/4-16NF	45X14mm	F12-1035	F13-1035
M60X3	105X36mm	F10-1251	F11-1251	7/8-9NC	55X22mm	F12-1036	F13-1036
M60X4	105X36mm	F10-1252	F11-1252	7/8-14NF	55X16mm	F12-1037	F13-1037
M60X5.5	105X36mm	F10-1253	F11-1253	1-8NC	55X22mm	F12-1038	F13-1038
M62X2	105X22mm	F10-1254	F11-1254	1-12NF	55x16mm	F12-1039	F13-1039
M62X3	105X36mm	F10-1255	F11-1255	1-14NS	55X16mm	F12-1040	F13-1040
M62X4	105X36mm	F10-1256	F11-1256	1-1/8-7NC	65X25mm	F12-1041	F13-1041
M64X2	120X22mm	F10-1257	F11-1257	1-1/8-12NF	65X18mm	F12-1042	F13-1042
M64X3	120X36mm	F10-1258	F11-1258	1-1/4-7NC	65X25mm	F12-1043	F13-1043
M64X4	120X36mm	F10-1259	F11-1259	1-1/4-12NF	65X18mm	F12-1044	F13-1044
M64X6	120X36mm	F10-1260	F11-1260	1-3/8-6NC	65X25mm	F12-1045	F13-1045
M65X2	120X22mm	F10-1261	F11-1261	1-3/8-12NF	65X18mm	F12-1046	F13-1046
M65X3	120X36mm	F10-1262	F11-1262	1-1/2-6NC	75X30mm	F12-1047	F13-1047
M65X4	120X36mm	F10-1263	F11-1263	1-1/2-12NF	75X20mm	F12-1048	F13-1048
M68X2	120X22mm	F10-1264	F11-1264	1-3/4-5NC	90X36mm	F12-1049	F13-1049
M68X3	120X36mm	F10-1265	F11-1265	2-4-1/2NC	90X36mm	F12-1050	F13-1050
M68X4	120X36mm	F10-1266	F11-1266				

MACHINE AND HAND ROUND THREAD DIES

DIN-223 BSW

High Speed Steel or Alloy Tool Steel



Size	Outside	HSS Model No.	9CrSi Model No.	Size	Outside	HSS Model No.	9CrSi Model No.
1/16-60BSW	16X5mm	F14-1001	F15-1001	1-3/4-5BSW	90X36mm	F14-1022	F15-1022
3/32-48BSW	16X5mm	F14-1002	F15-1002	1-7/8-4-1/2BSW	90X36mm	F14-1023	F15-1023
1/8-40BSW	20X5mm	F14-1003	F15-1003	2-4-1/2BSW	90x36mm	F14-1024	F15-1024
5/32-32BSW	20X5mm	F14-1004	F15-1004	3/16-32BSF	20X7mm	F14-1025	F15-1025
3/16-24BSW	20X7mm	F14-1005	F15-1005	1/4-26BSF	20X7mm	F14-1026	F15-1026
7/32-24BSW	20X7mm	F14-1006	F15-1006	5/16-22BSF	25X9mm	F14-1027	F15-1027
1/4-20BSW	20X7mm	F14-1007	F15-1007	3/8-20BSF	30X11mm	F14-1028	F15-1028
5/16-18BSW	25X9mm	F14-1008	F15-1008	7/16-18BSF	30X11mm	F14-1029	F15-1029
3/8-16BSW	30X11mm	F14-1009	F15-1009	1/2-16BSF	38X10mm	F14-1030	F15-1030
7/16-14BSW	30X11mm	F14-1010	F15-1010	9/16-16BSF	38X10mm	F14-1031	F15-1031
1/2-12BSW	38X14mm	F14-1011	F15-1011	5/8-14BSF	45X14mm	F14-1032	F15-1032
9/16-12BSW	38X14mm	F14-1012	F15-1012	3/4-12BSF	45X14mm	F14-1033	F15-1033
5/8-11BSW	45X18mm	F14-1013	F15-1013	7/8-11BSF	55X16mm	F14-1034	F15-1034
3/4-10BSW	45X18mm	F14-1014	F15-1014	1-10BSF	55X16mm	F14-1035	F15-1035
7/8-9BSW	55X22mm	F14-1015	F15-1015	1-1/8-9BSF	65X18mm	F14-1036	F15-1036
1-8BSW	55X22mm	F14-1016	F15-1016	1-1/4-9BSF	65X18mm	F14-1037	F15-1037
1-1/8-7BSW	65X25mm	F14-1017	F15-1017	1-3/8-8BSF	65X18mm	F14-1038	F15-1038
1-1/4-7BSW	65X25mm	F14-1018	F15-1018	1-1/2-8BSF	75X20mm	F14-1039	F15-1039
1-3/8-6BSW	65X25mm	F14-1019	F15-1019	1-5/8-8BSF	75X20mm	F14-1040	F15-1040
1-1/2-6BSW	75X30mm	F14-1020	F15-1020	1-3/4-7BSF	90X22mm	F14-1041	F15-1041
1-5/8-5BSW	75X30mm	F14-1021	F15-1021	2"-7BSF	90X22mm	F14-1042	F15-1042

DIN-223

High Speed Steel or Alloy Tool Steel



Size	Outside	HSS Model No.	9CrSi Model No.	Size	Outside	HSS Model No.	9CrSi Model No.
NPT1/16-27	25X9mm	F16-1001	F17-1001	NPT3/4-14	55X22mm	F16-1006	F17-1006
NPT1/8-27	30X11mm	F16-1002	F17-1002	NPT1-11-1/2	65X25mm	F16-1007	F17-1007
NPT1/4-18	38X14mm	F16-1003	F17-1003	NPT1-1/4-11-1/2	75x30mm	F16-1008	F17-1008
NPT3/8-18	45X14mm	F16-1004	F17-1004	NPT1-1/2-11-1/2	90X36mm	F16-1009	F17-1009
NPT1/2-14	45X18mm	F16-1005	F17-1005	NPT2-11-1/2	105x36mm	F16-1010	F17-1010

MACHINE AND HAND ROUND THREAD DIES

DIN-5159

High Speed Steel or Alloy Tool Steel



Size	Outside	HSS Model No.	9CrSi Model No.	Size	Outside	HSS Model No.	9CrSi Model No.
R1/16	30X11mm	F18-1001	F19-1001	R3/4	55X22mm	F18-1006	F19-1006
R1/8	30X11mm	F18-1002	F19-1002	R1	65X25mm	F18-1007	F19-1007
R1/4	38X14mm	F18-1003	F19-1003	R1-1/4	75X30mm	F18-1008	F19-1008
R3/8	45X18mm	F18-1004	F19-1004	R1-1/2	90X36mm	F18-1009	F19-1009
R1/2	55X22mm	F18-1005	F19-1005	R2	105X36mm	F18-1010	F19-1010

DIN-5158

High Speed Steel or Alloy Tool Steel



Size	Outside	HSS Model No.	9CrSi Model No.	Size	Outside	HSS Model No.	9CrSi Model No.
G1/16A	25X9mm	F20-1001	F21-1001	G1A	65X18mm	F20-1009	F21-1009
G1/8A	30X11mm	F20-1002	F21-1002	G1-1/8A	75X20mm	F20-1010	F21-1010
G1/4A	38X10mm	F20-1003	F21-1003	G1-1/4A	75X20mm	F20-1011	F21-1011
G3/8A	45X14mm	F20-1004	F21-1004	G1-1/2A	90X22mm	F20-1012	F21-1012
G1/2A	45X14mm	F20-1005	F21-1005	G1-3/4A	90X22mm	F20-1013	F21-1013
G5/8A	55X16mm	F20-1006	F21-1006	G2A	105X22mm	F20-1014	F21-1014
G3/4A	55X16mm	F20-1007	F21-1007	G2-1/4A	120X22mm	F20-1015	F21-1015
G7/8A	65X18mm	F20-1008	F21-1008				

HEXAGON DIE NUTS

DIN-382

High Speed Steel



Size	Outside	Model No.	Size	Outside	Model No.
M3X0.35	19X5mm	F22-1001	M24X3	50X22mm	F22-1043
M3X0.5	19X5mm	F22-1002	M26X1.5	60X18mm	F22-1044
M3.5X0.6	19X5mm	F22-1003	M27X1.5	60X18mm	F22-1045
M4X0.5	19X5mm	F22-1004	M27X2	60X18mm	F22-1046
M4X0.7	19X5mm	F22-1005	M27X3	60X25mm	F22-1047
M4.5X0.75	19X7mm	F22-1006	M28X1.5	60X18mm	F22-1048
M5X0.5	19X5mm	F22-1007	M30X1.5	60X18mm	F22-1049
M5X0.8	19X7mm	F22-1008	M30X2	60X18mm	F22-1050
M6X0.75	19X5mm	F22-1009	M30X3.5	60X25mm	F22-1051
M6X1	19X7mm	F22-1010	M32X1.5	60X18mm	F22-1052
M7X0.75	22X9mm	F22-1011	M33X1.5	60X18mm	F22-1053
M7X1	22X9mm	F22-1012	M33X2	60X18mm	F22-1054
M8X0.75	22X9mm	F22-1013	M33X3.5	60X25mm	F22-1055
MBX	22X9mm	F22-1014	M35X1.5	60X18mm	F22-1056
MBX1.25	22X9mm	F22-1015	M36X1.5	60X18mm	F22-1057
M9X	22X9mm	F22-1016	M36X2	60X18mm	F22-1058
M9X1.25	22X9mm	F22-1017	M36X3	60X25mm	F22-1059
M10X1	27X11mm	F22-1018	M36X4	60X25mm	F22-1060
M10X1.5	27X11mm	F22-1019	M38X1.5	70X20mm	F22-1061
M11X1	27x11mm	F22-1020	M39X1.5	70X20mm	F22-1062
MIX1.5	27X11mm	F22-1021	M39X2	70X20mm	F22-1063
M12X1	36X10mm	F22-1022	M39X3	70X30mm	F22-1064
M12X1.25	36X10mm	F22-1023	M39X4	70X30mm	F22-1065
M12X1.5	36x10mm	F22-1024	M40X1.5	70X20mm	F22-1066
M12X1.75	36X14mm	F22-1025	M40X2	70X20mm	F22-1067
M14X1	36X10mm	F22-1026	M42X1.5	70X20mm	F22-1068
M14X1.25	36X10mm	F22-1027	M42X2	70X20mm	F22-1069
M14X1.5	36X10mm	F22-1028	M42X3	70X30mm	F22-1070
M14X2	36X14mm	F22-1029	M42X4.5	70X30mm	F22-1071
M16X1.5	41X14mm	F22-1030	M45X1.5	85X22mm	F22-1072
M16X2	41X18mm	F22-1031	M45X2	85X22mm	F22-1073
M18X1.5	41X14mm	E22-1032	M45X3	85X36mm	F22-1074
M18X2	41X14mm	F22-1033	M45X4.5	85X36mm	F22-1075
M18X2.5	41X18mm	F22-1034	M48X1.5	85X22mm	F22-1076
M20X1.5	41X14mm	F22-1035	M48X2	85X22mm	F22-1077
M20X2	41X14mm	F22-1036	M48X3	85X36mm	F22-1078
M20X2.5	41X18mm	F22-1037	M48X5	85X36mm	F22-1079
M22X1.5	50X16mm	F22-1038	M50X1.5	85X22mm	F22-1080
M22X2	50X16mm	F22-1039	M52X1.5	85X22mm	F22-1081
M22X2.5	50X22mm	F22-1040	M52X2	85X22mm	F22-1082
M24X1.5	50X16mm	F22-1041	M52X3	85X36mm	F22-1083
M24X2	50X16mm	F22-1042	M52X5	85X36mm	F22-1084

HEXAGON DIE NUTS

High Speed Steel



Size	Outside	Model No.	Size	Outside	Model No.
1/8-40BSW	19X5mm	F23-1001	7/8-9BSW	50X22mm	F23-1011
3/16-24BSW	19X7mm	F23-1002	1-8BSW	50X22mm	F23-1012
1/4-20BSW	19X7mm	F23-1003	1-1/8-7BSW	60X25mm	F23-1013
5/16-18BSW	22X9mm	F23-1004	1-1/4-7BSW	60X25mm	F23-1014
3/8-16BSW	27X11mm	F23-1005	1-3/8-6BSW	60x25mm	F23-1015
7/16-14BSW	27X11mm	F23-1006	1-1/2-6BSW	70X30mm	F23-1016
1/2-12BSW	36X14mm	F23-1007	1-5/8-5BSW	70X30mm	F23-1017
9/16-12BSW	36X14mm	F23-1008	1-3/4-5BSW	85X36mm	F23-1018
5/8-11BSW	41X18mm	F23-1009	1-7/8-4-1/2BSW	85X36mm	F23-1019
3/4-10BSW	41X18mm	F23-1010	2-4-1/2BSW	85X36mm	F23-1020

High Speed Steel



Size	Outside	Model No.	Size	Outside	Model No.
G1/8-28	27X11mm	F24-1001	G1"-11	60X18mm	F24-1008
G1/4-19	27X11mm	F24-1002	G1-1/8-11	70X20mm	F24-1009
G3/8-19	36X14mm	F24-1003	G1-1/4-11	70X20mm	F24-1010
G1/2-14	36X14mm	F24-1004	G1-3/8-11	85X22mm	F24-1011
G5/8-14	50X16mm	F24-1005	G1-1/2-11	85X22mm	F24-1012
G3/4-14	50X16mm	F24-1006	G1-3/4-11	100X22mm	F24-1013
G7/8-14	60X18mm	F24-1007	G2"-11	100X22mm	F24-1014

MACHINE ROUND THREAD DIES

BS-1127MS/MF

High Speed Steel



Size	Outside	Model No.	Size	Outside	Model No.
M1X0.25	13/16x1/4	H10-1001	M30X3.5	3"x7/8	H10-1044
M1.2X0.25	13/16x1/4	H10-1002	M33X3.5	3"x7/8	H10-1045
M1.4X0.3	13/16x1/4	H10-1003	M36X4	3"x7/8	H10-1046
M1.6X0.35	13/16x1/4	H10-1004	M39X4	3"x7/8	H10-1047
M1.8X0.35	13/16x1/4	H10-1005	M42X4.5	4"x1	H10-1048
M2X0.4	13/16x1/4	H10-1006	M48X5	4"x1	H10-1049
M2.5X0.45	13/16x1/4	H10-1007	M2X0.45	13/16x1/4	H10-1050
M3X0.5	13/16x1/4	H10-1008	M2.3X0.45	13/16x1/4	H10-1051
M3.5X0.6	13/16x1/4	H10-1009	M3X0.35	13/16x1/4	H10-1052
M4X0.7	13/16x1/4	H10-1010	M3X0.6	13/16x1/4	H10-1053
M4.5X0.75	13/16x1/4	H10-1011	M4X0.5	13/16x1/4	H10-1054
M5X0.8	13/16x1/4	H10-1012	M4X0.75	13/16x1/4	H10-1055
M6X1	13/16x1/4	H10-1013	M5X0.5	13/16x1/4	H10-1056
M7X1	13/16x1/4	H10-1014	M5X0.9	13/16x1/4	H10-1057
M5X0.8	1"x3/8	H10-1015	M5.5X0.9	13/16x1/4	H10-1058
M6X1	1"x3/8	H10-1016	M6X0.75	13/16x1/4	H10-1059
M7X1	1"x3/8	H10-1017	M8X0.75	1"x3/8	H10-1060
M8X1.25	1"x3/8	H10-1018	M8X1	1"x3/8	H10-1061
M9X1.25	1"x3/8	H10-1019	M9X1	1"x3/8	H10-1062
M10X1.5	1"x3/8	H10-1020	M10X0.75	1"x3/8	H10-1063
M6X1	1-5/16x7/16	H10-1021	M10X1	1"x3/8	H10-1064
M8X1.25	1-5/16x7/16	H10-1022	M10X1.25	1"x3/8	H10-1065
M9X1.25	1-5/16x7/16	H10-1023	M10X1.25	1-5/16x7/16	H10-1066
M10X1.5	1-5/16x7/16	H10-1024	M12X1	1-5/16x7/16	H10-1067
M11X1.5	1-5/16x7/16	H10-1025	M12X1.25	1-5/16x7/16	H10-1068
M12X1.75	1-5/16x7/16	H10-1026	M12X1.5	1-5/16x7/16	H10-1069
M14X2	1-5/16x7/16	H10-1027	M14X1.25	1-5/16x7/16	H10-1070
M10X1.5	1-1/2x1/2	H10-1028	M14X1.5	1-5/16x7/16	H10-1071
M11X1.5	1-1/2x1/2	H10-1029	M16X1	1-1/2x1/2	H10-1072
M12X1.75	1-1/2x1/2	H10-1030	M16X1.5	1-1/2x1/2	H10-1073
M14X2	1-1/2x1/2	H10-1031	M18X1.5	1-1/2x1/2	H10-1074
M16X2	1-1/2x1/2	H10-1032	M20X1	1-1/2x1/2	H10-1075
M18X2.5	1-1/2x1/2	H10-1033	M20X2	1-1/2x1/2	H10-1076
M20X2.5	1-1/2x1/2	H10-1034	M16X1.5	2"x5/8	H10-1077
M10X1.5	2"x5/8	H10-1035	M18X1.5	2"x5/8	H10-1078
M12X1.75	2"x5/8	H10-1036	M20X1.5	2"x5/8	H10-1079
M14X2	2"x5/8	H10-1037	M22X1.5	2"x5/8	H10-1080
M16X2	2"x5/8	H10-1038	M24X1	2"x5/8	H10-1081
M18X2.5	2"x5/8	H10-1039	M24X1.5	2"x5/8	H10-1082
M20X2.5	2"x5/8	H10-1040	M24X2	2"x5/8	H10-1083
M22X2.5	2"x5/8	H10-1041	M25X1.5	2"x5/8	H10-1084
M24X3	2"x5/8	H10-1042	M30X2	3"x7/8	H10-1085
M27X3	3"x7/8	H10-1043	M32X1.5	3"x7/8	H10-1086

MACHINE ROUND THREAD DIES

BS-1127UNC/UNF

High Speed Steel



Size	Outside	Model No.	Size	Outside	Model No.
No.1-64UNC	13/16×1/4	H11-1001	No.4-48UNF	13/16×1/4	H11-1040
No.2-56UNC	13/16×1/4	H11-1002	No.5-44UNF	13/16×1/4	H11-1041
No.3-48UNC	13/16×1/4	H11-1003	No.6-40UNF	13/16×1/4	H11-1042
No.4-40UNC	13/16×1/4	H11-1004	No.8-36UNF	13/16×1/4	H11-1043
No.5-40UNC	13/16×1/4	H11-1005	No.10-32UNF	13/16×1/4	H11-1044
No.6-32UNC	13/16×1/4	H11-1006	No.12-28UNF	13/16×1/4	H11-1045
No.8-32UNC	1"×3/8	H11-1007	1/4-28UNF	13/16×1/4	H11-1046
No.10-24UNC	1"×3/8	H11-1008	No.6-40UNF	1"×3/8	H11-1047
No.12-24UNC	1"×3/8	H11-1009	No.8-36UNF	1"×3/8	H11-1048
1/4-20UNC	1"×3/8	H11-1010	No.10-32UNF	1"×3/8	H11-1049
No.8-32UNC	1-5/16×7/16	H11-1011	No.12-28UNF	1"×3/8	H11-1050
No.10-24UNC	1-5/16×7/16	H11-1012	1/4-28UNF	1"×3/8	H11-1051
No.12-24UNC	1-5/16×7/16	H11-1013	5/16-24UNF	1"×3/8	H11-1052
1/4-20UNC	1-5/16×7/16	H11-1014	3/8-24UNF	1"×3/8	H11-1053
5/16-18UNC	1-5/16×7/16	H11-1015	7/16-20UNF	1"×3/8	H11-1054
3/8-16UNC	1-5/16×7/16	H11-1016	1/4-28UNF	1-5/16×7/16	H11-1055
7/16-14UNC	1-5/16×7/16	H11-1017	5/16-24UNF	1-5/16×7/16	H11-1056
1/4-20UNC	1-1/2×1/2	H11-1018	3/8-24UNF	1-5/16×7/16	H11-1057
5/16-18UNC	1-1/2×1/2	H11-1019	7/16-20UNF	1-5/16×7/16	H11-1058
3/8-16UNC	1-1/2×1/2	H11-1020	1/2-20UNF	1-5/16×7/16	H11-1059
7/16-14UNC	1-1/2×1/2	H11-1021	9/16-18UNF	1-5/16×7/16	H11-1060
1/2-13UNC	1-1/2×1/2	H11-1022	1/4-28UNF	1-1/2×1/2	H11-1061
9/16-12UNC	1-1/2×1/2	H11-1023	5/16-24UNF	1-1/2×1/2	H11-1062
5/8-11UNC	1-1/2×1/2	H11-1024	3/8-24UNF	1-1/2×1/2	H11-1063
3/4-10UNC	1-1/2×1/2	H11-1025	7/16-20UNF	1-1/2×1/2	H11-1064
1/2-13UNC	2"×5/8	H11-1026	1/2-20UNF	1-1/2×1/2	H11-1065
9/16-12UNC	2"×5/8	H11-1027	9/16-18UNF	1-1/2×1/2	H11-1066
5/8-11UNC	2"×5/8	H11-1028	5/8-18UNF	1-1/2×1/2	H11-1067
3/4-10UNC	2"×5/8	H11-1029	3/4-16UNF	1-1/2×1/2	H11-1068
7/8-9UNC	2"×5/8	H11-1030	1/2-20UNF	2"×5/8	H11-1069
1-8UNC	2"×5/8	H11-1031	9/16-18UNF	2"×5/8	H11-1070
1-1/8-7UNC	3"×7/8	H11-1032	5/8-18UNF	2"×5/8	H11-1071
1-1/4-7UNC	3"×7/8	H11-1033	3/4-16UNF	2"×5/8	H11-1072
1-3/8-6UNC	3"×7/8	H11-1034	7/8-14UNF	2"×5/8	H11-1073
1-1/2-6UNC	3"×7/8	H11-1035	1-12UNF	2"×5/8	H11-1074
No.0-80UNF	13/16×1/4	H11-1036	1-1/8-12UNF	3"×7/8	H11-1075
No.1-72UNF	13/16×1/4	H11-1037	1-1/4-12UNF	3"×7/8	H11-1076
No.2-64UNF	13/16×1/4	H11-1038	1-3/8-12UNF	3"×7/8	H11-1077
No.3-56UNF	13/16×1/4	H11-1039	1-1/2-12UNF	3"×7/8	H11-1078

MACHINE ROUND THREAD DIES

BS-1127BSW/BSF

High Speed Steel



Size	Outside	Model No.	Size	Outside	Model No.
1/16-60BSW	13/16×1/4	H12-1001	1-8BSW	3"×7/8	H12-1030
3/32-48BSW	13/16×1/4	H12-1002	1-1/8-7BSW	3"×7/8	H12-1031
1/8-40BSW	13/16×1/4	H12-1003	1-1/4-7BSW	3"×7/8	H12-1032
5/32-32BSW	13/16×1/4	H12-1004	1-3/8-6BSW	3"×7/8	H12-1033
3/16-24BSW	13/16×1/4	H12-1005	1-1/2-6BSW	3"×7/8	H12-1034
7/32-24BSW	13/16×1/4	H12-1006	3/16-32BSF	13/16×1/4	H12-1035
1/4-20BSW	13/16×1/4	H12-1007	7/32-28BSF	13/16×1/4	H12-1036
1/4-20BSW	1"×3/8	H12-1008	1/4-26BSF	13/16×1/4	H12-1037
5/16-18BSW	1"×3/8	H12-1009	1/4-26BSF	1"×3/8	H12-1038
3/8-16BSW	1"×3/8	H12-1010	5/16-22BSF	1"×3/8	H12-1039
1/4-20BSW	1-5/16×7/16	H12-1011	3/8-20BSF	1"×3/8	H12-1040
5/16-18BSW	1-5/16×7/16	H12-1012	1/4-26BSF	1-5/16×7/16	H12-1041
3/8-16BSW	1-5/16×7/16	H12-1013	5/16-22BSF	1-5/16×7/16	H12-1042
7/16-14BSW	1-5/16×7/16	H12-1014	3/8-20BSF	1-5/16×7/16	H12-1043
1/2-12BSW	1-5/16×7/16	H12-1015	7/16-18BSF	1-5/16×7/16	H12-1044
9/16-12BSW	1-5/16×7/16	H12-1016	1/2-16BSF	1-5/16×7/16	H12-1045
3/8-16BSW	1-1/2×1/2	H12-1017	9/16-16BSF	1-5/16×7/16	H12-1046
7/16-14BSW	1-1/2×1/2	H12-1018	7/16-18BSF	1-1/2×1/2	H12-1047
1/2-12BSW	1-1/2×1/2	H12-1019	1/2-16BSF	1-1/2×1/2	H12-1048
9/16-12BSW	1-1/2×1/2	H12-1020	9/16-16BSF	1-1/2×1/2	H12-1049
5/8-11BSW	1-1/2×1/2	H12-1021	5/8-14BSF	1-1/2×1/2	H12-1050
3/4-10BSW	1-1/2×1/2	H12-1022	1/2-16BSF	2"×5/8	H12-1051
1/2-12BSW	2"×5/8	H12-1023	5/8-14BSF	2"×5/8	H12-1052
9/16-12BSW	2"×5/8	H12-1024	3/4-12BSF	2"×5/8	H12-1053
5/8-11BSW	2"×5/8	H12-1025	7/8-11BSF	2"×5/8	H12-1054
3/4-10BSW	2"×5/8	H12-1026	1-10BSF	2"×5/8	H12-1055
13/16-10BSW	2"×5/8	H12-1027	1-1/4-9BSF	3"×7/8	H12-1056
7/8-9BSW	2"×5/8	H12-1028	1-3/8-8BSF	3"×7/8	H12-1057
1-8BSW	2"×5/8	H12-1029	1-1/2-8BSF	3"×7/8	H12-1058

GB standard TAP

DIN standard TAP

BS1127 standard

NFE-74001 standard

MACHINE ROUND THREAD DIES

BS-1127BA

High Speed Steel



Size	Outside	Model No.	Size	Outside	Model No.
BA0	13/16×1/4	H13-1001	BA6	13/16×1/4	H13-1007
BA1	13/16×1/4	H13-1002	BA7	13/16×1/4	H13-1008
BA2	13/16×1/4	H13-1003	BA8	13/16×1/4	H13-1009
BA3	13/16×1/4	H13-1004	BA0	1"×3/8	H13-1010
BA4	13/16×1/4	H13-1005	BA1	1"×3/8	H13-1011
BA5	13/16×1/4	H13-1006	BA2	1"×3/8	H13-1012

BS-1127BSB

High Speed Steel



Size	Outside	Model No.	Size	Outside	Model No.
1/4-26BSB	13/16×1/4	H14-1001	1/2-26BSB	1-5/16×7/16	H14-1005
5/16-26BSB	1"×3/8	H14-1002	5/8-26BSB	1-1/2×1/2	H14-1006
3/8-26BSB	1"×3/8	H14-1003	3/4-26BSB	1-1/2×1/2	H14-1007
7/16-26BSB	1-5/16×7/16	H14-1004			

BS-1127BSPF

High Speed Steel



Size	Outside	Model No.	Size	Outside	Model No.
BSPF1/8-28	1"×3/8	H15-1001	BSPF3/8-19	2"×5/8	H15-1009
BSPF1/8-28	1-5/16×7/16	H15-1002	BSPF1/2-14	2"×5/8	H15-1010
BSPF1/4-19	1-5/16×7/16	H15-1003	BSPF5/8-14	2"×5/8	H15-1011
BSPF1/8-28	1-1/2×1/2	H15-1004	BSPF3/4-14	2"×5/8	H15-1012
BSPF1/4-19	1-1/2×1/2	H15-1005	BSPF3/4-14	3"×7/8	H15-1013
BSPF3/8-19	1-1/2×1/2	H15-1006	BSPF7/8-14	3"×7/8	H15-1014
BSPF1/2-14	1-1/2×1/2	H15-1007	BSPF1-11	3"×7/8	H15-1015
BSPF1/4-19	2"×5/8	H15-1008	BSPF1-1/4-11	3"×7/8	H15-1016

MACHINE ROUND THREAD DIES

BS-1127BSPT

High Speed Steel



Size	Outside	Model No.	Size	Outside	Model No.
BSPT1/8-28	1"×3/8	H16-1001	BSPT3/8-19	2"×5/8	H16-1008
BSPT1/8-28	1-5/16×7/16	H16-1002	BSPT1/2-14	2"×5/8	H16-1009
BSPT1/4-19	1-5/16×7/16	H16-1003	BSPF3/4-14	2"×5/8	H16-1010
BSPT1/8-28	1-1/2×1/2	H16-1004	BSPT3/4-14	3"×7/8	H16-1011
BSPT1/4-19	1-1/2×1/2	H16-1005	BSPT1-11	3"×7/8	H16-1012
BSPT3/8-19	1-1/2×1/2	H16-1006	BSPT1-1/4-11	3"×7/8	H16-1013
BSPT1/4-19	2"×5/8	H16-1007			

BS-1127NPT

High Speed Steel

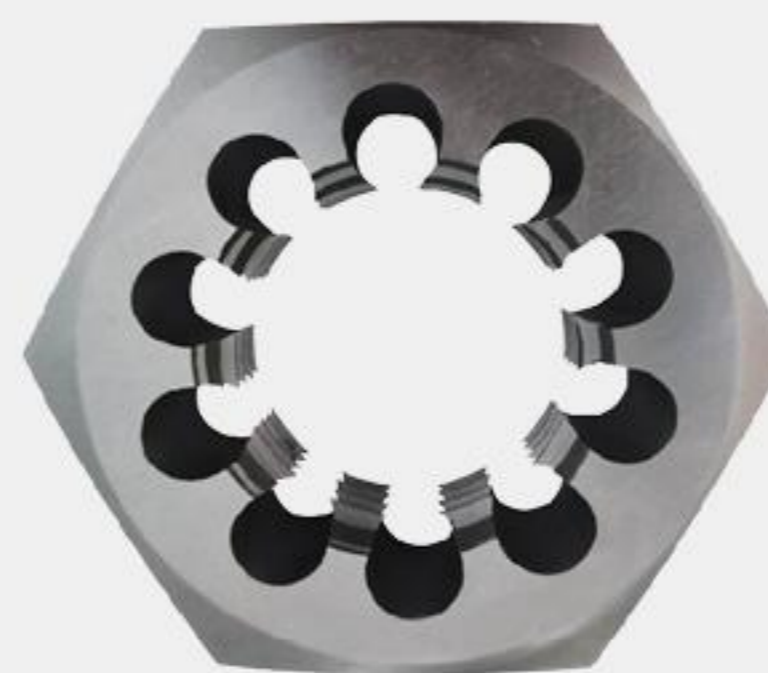


Size	Outside	Model No.	Size	Outside	Model No.
1/8-27NPT	1"×3/8	H17-1001	1/4-18NPT	2"×5/8	H17-1007
1/8-27NPT	1-5/16×7/16	H17-1002	3/8-18NPT	2"×5/8	H17-1008
1/4-18NPT	1-5/16×7/16	H17-1003	1/2-14NPT	2"×5/8	H17-1009
1/8-27NPT	1-1/2×1/2	H17-1004	3/4-14NPT	2"×5/8	H17-1010
1/4-18NPT	1-1/2×1/2	H17-1005	1-11-1/2NPT	3"×7/8	H17-1011
3/8-18NPT	1-1/2×1/2	H17-1006	1-1/4-11-1/2NPT	3"×7/8	H17-1012

HEXAGON DIES NUTS

BS-1127MS/MF

High Speed Steel



Size	Outside	Model No.	Size	Outside	Model No.
M3X0.5	0.71"x1/4"	H18-1001	M5X0.5	0.71"x1/4"	H18-1020
M4X0.7	0.71"x1/4"	H18-1002	M6X0.75	0.71"x1/4"	H18-1021
M5X0.8	0.71"x1/4"	H18-1003	M7X0.75	0.82"x5/16"	H18-1022
M6X1.0	0.71"x1/4"	H18-1004	M8X1.0	0.82"x5/16"	H18-1023
M7X1.0	0.82"x5/16"	H18-1005	M10X1.0	0.92"x3/8"	H18-1024
M8X1.25	0.82"x5/16"	H18-1006	M10X1.25	0.92"x3/8"	H18-1025
M9X1.25	0.92"x3/8"	H18-1007	M12X1.25	1.1"x1/2"	H18-1026
M10X1.5	0.92"x3/8"	H18-1008	M12X1.5	1.1"x1/2"	H18-1027
M11X1.5	1.01"x7/16"	H18-1009	M14X1.25	1.3"x5/8"	H18-1028
M12X1.75	1.1"x1/2"	H18-1010	M14X1.5	1.3"x5/8"	H18-1029
M14X2.0	1.3"x5/8"	H18-1011	M16X1.5	1.3"x5/8"	H18-1030
M16X2.0	1.3"x5/8"	H18-1012	M18X1.5	1.48"x11/16"	H18-1031
M18X2.5	1.48"x11/16"	H18-1013	M20X1.5	1.48"x11/16"	H18-1032
M20X2.5	1.48"x11/16"	H18-1014	M22X1.5	1.67"x13/16"	H18-1033
M22X2.5	1.67"x13/16"	H18-1015	M24X1.5	2.05"x15/16"	H18-1034
M24X3.0	2.05"x15/16"	H18-1016	M24X2.0	2.05"x15/16"	H18-1035
M3X0.35	0.71"x1/4"	H18-1017	M25X1.5	2.05"x15/16"	H18-1036
M4X0.5	0.71"x1/4"	H18-1018	M30X2.0	2.22"x1-1/16"	H18-1037
M4.5X0.5	0.71"x1/4"	H18-1019	M32X1.5	2.58"x1-1/8"	H18-1038

BS-1127UNC/UNF

High Speed Steel

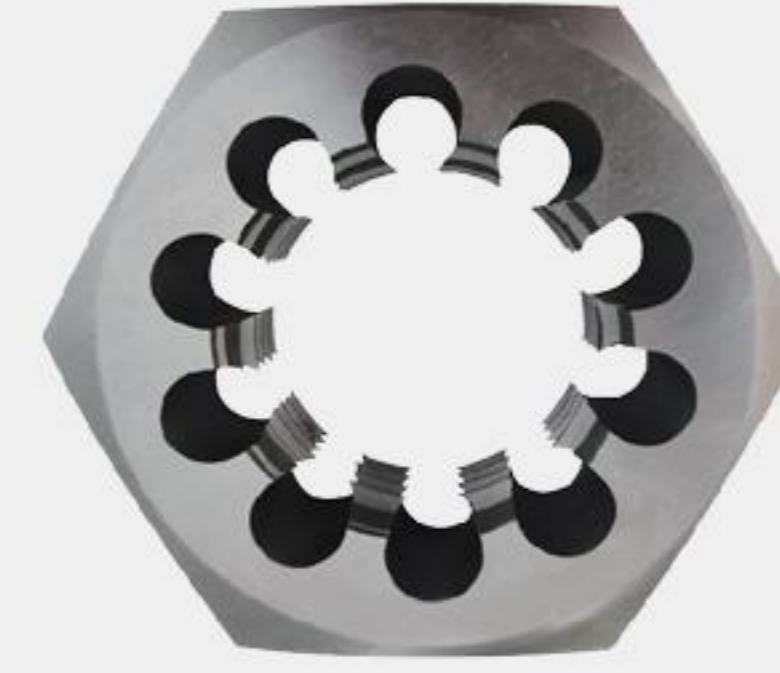


Size	Outside	Model No.	Size	Outside	Model No.
No.8-32UNC	0.71"x1/4"	H19-1001	2-4-1/2UNC	3.55"x1-3/4"	H19-1017
No.10-24UNC	0.71"x1/4"	H19-1002	No.10-32UNF	0.71"x1/4"	H19-1018
No.12-24UNC	0.71"x1/4"	H19-1003	1/4-28UNF	0.71"x1/4"	H19-1019
1/4-20UNC	0.71"x1/4"	H19-1004	5/16-24UNF	0.82"x5/16"	H19-1020
5/16-18UNC	0.82"x5/16"	H19-1005	3/8-24UNF	0.92"x3/8"	H19-1021
3/8-16UNC	0.92"x3/8"	H19-1006	7/16-20UNF	1.01"x7/16"	H19-1022
7/16-14UNC	1.01"x7/16"	H19-1007	1/2-20UNF	1.1"x1/2"	H19-1023
1/2-13UNC	1.1"x1/2"	H19-1008	9/16-18UNF	1.3"x5/8"	H19-1024
9/16-12UNC	1.3"x5/8"	H19-1009	5/8-18UNF	1.3"x5/8"	H19-1025
5/8-11UNC	1.3"x5/8"	H19-1010	3/4-16UNF	1.48"x11/16"	H19-1026
3/4-10UNC	1.48"x11/16"	H19-1011	7/8-14UNF	1.67"x13/16"	H19-1027
7/8-9UNC	1.67"x13/16"	H19-1012	1-12UNF	2.05"x15/16"	H19-1028
1-8UNC	2.05"x15/16"	H19-1013	1-1/8-12UNF	2.22"x1-1/16"	H19-1029
1-1/8-7UNC	2.22"x1-1/16"	H19-1014	1-1/4-12UNF	2.22"x1-1/16"	H19-1030
1-1/4-7UNC	2.22"x1-1/16"	H19-1015	1-1/2-12UNF	2.76"x1-1/4"	H19-1031
1-1/2-6UNC	2.76"x1-1/4"	H19-1016			

HEXAGON DIES NUTS

BS-1127BSW/BSF

High Speed Steel



Size	Outside	Model No.	Size	Outside	Model No.
1/8-40BSW	0.71"x1/4"	H20-1001	2-4-1/2BSW	3.55"x1-3/4"	H20-1016
3/16-24BSW	0.71"x1/4"	H20-1002	3/16-32BSF	0.71"x1/4"	H20-1017
1/4-20BSW	0.71"x1/4"	H20-1003	1/4-26BSF	0.71"x1/4"	H20-1018
5/16-18BSW	0.82"x5/16"	H20-1004	5/16-22BSF	0.82"x5/16"	H20-1019
3/8-16BSW	0.92"x3/8"	H20-1005	3/8-20BSF	0.92"x3/8"	H20-1020
7/16-14BSW	1.01"x7/16"	H20-1006	7/16-18BSF	1.01"x7/16"	H20-1021
1/2-12BSW	1.1"x1/2"	H20-1007	1/2-16BSF	1.1"x1/2"	H20-1022
9/16-12BSW	1.3"x5/8"	H20-1008	9/16-16BSF	1.3"x5/8"	H20-1023
5/8-11BSW	1.3"x5/8"	H20-1009	5/8-14BSF	1.3"x5/8"	H20-1024
3/4-10BSW	1.48"x11/16"	H20-1010	3/4-12BSF	1.48"x11/16"	H20-1025
7/8-9BSW	1.67"x13/16"	H20-1011	7/8-11BSF	1.67"x13/16"	H20-1026
1-8BSW	2.05"x15/16"	H20-1012	1-10BSF	2.05"x15/16"	H20-1027
1-1/8-7BSW	2.22"x1-1/16"	H20-1013	1-1/8-9BSF	2.22"x1-1/16"	H20-1028
1-1/4-7BSW	2.22"x1-1/16"	H20-1014	1-1/4-9BSF	2.22"x1-1/16"	H20-1029
1-1/2-6BSW	2.76"x1-1/4"	H20-1015	1-1/2-8BSF	2.76"x1-1/4"	H20-1030

BS-1127BSPF

High Speed Steel



Size	Outside	Model No.	Size	Outside	Model No.
BSPF1/8-28	0.92"x3/8"	H21-1001	BSPF5/8-14	1.67"x13/16"	H21-1005
BSPF1/4-19	1.1"x1/2"	H21-1002	BSPF3/4-14	2.05"x15/16"	H21-1006
BSPF3/8-19	1.3"x5/8"	H21-1003	BSPF1-11	2.58"x1-1/8"	H21-1007
BSPF1/2-14	1.67"x13/16"	H21-1004			

BS-1127BA

High Speed Steel



Size	Outside	Model No.	Size	Outside	Model No.
OBA	0.71"x1/4"	H22-1001	4BA	0.71"x1/4"	H22-1003
2BA	0.71"x1/4"	H22-1002	6BA	0.71"x1/4"	H22-1004

ADJUSTABLE ROUND DIES

NFE-74001M

High Speed Steel or Alloy Tool Steel



Size	Outside	HSS Model No.	9CrSi Model No.	Size	Outside	HSS Model No.	9CrSi Model No.
M1.6X0.35	13/16"	K12-1001	K13-1001	M10X1.5	1-1/2"	K12-1060	K13-1060
M1.6X0.35	1"	K12-1002	K13-1002	M11X1	1"	K12-1061	K13-1061
M1.8X0.35	13/16"	K12-1003	K13-1003	M11X1	1-1/2"	K12-1062	K13-1062
M1.8X0.35	1"	K12-1004	K13-1004	M11X1.5	1"	K12-1063	K13-1063
M2X0.4	13/16"	K12-1005	K13-1005	M11X1.5	1-1/2"	K12-1064	K13-1064
M2X0.4	1"	K12-1006	K13-1006	M12X1	1"	K12-1065	K13-1065
M2.2X0.45	13/16"	K12-1007	K13-1007	M12X1	1-1/2"	K12-1066	K13-1066
M2.2X0.45	1"	K12-1008	K13-1008	M12X1.25	1"	K12-1067	K13-1067
M2.3X0.4	13/16"	K12-1009	K13-1009	M12X1.25	1-1/2"	K12-1068	K13-1068
M2.3X0.4	1"	K12-1010	K13-1010	M12X1.5	1-1/2"	K12-1069	K13-1069
M2.5X0.45	13/16"	K12-1011	K13-1011	M12X1.75	1-1/2"	K12-1070	K13-1070
M2.5X0.45	1"	K12-1012	K13-1012	M14X1	1-1/2"	K12-1071	K13-1071
M2.6X0.45	13/16"	K12-1013	K13-1013	M14X1.25	1-1/2"	K12-1072	K13-1072
M2.6X0.45	1"	K12-1014	K13-1014	M14X1.5	1-1/2"	K12-1073	K13-1073
M3X0.5	13/16"	K12-1015	K13-1015	M14X2	1-1/2"	K12-1074	K13-1074
M3X0.5	1"	K12-1016	K13-1016	M15X1.5	1-1/2"	K12-1075	K13-1075
M3X0.6	13/16"	K12-1017	K13-1017	M15X1.5	2"	K12-1076	K13-1076
M3X0.6	1"	K12-1018	K13-1018	M16X1	1-1/2"	K12-1077	K13-1077
M3.5X0.6	13/16"	K12-1019	K13-1019	M16X1	2"	K12-1078	K13-1078
M3.5X0.6	1"	K12-1020	K13-1020	M16X1.5	1-1/2"	K12-1079	K13-1079
M4X0.5	13/16"	K12-1021	K13-1021	M16X1.5	2"	K12-1080	K13-1080
M4X0.5	1"	K12-1022	K13-1022	M16X2	1-1/2"	K12-1081	K13-1081
M4X0.7	13/16"	K12-1023	K13-1023	M16X2	2"	K12-1082	K13-1082
M4X0.7	1"	K12-1024	K13-1024	M17X1.5	1-1/2"	K12-1083	K13-1083
M4X0.75	13/16"	K12-1025	K13-1025	M17X1.5	2"	K12-1084	K13-1084
M4X0.75	1"	K12-1026	K13-1026	M18X1.5	1-1/2"	K12-1085	K13-1085
M4.5X0.5	13/16"	K12-1027	K13-1027	M18X1.5	2"	K12-1086	K13-1086
M4.5X0.5	1"	K12-1028	K13-1028	M18X2	1-1/2"	K12-1087	K13-1087
M4.5X0.75	13/16"	K12-1029	K13-1029	M18X2	2"	K12-1088	K13-1088
M4.5X0.75	1"	K12-1030	K13-1030	M18X2.5	1-1/2"	K12-1089	K13-1089
M5X0.5	13/16"	K12-1031	K13-1031	M18X2.5	2"	K12-1090	K13-1090
M5X0.5	1"	K12-1032	K13-1032	M20X1.5	1-1/2"	K12-1091	K13-1091
M5X0.8	13/16"	K12-1033	K13-1033	M20X1.5	2"	K12-1092	K13-1092
M5X0.8	1"	K12-1034	K13-1034	M20X2	1-1/2"	K12-1093	K13-1093
M5X0.9	13/16"	K12-1035	K13-1035	M20X2	2"	K12-1094	K13-1094
M5X0.9	1"	K12-1036	K13-1036	M20X2.5	1-1/2"	K12-1095	K13-1095
M6X0.5	13/16"	K12-1037	K13-1037	M20X2.5	2"	K12-1096	K13-1096
M6X0.5	1"	K12-1038	K13-1038	M22X1	2"	K12-1097	K13-1097
M6X0.75	13/16"	K12-1039	K13-1039	M22X1.5	2"	K12-1098	K13-1098
M6X0.75	1"	K12-1040	K13-1040	M22X2	2"	K12-1099	K13-1099
M6X1	13/16"	K12-1041	K13-1041	M22X2.5	2"	K12-1100	K13-1100
M6X1	1"	K12-1042	K13-1042	M24X1.5	2"	K12-1101	K13-1101
M6.3X1	1"	K12-1043	K13-1043	M24X1.5	2-1/2"	K12-1102	K13-1102
M7X0.75	1"	K12-1044	K13-1044	M24X2	2"	K12-1103	K13-1103
M7X1	1"	K12-1045	K13-1045	M24X2	2-1/2"	K12-1104	K13-1104
M8X0.75	1"	K12-1046	K13-1046	M24X3	2-1/2"	K12-1105	K13-1105
M8X	1"	K12-1047	K13-1047	M27X2	2-1/2"	K12-1106	K13-1106
M8X1.25	1"	K12-1048	K13-1048	M27X3	2-1/2"	K12-1107	K13-1107
M9X	1"	K12-1049	K13-1049	M28X2	2-1/2"	K12-1108	K13-1108
M9X	1-1/2"	K12-1050	K13-1050	M30X1.5	2-1/2"	K12-1109	K13-1109
M9X1.25	1"	K12-1051	K13-1051	M30X2	2-1/2"	K12-1110	K13-1110
M9X1.25	1-1/2"	K12-1052	K13-1052	M30X3	2-1/2"	K12-1111	K13-1111
M10X0.75	1"	K12-1053	K13-1053	M30X3.5	2-1/2"	K12-1112	K13-1112
M10X0.75	1-1/2"	K12-1054	K13-1054	M33X3	2-1/2"	K12-1113	K13-1113
M10X1	1"	K12-1055	K13-1055	M33X3.5	2-1/2"	K12-1114	K13-1114
M10X1	1-1/2"	K12-1056	K13-1056	M36X3	2-1/2"	K12-1115	K13-1115
M10X1.25	1"	K12-1057	K13-1057	M36X4	3"	K12-1116	K13-1116
M10X1.25	1-1/2"	K12-1058	K13-1058	M39X3	3"	K12-1117	K13-1117
M10X1.5	1"	K12-1059	K13-1059	M39X4	3"	K12-1118	K13-1118

ADJUSTABLE ROUND DIES

NFE-74001UNC/UNF



High Speed Steel or Alloy Tool Steel

Size	Outside	HSS Model No.	9CrSi Model No.	Size	Outside	HSS Model No.	9CrSi Model No.
0-80UNF	13/16"	K10-1001	K11-1001	7/16-14UNC	1"	K10-1061	K11-1061
0-80UNF	1"	K10-1002	K11-1002	7/16-14UNC	1-1/2"	K10-1062	K11-1062
1-64UNC	13/16"	K10-1003	K11-1003	7/16-14UNC	2"	K10-1063	K11-1063
1-64UNC	1"	K10-1004	K11-1004	7/16-20UNF	1"	K10-1064	K11-1064
1-72UNF	13/16"	K10-1005	K11-1005	7/16-20UNF	1-1/2"	K10-1065	K11-1065
1-72UNF	1"	K10-1006	K11-1006	7/16-20UNF	2"	K10-1066	K11-1066
2-56UNC	13/16"	K10-1007	K11-1007	1/2-13UNC	1"	K10-1067	K11-1067
2-56UNC	1"	K10-1008	K11-1008	1/2-13UNC	1-1/2"	K10-1068	K11-1068
2-64UNF	13/16"	K10-1009	K11-1009	1/2-13UNC	2"	K10-1069	K11-1069
2-64UNF	1"	K10-1010	K11-1010	1/2-20UNF	1"	K10-1070	K11-1070
3-48UNC	13/16"	K10-1011	K11-1011	1/2-20UNF	1-1/2"	K10-1071	K11-1071
3-48UNC	1"	K10-1012	K11-1012	1/2-20UNF	2"	K10-1072	K11-1072
3-56UNF	13/16"	K10-1013	K11-1013	9/16-12UNC	1-1/2"	K10-1073	K11-1073
3-56UNF	1"	K10-1014	K11-1014	9/16-12UNC	2"	K10-1074	K11-1074
4-40UNC	13/16"	K10-1015	K11-1015	9/16-18UNF	1-1/2"	K10-1075	K11-1075
4-40UNC	1"	K10-1016	K11-1016	9/16-18UNF	2"	K10-1076	K11-1076
4-48UNF	13/16"	K10-1017	K11-1017	5/8-11UNC	1-1/2"	K10-1077	K11-1077
4-48UNF	1"	K10-1018	K11-1018	5/8-11UNC	2"	K10-1078	K11-1078
5-40UNC	13/16"	K10-1019	K11-1019	5/8-18UNF	1-1/2"	K10-1079	K11-1079
5-40UNC	1"	K10-1020	K11-1020	5/8-18UNF	2"	K10-1080	K11-1080
5-44UNF	13/16"	K10-1021	K11-1021	11/16-11UNC	1-1/2"	K10-1081	K11-1081
5-44UNF	1"	K10-1022	K11-1022	11/16-11UNC	2"	K10-1082	K11-1082
6-32UNC	13/16"	K10-1023	K11-1023	11/16-16UNF	1-1/2"	K10-1083	K11-1083
6-32UNC	1"	K10-1024	K11-1024	11/16-16UNF	2"	K10-1084	K11-1084
6-40UNF	13/16"	K10-1025	K11-1025	3/4-10UNC	1-1/2"	K10-1085	K11-1085
6-40UNF	1"	K10-1026	K11-1026	3/4-10UNC	2"	K10-1086	K11-1086
8-32UNC	13/16"	K10-1027	K11-1027	3/4-16UNF	1-1/2"	K10-1087	K11-1087
8-32UNC	1"	K10-1028	K11-1028	3/4-16UNF	2"	K10-1088	K11-1088
8-36UNF	13/16"	K10-1029	K11-1029	7/8-9UNC	2"	K10-1089	K11-1089
8-36UNF	1"	K10-1030	K11-1030	7/8-14UNF	2"	K10-1090	K11-1090
10-24UNC	13/16"	K10-1031	K11-1031	1-8UNC	2"	K10-1091	K11-1091
10-24UNC	1"	K10-1032	K11-1032	1-8UNC	2-1/2"	K10-1092	K11-1092
10-32UNF	13/16"	K10-1033	K11-1033	1-8UNC	3"	K10-1093	K11-1093
10-32UNF	1"	K10-1034	K11-1034	1-12UNF	2"	K10-1094	K11-1094
12-24UNC	13/16"	K10-1035	K11-1035	1-12UNF	2-1/2"	K10-1095	K11-1095
12-24UNC	1"	K10-1036	K11-1036	1-12UNF	3"	K10-1096	K11-1096
12-28UNF	13/16"	K10-1037	K11-1037	1-14UNS	2"	K10-1097	K11-1097
12-28UNF	1"	K10-1038	K11-1038	1-14UNS	2-1/2"	K10-1098	K11-1098
1/4-20UNC	13/16"	K10-1039	K11-1039	1-14UNS	3"	K10-1099	K11-1099
1/4-20UNC	1"	K10-1040	K11-1040	1-1/8-7UNC	2-1/2"	K10-1100	K11-1100
1/4-20UNC	1-1/2"	K10-1041	K11-1041	1-1/8-7UNC	3"	K10-1101	K11-1101
1/4-20UNC	2"	K10-1042	K11-1042	1-1/8-12UNF	2-1/2"	K10-1102	K11-1102
1/4-28UNF	13/16"	K10-1043	K11-1043	1-1/8-12UNF	3"	K10-1103	K11-1103
1/4-28UNF	1"	K10-1044	K11-1044	1-1/4-7UNC	2-1/2"	K10-1104	K11-1104
1/4-28UNF	1-1/2"	K10-1045	K11-1045	1-1/4-7UNC	3"	K10-1105	K11-1105
1/4-28UNF	2"	K10-1046	K11-1046	1-1/4-12UNF	2-1/2"	K10-1106	K11-1106
5/16-18UNC	13/16"	K10-1047	K11-1047	1-1/4-12UNF	3"	K10-1107	K11-1107
5/16-18UNC	1"	K10-1048	K11-1048	1-3/8-6UNC	2-1/2"	K10-1108	K11-1108
5/16-18UNC	1-1/2"	K10-1049	K11-1049	1-3/8-6UNC	3"	K10-1109	K11-1109
5/16-18UNC	2"	K10-1050	K11-1050	1-3/8-12UNF	2-1/2"	K10-1110	K11-1110
5/16-24UNF	13/16"	K10-1051	K11-1051	1-3/8-12UNF	3"	K10-1111	K11-1111
5/16-24UNF	1"	K10-1052	K11-1052	1-1/2-6UNC	2-1/2"	K10-1112	K11-1112
5/16-24UNF	1-1/2"	K10-1053	K11-1053	1-1/2-6UNC	3"	K10-1113	K11-1113
5/16-24UNF	2"	K10-1054	K11-1054	1-1/2-12UNF	2-1/2"	K10-1114	K11-1114
3/8-16UNC	1"	K10-1055	K11-1055	1-1/2-12UNF	3"	K10-1115	K11-1115
3/8-16UNC	1-1/2"	K10-1056	K11-1056	1-3/4-5UNC	3"	K10-1116	K11-1116
3/8-16UNC	2"	K10-1057	K11-1057	1-3/4-12UNF	3"	K10-1117	K11-1117
3/8-24UNF	1"	K10-1058	K11-1058	2-4-1/2UNC	3"	K10-1118	K11-1118
3/8-24UNF	1-1/2"	K10-1059	K11-1059	2-12UNF	3"	K10-1119	K11-1119
3/8-24UNF	2"	K10-1060	K11-1060				

WRENCH

DIN-225

DIE HANDLE



Size	For Dies			Length	Model No.	Size	For Dies			Length	Model No.
	Metric	UNC/UNF	Pipe				Metric	UNC/UNF	Pipe		
16x5	M1-M2.6	1/16-3/32		160	J10-1001	55x22	M22-M24	7/8-1"		560	J10-1010
20x5	M3-M4	1/8-5/32		200	J10-1002	55x16	MF21-MF26		G5/8-G3/4	560	J10-1011
20x7	M4.5-M6	3/16-1/4		200	J10-1003	65x25	M27-M36	1-1/8-1-3/8		630	J10-1012
25x9	M7-M9	5/16	G1/16	224	J10-1004	65x18	MF27-MF36		G7/8-G1-11	630	J10-1013
30x11	M10-M11	3/8-7/16	G1/8	280	J10-1005	75x20	MM39-M42	1-1/2-1-5/8		800	J10-1014
38x14	M12-M14	1/2-9/16		315	J10-1006	75x30	MF38-MF42		G1-1/8-G11/4	800	J10-1015
38x10	MF 12-MF14		G1/4	315	J10-1007	90X36	M45-M52	1-3/4-2"		900	J10-1016
45x18	M16-M20	5/8-3/4		450	J10-1008	90X22	MF45-MF52		G1-1/2	900	J10-1017
45x14	MF 16-MF20		G3/8-G1/2	450	J10-1009	105X22	M55-M62		G1-3/4-G2-11	1000	J10-1018

DIN-2568

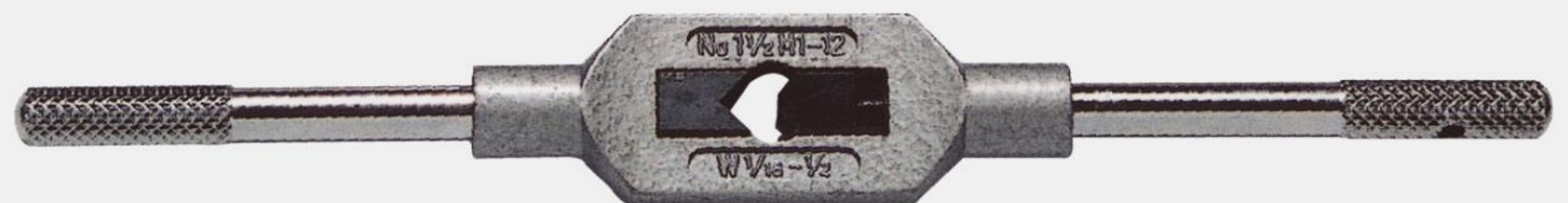
DIE HANDLE



Size	Model No	Size	Model No
D16	J11-1001	D55	J11-1007
D20	J11-1002	D65	J11-1008
D25	J11-1003	D75	J11-1009
D30	J11-1004	D90	J11-1010
D38	J11-1005	D105	J11-1011
D45	J11-1006	D120	J11-1012

DIN-1814

TAP WRENCH



Size	For Taps			Length	Model No.
	Metric	UNC/UNF	Pipe		
0#	M1-M8	1/16-5/16		125	J13-1001
1#	M3-M8	1/8-3/8		180	J13-1002
1-1/2#	M1-M12	1/8-1/2	G1/8	200	J13-1003
2#	M4-M12	3/16-5/8	G1/8-G3/8	280	J13-1004
3#	M5-M20	1/4-3/4	G1/8-G1/2	375	J13-1005
4#	M10-M27	3/8-1"	G1/8-G3/4	500	J13-1006
5#	M14-M33	5/8-1-1/4	G1/4-G1-11	750	J13-1007
6#	M18-M42	3/4-1-1/2	G1/4-G1-1/4	1000	J13-1008
7#	M25-M52	7/8-2"	G5/8-G2-1/4	1250	J13-1009

WRENCH

ISO

ITAP WRENCH



Size	For Taps		Length	Model No.
	Metric	UNC/UNF		
0#	M1-M4	1/16-5/32	200	J14-1001
1#	M3.5-M8	5/32-1/16	200	J14-1002
2#	M4-M10	5/32-3/8	240	J14-1003
3#	M5-M12	7/32-1/2	300	J14-1004
4#	M9-M16	3/8-5/8	340	J14-1005
5#	M12-M20	1/2-13/16	450	J14-1006
6#	M18-M27	11/16-1"	650	J14-1007

T-handle Tap Wrenches



Size	For Taps		Length	Model No.
	Metric	UNC/UNF		
1#	M3-M8	1/8-5/16	70	J16-1001
2#	M5-M10	7/32-3/8	80	J16-1002
3#	M6-M12	1/4-1/2	90	J16-1003

BALL WRENCH



Size	For Taps		Length	Model No.
	Metric	UNC/UNF		
1#	M3-M8	1/8-5/16	70	J16-1001
2#	M5-M10	7/32-3/8	80	J16-1002
3#	M6-M12	1/4-1/2	90	J16-1003

Tap Wrenches With Ratchet



Size	For Taps			Length	Model No.
	Metric	Inch	Pipe		
1#	M3-M10	1/8-3/8		85	J17-1001
2#	M5-M12	7/32-1/2	G1/8	100	J17-1002
10#	M3-M10	1/8-3/8		250	J17-1003
20#	M5-M12	7/32-1/2	G1/8	300	J17-1004

TAPS AND DIES SET

12 PCS TAP&DIE SET

Mateiral	HSS
Packing	Plastic box

Metric size set including:

5TAPS:M6X1.0,M7X1.0,M8X1.25,M10X1.5,M12X1.75
 5DIES:SIZE AS TAPS
 1TAP WRENCH M3-M12
 1DIE WRENCH O/D25mm

Inch size set including:

5TAPS:1/4-20,5/16-18,3/8-16,7/16-14,1/2-13
 5DIES:SIZE AS TAPS
 1TAP WRENCH 1/16-1/2
 1DIE WRENCH O/D 1"



16 PCS TAP&DIE SET

Mateiral	HSS
Packing	Plastic box

The set including:

7TAPS:M3X0.5,M4X0.7,M5X0.8,M6X1.0,M8X1.25M10X1.5,M12X1.75
 7DIES:SIZE AS TAPS
 1 DIE WRENCH O/D25MM
 1 TAP WRENCH M3-12



20 PCS TAP&DIE SET

Mateiral	HSS
Packing	Plastic box

The set including:

9TAPS:M3X0.5,M4X0.7,M5X0.8,M6X1.0,M7X1.0M8X1.25,M9X1.25,M10X1.25,M12X1.75
 9 DIES: SIZE AS TAPS
 1 DIE WRENCH O/D 25MM
 1 TAP WRENCH M3-12



8 PCS DIE&HANDLE SET

Mateiral	HSS
Packing	Plastic box

The set including:

7DIES:M3X0.5,M4X0.7,M5X0.8,M6X1.0,M8X1.25M10X1.5,M12X1.75
 1 DIE WRENCH O/D25mm



TAPS AND DIES SET

24 PCS TAP&DIE SET

Mateiral	HSS
Packing	Plastic box

The set including:

11TAPS:M5X0.8,M5X0.9,M6X0.75,M6X1.0,M8X1.0,M8X1.25
M10X1.25.M10X1.5,M12X1.5,M12X1.75,1/8NPT2711DIES:SI
ZE AS TAPS
1 DIE WRENCH O/D25MM
1 TAP WRENCH M3-M12



40 PCS TAP&DIE SET

Mateiral	HSS
Packing	Plastic box

The set including:

17TAPS:M3X0.5,M3X0.6,M4X0.7,M4X0.75,M5X0.8,M5X0.9,M
6X0.75,M6X1.0,M7X0.75,M7X1.0,M8X1.0,M8X1.25,M10X1.5,
M10X1.25,M12X1.75,M12X1.5,1/8NPT2817DIES:SAIZES AS
TAPS
1 TAP WRENCH:M3-12
1 T TAP HANDLE:M3-6
1 DIE WRENCH:25MM O/D
1 SCREWDRIVER
1 SCREW PITCH GAUGE



31 PCS TAP&DIE SET

Mateiral	HSS
Packing	Plastic box

Metric size set including:

18TAPS:M1,M1.1,M1.2,M1.4,M1.6,M1.8,M2,M2.2,M2.5
9 DIES: SIZE AS TAPS
1PCS WRENCH
1PCS DIES LINING1PCS TAPS LINING

Inch size set including:

18TAPS:00-90,0-80,1-64,1-72,2-56,2-64,3-48,3-56,4-40
9 DIES: SIZE AS TAPS
1PCS WRENCH
1PCS DIES LINING
1PCS TAPS LINING



TAPS AND DIES SET

32 PCS TAP&DIE SET

Mateiral	HSS
Packing	Plastic box

The set including:

21TAPS:M3X0.5,M4X0.7,M5X0.8,M6X1.0M8X1.25M10X1.5,M12X1.75

7DIES:SAIZE AS TAPS

1 TAP WRENCH M3-M12 1 DIE WRENCH O/D25mm

1 SCREWDRIVER

1 SCREW PINCH GAUGE



44 PCS TAP&DIE SET

Mateiral	HSS
Packing	Plastic box

The set including:

21TAPS:M3X0.5,M4X0.7,M5X0.8,M6X1.0M8X1.25M10X1.5,M12X1.75

7DIES:SAIZE AS TAPS

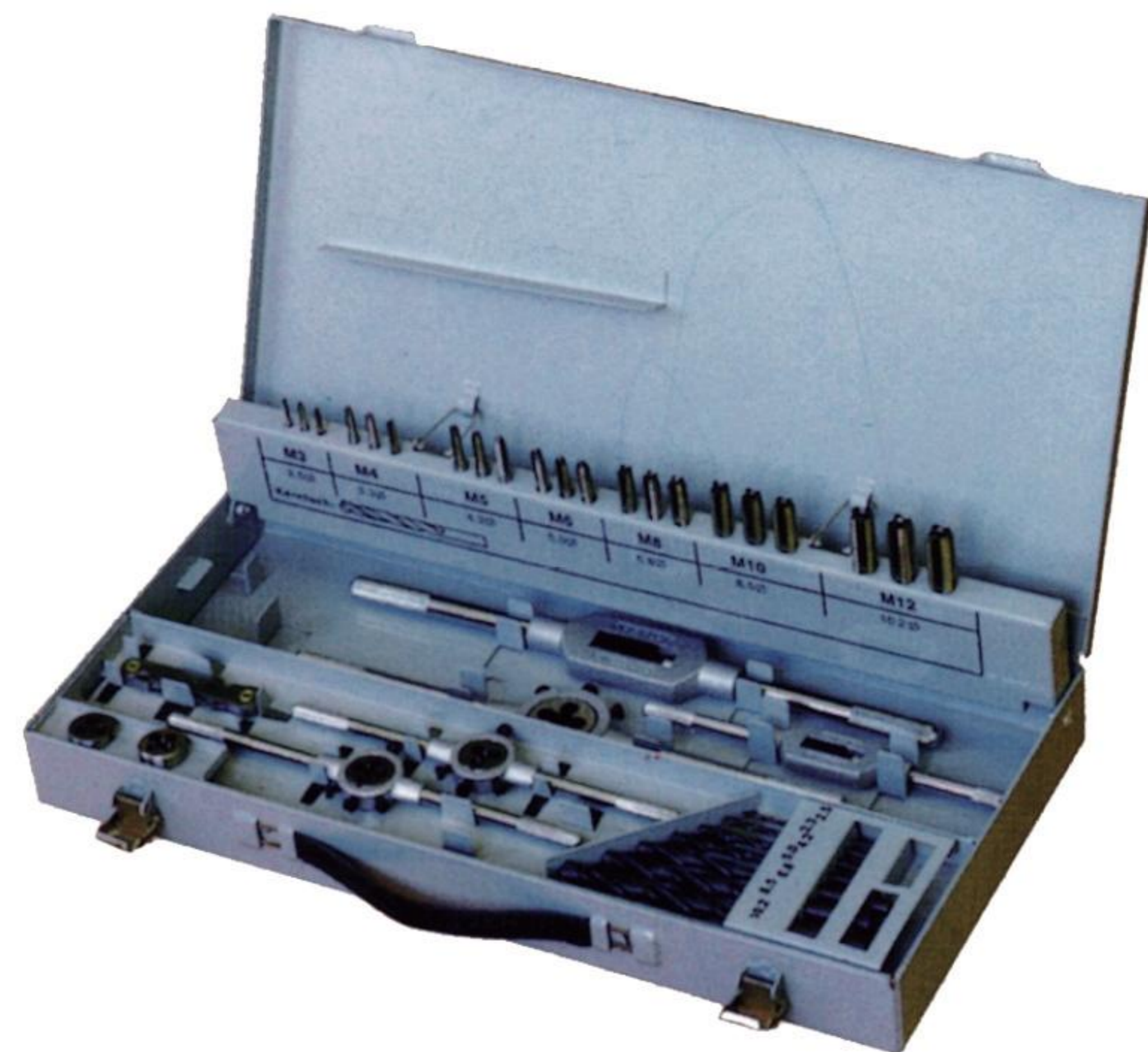
7PCS DRILLS:2.5,3.3, 4.2, 5, 6.8,8.5,10.2

2 PCS TAP WRENCH

5 PCS DIE STOCK

1 PCS SCREW DRIVER

1 PCS SCREW PINCH GAUGE



44 PCS TAP&DIE SET

Mateiral	HSS
Packing	Plastic box

The set including:

21TAPS:M3X0.5,M4X0.7,M5X0.8,M6X1.0M8X1.25M10X1.5,M12X1.75

7DIES:SAIZE AS TAPS

7PCS DRILLS:2.5,3.3, 4.2, 5, 6.8,8.5,10.2

2 PCS TAP WRENCH

5 PCS DIE STOCK

1 PCS SCREW DRIVER

1 PCS SCREW PINCH GAUGE



TAPS AND DIES SET

45 PCS TAP&DIE SET

Mateiral	HSS
Packing	Plastic box

The set including:

20taps:M6X0.75,M6x1.0,M8X1.0,M8x1.25,M10x1.25,M10X1.5,M12X1.5.M12x1.75,M14X1.5,M14X2.0,M16X1.5,M16X2.0,M18X1.5,M18X2.5,M20X1.5,M20X2.5,M22X1.5,M22X2.5-,M24X1.5,M24X3.0

20 dies:size as taps

1 tap wrench:M8-M25

1 T tapwrench:M3-M6

1 DIE wrench:50mm O/D

1 ADAPTER FOR DIE WRENCH:38MM O/D

1 SCREWDRIVER



60 PCS TAP&DIE SET

Mateiral	HSS
Packing	Plastic box

The set including:

27TAPS:M3X0.5,M4X0.7,M5X0.8,M6X1.0,M7X1.0,M8X1.25M9X1.25,M10X1.0,M10X1.5,M12X1.75,:4-40,6-32.8-32,10-32,10-24,12-24,1/4-20,1/4-28,5/16-185/16-24,3/8-16,3/8-24,7/16-14,7/16-20,1/2-131/2-20,1/8NPT27

27DIES:SAIZE AS TAPS

1 TAP WRENCH:M4-M12(3/16-1/2")

1 T TAP WRENCH(1/16-1/4")

1 DIE WRENCH:25MM(1")O/D

1 SCREWDRIVER

1 METRIC SCREW PITCH GAUGE

1 INCH SCREW PITCH GAUGE



110 PCS TAP&DIE SET

Mateiral	HSS
Packing	Plastic box

The set including:

35 TAPER TAPS:

M2x0.4,M3X0.5,M4X0.7,M5X0.8,M6X0.75,M6X1.0M7X0.75.M7X1.0.M8X0.75,M8X1.M8X1.25.M9X0.75.M9X1.0,M9X1.25,M10X0.75,M10X1.0,M10X1.25M10X1.5.M11X0.75.M11X1.0,M11X1.25,M11X1.5M12X0.75,M12X1.0,M12X1.25,M12X1.5,,M12X1.75.M14X1.0.M12X1.25.M12X1.5,M12X1.75,M14X1.0M14X1.25,M14X1.5,M14X2.0,M16X1.0,M16X1.5.M16X2.0.M18X1.5

35 PLUG TAPS:SAZES AS TAPER TAPS

35 DIES:SAZES AS TAPER TAPS

2 TAP WRENCH:M3-M12,M6-M20

2 DIE WRENCH:25mm,38 O/D

1 T TAP WRENCH:M3-M6



TAP EXTENSION CONNECTING ROD

TAP LENGTHEN



SIZE	Overall length	Art No.	SIZE	Overall length	Art No.
2.1	60±1.6	N10-1001	11	150±1.8	N10-1015
2.4	70±1.6	N10-1002	12	155±1.8	N10-1016
2.7	80±1.6	N10-1003	13	165±1.8	N10-1017
3	90±1.6	N10-1004	14.5	175±1.8	N10-1018
3.4	95±1.6	N10-1005	14	170±2.0	N10-1019
3.8	100±1.6	N10-1006	16	180±2.0	N10-1020
4.3	105±1.6	N10-1007	18	200±2.0	N10-1021
4.9	110±1.6	N10-1008	20	220±2.0	N10-1022
5.5	115±1.6	N10-1009	22	220±2.0	N10-1023
6.2	120±1.8	N10-1010	24	235±2.0	N10-1024
7	125±1.8	N10-1011	26	250±2.0	N10-1025
8	125±1.8	N10-1012	29	265±2.0	N10-1026
9	130±1.8	N10-1013	32	285±2.0	N10-1027
10	140±1.8	N10-1014			

SCREW EXTRACTOR

SCREW EXTRACTOR



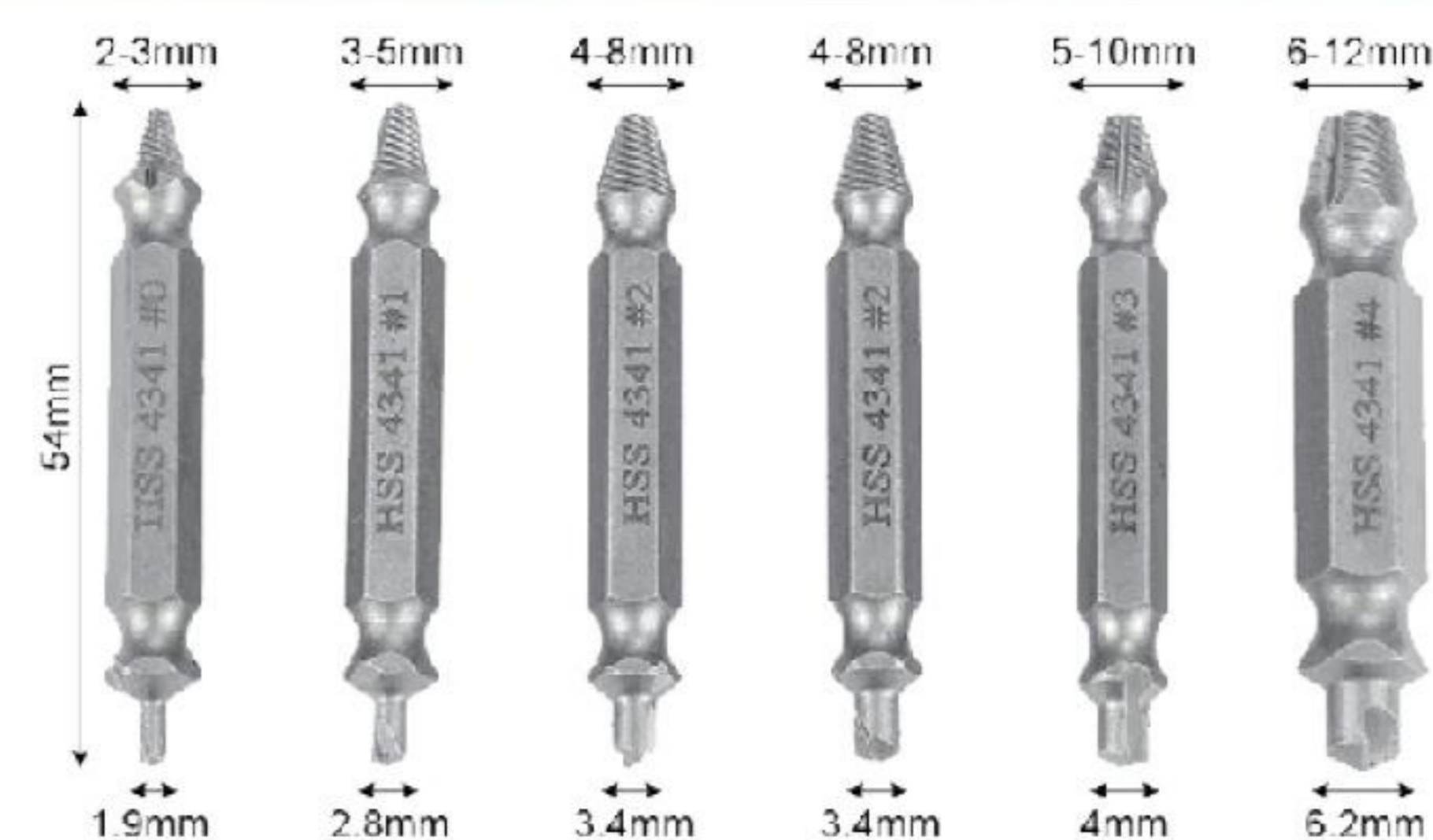
5 PCS SCREW EXTRACTOR SET



SIZE	Overall length	Art No.
1#	50.57±0.5	M10-1001
2#	57.71±0.5	M10-1002
3#	65.81±0.5	M10-1003
4#	77.06±0.5	M10-1004
5#	81.81±0.5	M10-1005
6#	90.29±0.5	M10-1006
7#	95.25±0.5	M10-1007
8#	100.7±0.5	M10-1008
9#	117.48±0.5	M10-1009
10#	127.5±0.5	M10-1010
11#	140±0.5	M10-1011
12#	158±0.5	M10-1012
5-1/4#	85.73±0.5	M10-1013
6-3/8#	95.25±0.5	M10-1014
7.5#	104.78±0.5	M10-1015

SIZE	Overall length
1#	50.57±0.5
2#	57.71±0.5
3#	65.81±0.5
4#	77.06±0.5
5#	81.81±0.5

HSS SCREW EXTRACTOR SET



SCREW EXTRACTOR

6 PCS SCREW EXTRACTOR SET



SIZE	Overall length
1#	50.57±0.5
2#	57.71±0.5
3#	65.81±0.5
4#	77.06±0.5
5#	81.81±0.5
6#	90.29±0.5

8 PCS SCREW EXTRACTOR SET



SIZE	Overall length
1#	50.57±0.5
2#	57.71±0.5
3#	65.81±0.5
4#	77.06±0.5
5#	81.81±0.5
6#	90.29±0.5
7#	95.25±0.5
8#	100.7±0.5

10 PCS SCREW EXTRACTOR SET



SIZE	Overall length	SIZE	Overall length
1#	50.57±0.5	φ2.3	53±2
2#	57.71±0.5	φ2.8	61±2
3#	65.81±0.5	φ4.2	75±2
4#	77.06±0.5	46.3	101±2
5#	81.81±0.5	47.0	109±2

11 PCS SCREW EXTRACTOR&DRILL BIT SET



SIZE	Overall length	SIZE	Overall length
1#	50.57±0.5	φ2.3	53±2
2#	57.71±0.5	φ2.8	61±2
3#	65.81±0.5	φ4.2	75±2
4#	77.06±0.5	φ6.3	101±2
5#	81.81±0.5	φ7.0	109±2

12 PCS SCREW EXTRACTOR&DRILL BIT SET



SIZE	Overall length	SIZE	Overall length
1#	50.57±0.5	φ2.3	53±2
2#	57.71±0.5	φ2.8	61±2
3#	65.81±0.5	φ4.2	75±2
4#	77.06±0.5	φ6.3	101±2
5#	81.81±0.5	φ7.0	109±2
6#	90.29±0.5	φ9.5	125±2

SCREW EXTRACTOR



SIZE	Overall length	Art No.
1#	59.69±0.5	M11-1001
2#	68.072±0.5	M11-1002
3#	76.2±0.5	M11-1003
4#	78.74±0.5	M11-1004
5#	85.598±0.5	M11-1005
6#	102.00±0.5	M11-1006
7#	118.0±0.5	M11-1007

SCREW EXTRACTOR

5 PCS SCREW EXTRACTOR SET



SIZE	Overall length
1#	59.69±0.5
2#	68.072±0.5
3#	76.2±0.5
4#	78.74±0.5
5#	85.598±0.5

6 PCS SCREW EXTRACTOR SET



SIZE	Overall length
1#	59.69±0.5
2#	68.072±0.5
3#	76.2±0.5
4#	78.74±0.5
5#	85.598±0.5
6#	102.00±0.5

7 PCS SCREW EXTRACTOR SET



SIZE	Overall length
1#	59.69±0.5
2#	68.072±0.5
3#	76.2±0.5
4#	78.74±0.5
5#	85.598±0.5
6#	102.00±0.5
7#	118.0±0.5

SCREW EXTRACTOR



SIZE	Overall length	Art No.
1#	50	M12-1001
2#	65	M12-1002
3#	75	M12-1003
4#	80	M12-1004
5#	85	M12-1005

SCREW EXTRACTOR



SIZE	Overall length	Art No.
1#	38.1	M13-1001
2#	38.1	M13-1002
3#	38.1	M13-1003
4#	38.1	M13-1004
5#	38.1	M13-1005
6#	38.1	M13-1006
7#	38.1	M13-1007
8#	38.1	M13-1008
9#	38.1	M13-1009
10#	38.1	M13-1010

SCREW EXTRACTOR



SIZE	Overall length	Art No.
4	95.25±0.5	M14-1001
6	100.7±0.5	M14-1002
1	117.48±0.5	M14-1003
1-1/4	127.5±0.5	M14-1004
1-1/2	140±0.5	M14-1005
2	158±0.5	M14-1006
7#	38.1	M13-1007
8#	38.1	M13-1008
9#	38.1	M13-1009
10#	38.1	M13-1010

SCREW EXTRACTOR



SIZE	Overall length	Art No.
7-7	132	M15-1001
7-8	145	M15-1002
8-9	148	M15-1003

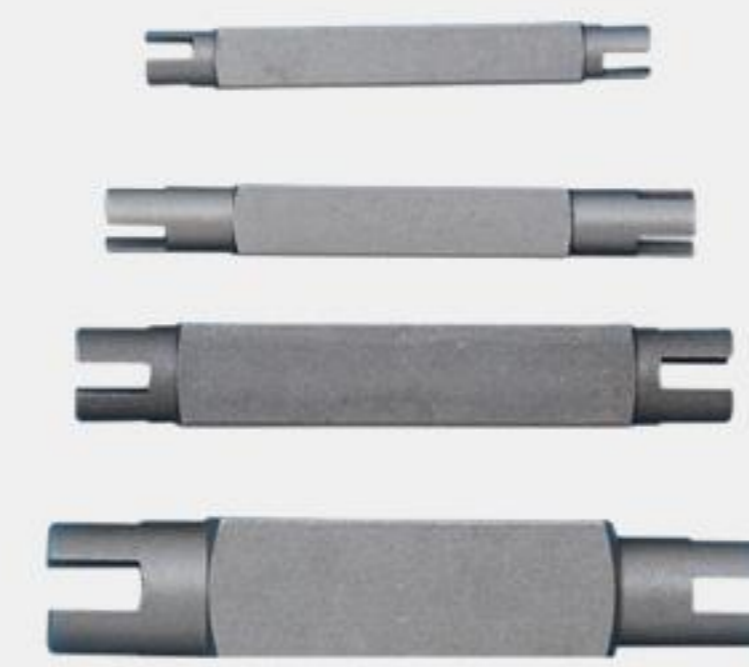
TAP EXTRACTOR

TAP EXTRACTOR



SIZE	Overall length	Art No.
0#	50	M16-1001
1#	53.5	M16-1002
2#	58	M16-1003
3#	60.5	M16-1004
4#	60	M16-1005
5#	70	M16-1006
6#	70	M16-1007
7#	78.5	M16-1008
8#	78	M16-1009
9#	85	M16-1010
10#	85.5	M16-1011
11#	90	M16-1012
12#	95	M16-1013
13#	100	M16-1014

TAP EXTRACTOR



SIZE	Overall length	Art No.
0#	45	M17-1001
1#	45	M17-1002
2#	45	M17-1003
3#	60	M17-1004
4#	60	M17-1005
5#	70	M17-1006
6#	70	M17-1007
7#	78	M17-1008
8#	78	M17-1009
9#	85	M17-1010
10#	85	M17-1011

TAP EXTRACTOR



SIZE	Overall length	Art No.
0#	45	M18-1001
1#	45	M18-1002
2#	45	M18-1003
3#	45	M18-1004
4#	45	M18-1005
5#	55	M18-1006
6#	55	M18-1007
7#	55	M18-1008
8#	65	M18-1009
9#	65	M18-1010
10#	65	M18-1011

10 PCS TAP EXTRACTOR SET



SIZE	Overall length
1#	53.5
2#	58
3#	60.5
4#	60
5#	70
6#	70
7#	78.5
8#	78
9#	85
10#	85.5

5 PCS TAP EXTRACTOR SET



SIZE	Overall length
2#	58
3#	60.5
4#	60
5#	70
6#	70

6 PCS TAP EXTRACTOR SET



SIZE	Overall length
1#	53.5
2#	58
3#	60.5
4#	60
5#	70
6#	70